



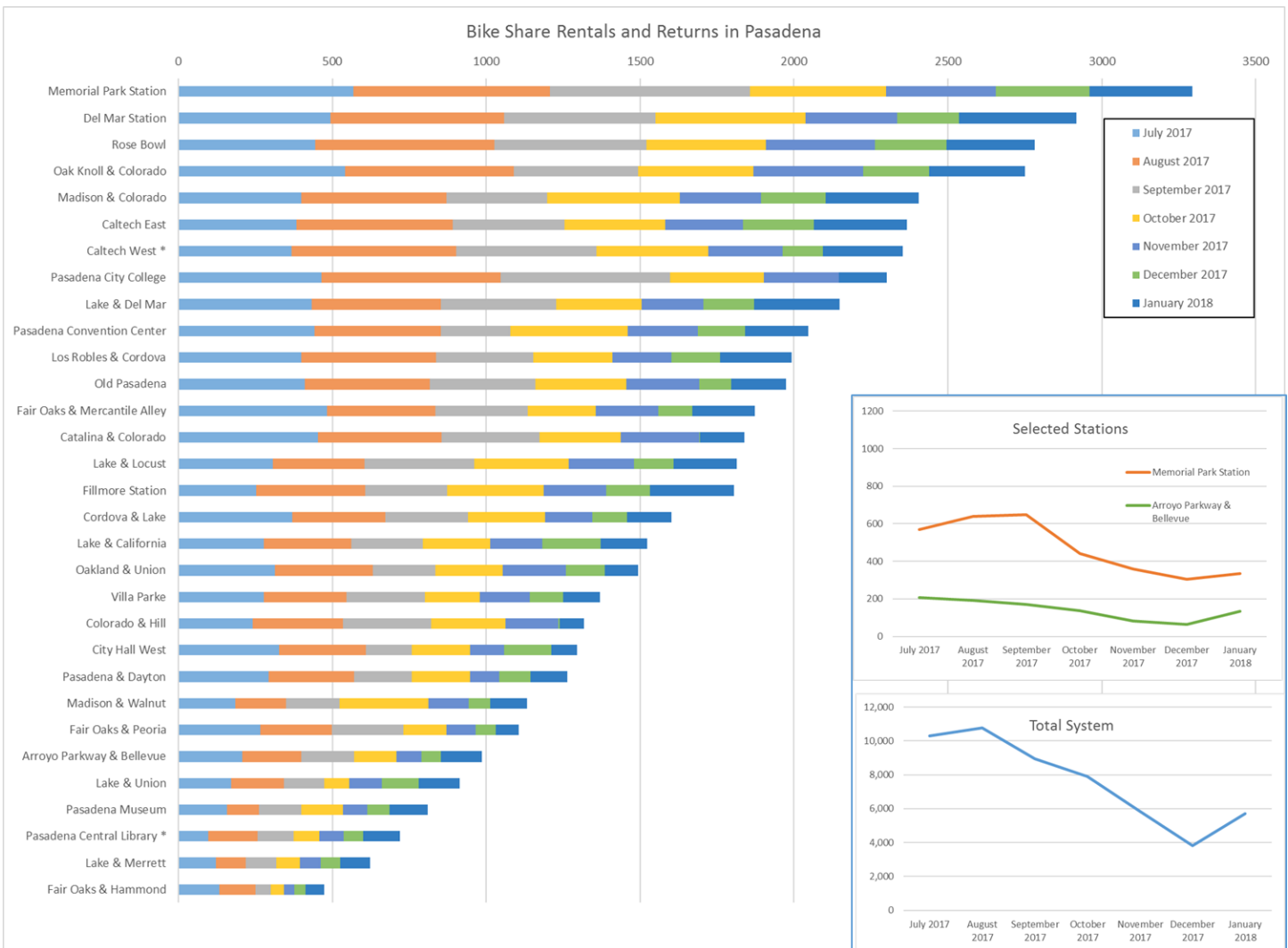
REGULAR MEETING TRANSPORTATION ADVISORY COMMISSION

Thursday March 22, 2018
4:00 P.M.

Staff Update on Various Issues

Pasadena Bike Share

Staff presented the second quarterly update to the Municipal Services Committee. Usage by station is shown in the chart below



Staff is working on a Maintenance Agreement to install the Allen Avenue Bike Share station on Caltrans right-of-way. Staff has reached out to Metro to discuss the relocation of low performing stations.

Union Cycle Track Project

The contract with DKS Associates is complete and subconsultant Toole Design has developed an Outreach Program. Outreach efforts will begin in May.

Cordova Street Road Diet Project

Caltrans has approved the environmental documents for the project and released the authorization to proceed with design. Staff has submitted a grant application for SB1 funds to expand the number of curb extensions proposed to receive green streets stormwater elements. Notification of the grant awards is expected this year, at which time the design will be finalized and advertised for construction.

Orange Grove Reconstruction

Public meeting scheduled for March 22, 2018 at 6:30 PM to take comments on the section of the roadway from Lake Avenue to Sierra Madre Blvd.

North Fair Oaks Complete Streets Working Group

Initial meeting held with the Working Group. Consultant will be retained by end of April to study traffic options.

Mountain Street Complete Streets Program

Initial meeting held with working group to discuss issues and concepts. Consultant retained to prepare conceptual layouts.

Allen Avenue Complete Streets Project

Consultant has initiated work on the project. Initial meeting with working group to discuss issues and concepts scheduled for April 24, 2018 at 6:00 PM. The limits of the project are from Colorado Blvd. to Villa St.

Bike Week

C.I.C.L.E. retained to coordinate activities for Bike Week 2018

Transit to Trails Program

LA County committed funding for four of the six months of service on the Pasadena Transit Route 88 demonstration route that will operate from the Memorial Park Gold Line Station to Sam Merrill Trail in Altadena. Other funds to operate Route 88 are coming from the City's transit budget and from the Trust for Public Land per an Edison International grant. A launch event at Memorial Park is scheduled for 9:00 am on April 7, 2018.

Sunday Service on Pasadena Transit

A federal grant award is funding three years of Sunday service on Pasadena Transit beginning in FY2019. This is the first time the City's fixed route system has been able to provide Sunday service since the recession-driven service cuts in 2010.

Enhanced BusFinders

In addition to Pasadena Transit real-time bus arrival information, Metro's real-time bus information is now also available on BusFinders located at numerous bus stops throughout the City. BusFinders are interactive displays affixed onto bus stop posts at approximately 80 stops in the City, many of which are shared service stops between Pasadena Transit and Metro.

Measure M

Consultant selection is underway by the Arroyo Verdugo Subregion to start the programming process for access to the first five years of subregional funds.

Data Analytics

An annual subscription to Streetlight Data has been procured. The subscription provides for big data transportation analytics that will be used to better understand travel patterns. <https://www.streetlightdata.com/>

Some popular uses of Street Light data software:

- Travel demand Modeling (comprehensive O-D matrices)
- Long Term Planning (Study regional patterns and engage with the public)
- Travel Demand Management (Scan for high-potential opportunities)
- Performance Measurement (Evaluate AADT, travel time reliability)
- Congestion Studies (Identify the cause of congestion)
- Project Evaluations (Conduct before and after studies)

Complete Streets Blueprint

Staff has developed a Draft Request for Proposal for a consultant to develop a five-year program for Complete Streets projects to integrate with Public Works Pavement Management Program. Project will include substantial outreach component.