

FIXTURE OR APPLIANCE	REMARKS.	SPECIFICATIONS
(E) ① CASH REGISTER/FRONT COUNTER	34" H. MAX D/A CODE.	ALL WASHABLE MATERIAL
(N) ② 48" DRY CASE, COOKIE DISPLAY.	OVER THE COUNTER	
(N) ③ 48" REFRIGERATOR CASE, SALAD/PASTRY DISPLAY.	SELF CONTAIN.	15 AMP. 115 V.
(N) ④ COFFEE ESPRESSO MACHINE		15 AMP. 115 V.
(N) ⑤ 48" REFRIGERATOR CASE, WORK TOP (SODA TAP)	SELF CONTAIN.	15 AMP. 115 V.
(E) ⑥ 15" HAND SINK, STAINLESS STEEL.	DIRECT WASTE.	W/ 8" SPLASH GUARDS
(N) ⑦ COFFEE MAKER		15 AMP. 115 V.
(N) ⑧ BLENDER		15 AMP. 115 V.
(N) ⑨ COFFEE GRINDER		15 AMP. 115 V.
(E) ⑩ CONVECTION OVEN		15 AMP. 115 V.
(E) ⑪ CREPE MAKER FLAT TOP	ELECTRIC.	15 AMP. 115 V.
(E) ⑫ UNDER COUNTER FREEZER	ELECTRIC	15 AMP. 115 V.
(E) ⑬ 36" REFRIGERATOR CASE, SANDWICH TABLE.	SELF CONTAIN.	15 AMP. 115 V.
(E) ⑭ PANINI PRESS	ELECTRIC.	30 AMP. 115 V.
(N) ⑮ ICE MAKER	INDIRECT WASTE	15 AMP. 115 V.
(E) ⑯ 24" WORKING TABLE STAINLESS STEEL W/LEGS	FREE STANDING	
(E) ⑰ 42" PREP SINK, STAINLESS STEEL.	INDIRECT WASTE.	W/ DRAIN BOARD 2 SIDES.
(E) ⑱ 90" 3 COMP. SINK, S/S W/DUAL 18" DRAIN BOARDS.	DIRECT WASTE.	18"X 18" BOLLS (3 X)
(N) ⑲ 24" 1 DOOR FREEZER	SELF CONTAIN.	15 AMP. 115 V.
(E) ⑳ 12" EMPLOYEE LOCKER (FREE STANDING)	5 DOORS.	PAINTED STEEL.
(E) ㉑ 18"/24" DEEP DRY FOOD STORAGE SHELVES	WIRE CHROME FINISHED	6" MIN. ABOVE THE FLOOR
(E) ㉒ 22" MOP SINK, STAINLESS STEEL. (W/ BACK FLOW D.)	DIRECT WASTE.	W/ 18" SPLASH GUARD
(E) ㉓ WALL MOUNT WRACK FOR MOP AND BROOMS.	WIRE CHROME FINISHED	
(E) ㉔ OVERHEAD S/S SHELF FOR MOP UTENSILS		
(E) ㉕ 36" AIR CURTAIN	DOOR ACTIVATED	10 AMP. 115 V.
(N) ㉖ DEEP FRYER	ELECTRIC.	30 AMP. 115 V.
(N) ㉗ 36" FLAT TOP GRILL.	ELECTRIC	30 AMP. 115 V.
(N) ㉘ 2 X COOK TOP	ELECTRIC.	30 AMP. 115 V.

(E) W/H WATER HEATER INDOOR 50 GALLONS 9 KW ELECTRIC 20 AMP. 240 V.
(N) HOOD 4'-0" W. HOOD VENT LESS. SEE CUT SHEET ATTACHED FOR SPECIFICATIONS.

FINISH SCHEDULE				
ROOMS AREAS	FLOORS	BASE	WALLS	CEILINGS
FOOD SERVICE AREA KITCHEN DRY FOOD STORAGE WASHING, MOP SINK SERVING AREAS.	CORY TILE	CORY TILE WITH 3/8" MIN. RED. UP 6" HIGH	S/S AT HOOD AREA SMOOTH WASHABLE S.GLOSS ENAMEL	SMOOTH WASHABLE ACOUSTIC TILE LIGHT IN COLOR
RESTROOM	CERAMIC TILE	CERAMIC TILE WITH 3/8" MIN. RED. UP 6" HIGH	SMOOTH WASHABLE S.GLOSS ENAMEL LIGHT IN COLOR	SMOOTH WASHABLE S.GLOSS ENAMEL LIGHT IN COLOR
WALK-IN REFRIGERATOR	CORY TILE	CORY TILE WITH 3/8" MIN. RED. UP 6" HIGH	PRE-FABRICATED GALVANIZE METAL.	PRE-FABRICATED GALVANIZE METAL.

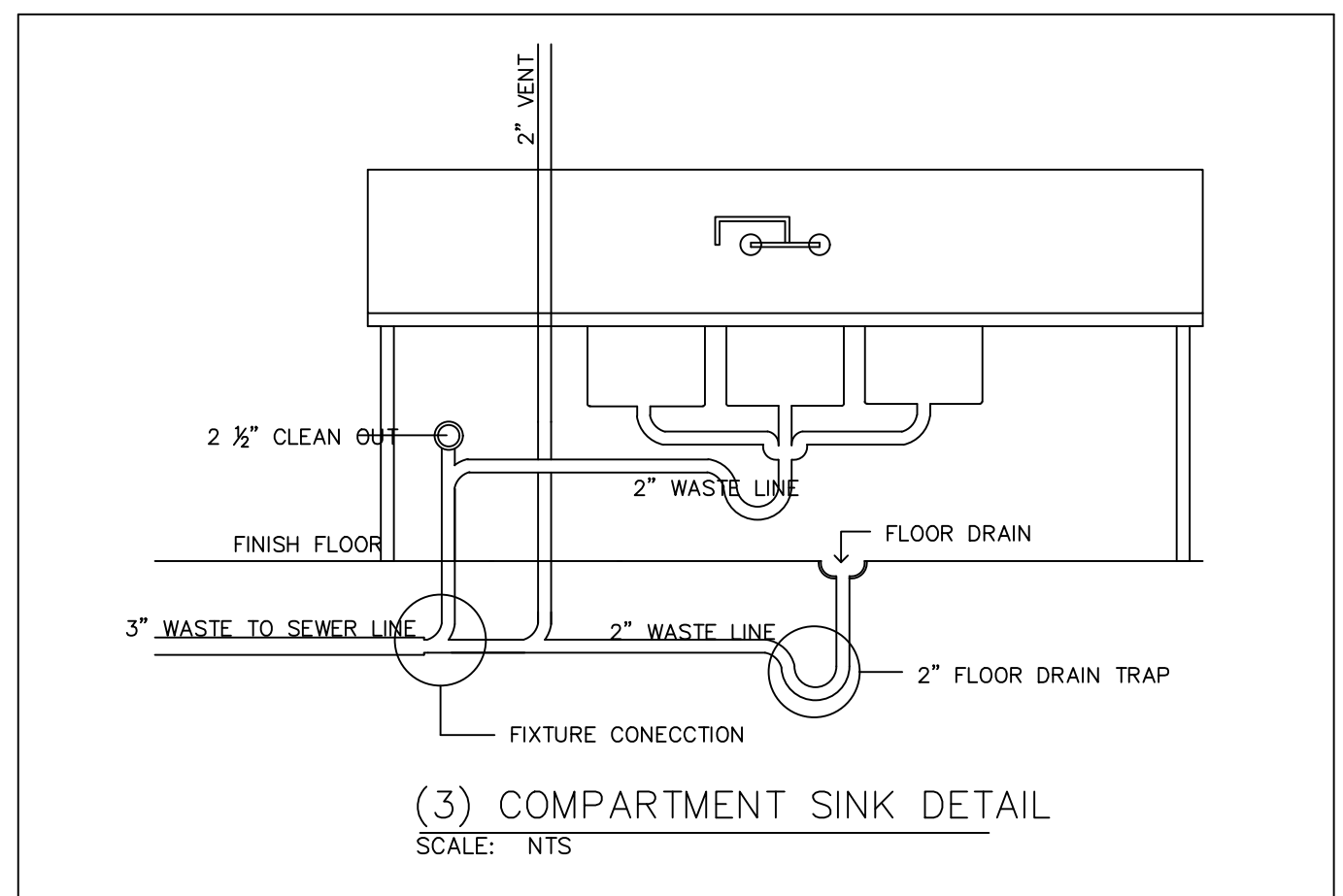
INTERIOR FINISHES:

- INTERIOR FINISH MATERIALS APPLIED TO WALL AND CEILINGS SHALL BE TESTED AS SPECIFIED IN SECTION 803.
- ALL CABINETS, COUNTERS AT FRONT SERVING AREA TO BE MADE OF WASHABLE LAMINATED MATERIAL IN LIGHT COLOR FINISH. (TYPICAL)
- ALL INTERIOR WALLS IN THE (CORRIDORS, LOBBY AND EXIT ENCLOSURES ARE GYP. BOARD (TYP.) PAINTED (NO WOOD OR OTHER FLAMBLE MATERIALS IS BEING USED)

PLUMBING SYMBOLS	ELECTRICAL SYMBOLS AND NOTES:
●+ COLD WATER	FAN
●+ HOT WATER	⊙ LIGHT SWITCH ACTIVE WITH VENTILATION FAN
●= DIRECT WASTE	⊕ LIGHT FIXTURE
⊖ DIRECT WASTE FLOOR MOUNTED	IN EVERY ROOM AND AREA IN WHICH FOOD IS PREPARED, OR IN WHICH UTENSILS ARE CLEANED, LIGHTING SHALL BE PROVIDED TO PRODUCE AN INTENSITY OF NOT LESS THAN 20 FOOTCANDLES AS MEASURED 30" ABOVE THE FLOOR. FOOD AND UTENSIL STORAGE ROOMS, REFRIGERATION STORAGE, TOILET AND DRESSING ROOMS SHALL BE PROVIDED WITH AT LEAST 10 FOOTCANDLES OF LIGHT. THE LIGHT FIXTURES IN THOSE AREAS SHALL BE OF SHATTERPROOF CONSTRUCTION OR SHALL BE PROTECTED WITH SHATTERPROOF SHIELDS AND SHALL BE READILY CLEANABLE.
⊕ GAS LINE	
⊗ FLOOR SINK	
⊗ FLOOR SINK W/ HALF GRATE	
⊙ FLOOR DRAIN	
— WASTE LINE	
— MAIN WASTE LINE	

ADDITIONAL NOTES:

- PROVIDE SINGLE SERVICE SOAP AND TOWEL DISPENSER FOR HAND SINK.
- ALL EXTERIOR WINDOWS SHALL BE FIXED WITH NO OPTION TO OPEN OR CLOSE.

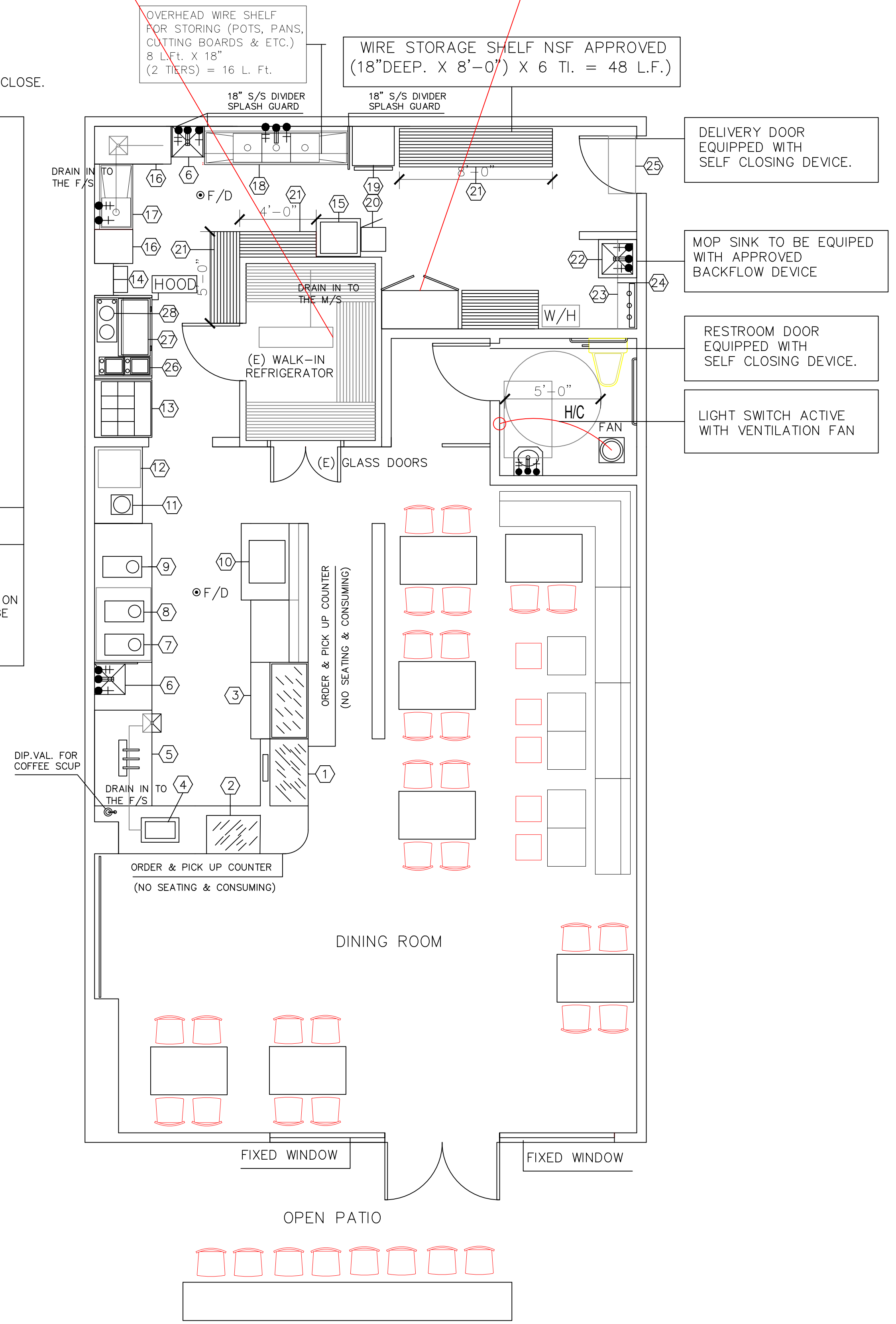


NOTE:

- UNIFORM PLUMBING CODE 704.3
THREE COMPARTMENT SINK SHALL BE CONNECTED DIRECTLY TO THE DRAINAGE SYSTEM. THE FLOOR DRAIN ADJACENT TO THE FIXTURE SHALL BE CONNECTED ON THE EWER SIDE OF THE FLOOR DRAIN TRAP, PROVIDED THAT NO OTHER DRAINAGE LINE IS CONNECTED BETWEEN THE FLOOR DRAIN WASTE CONNECTION AND THE FIXTURE DRAIN. THE FIXTURE AND FLOOR DRAIN REQUIRED ALL BE TRAP BY THIS CODE.

AREA TO STORE WINE AND BEER (WALK IN REFRIGERATOR)

AREA TO STORE WINE AND BEER (ENCLOSED LOCKED CABINET)



PROPERTY LINE SIDE WALK

EXISTING & NEW FLOOR PLAN
SCALE: 1/4" = 1'-0"

SIPAN
ARCHITECTURAL
DESIGN &
CONSULTING

TEL. 818.590.4800
E-MAIL: sipandesign@abcglobal.net
705 BALBOA AVE.
GLENDALE CA, 91206

DRAWINGS BY:
RAFI NAZARYAN
(818) 378-1000

REPUBLIC CAFE
854 E. GREEN ST. PASADENA CA. 91101

PROJECT:

REVISIONS:
DATE

DATE: 01.20.20

EXISTING & PROPOSED FLOOR PLAN

SHEET:
FS-1