



Pasadena Water and Power

# Northwest Commission Electrification Update

October 10, 2023





# Why Electrify?

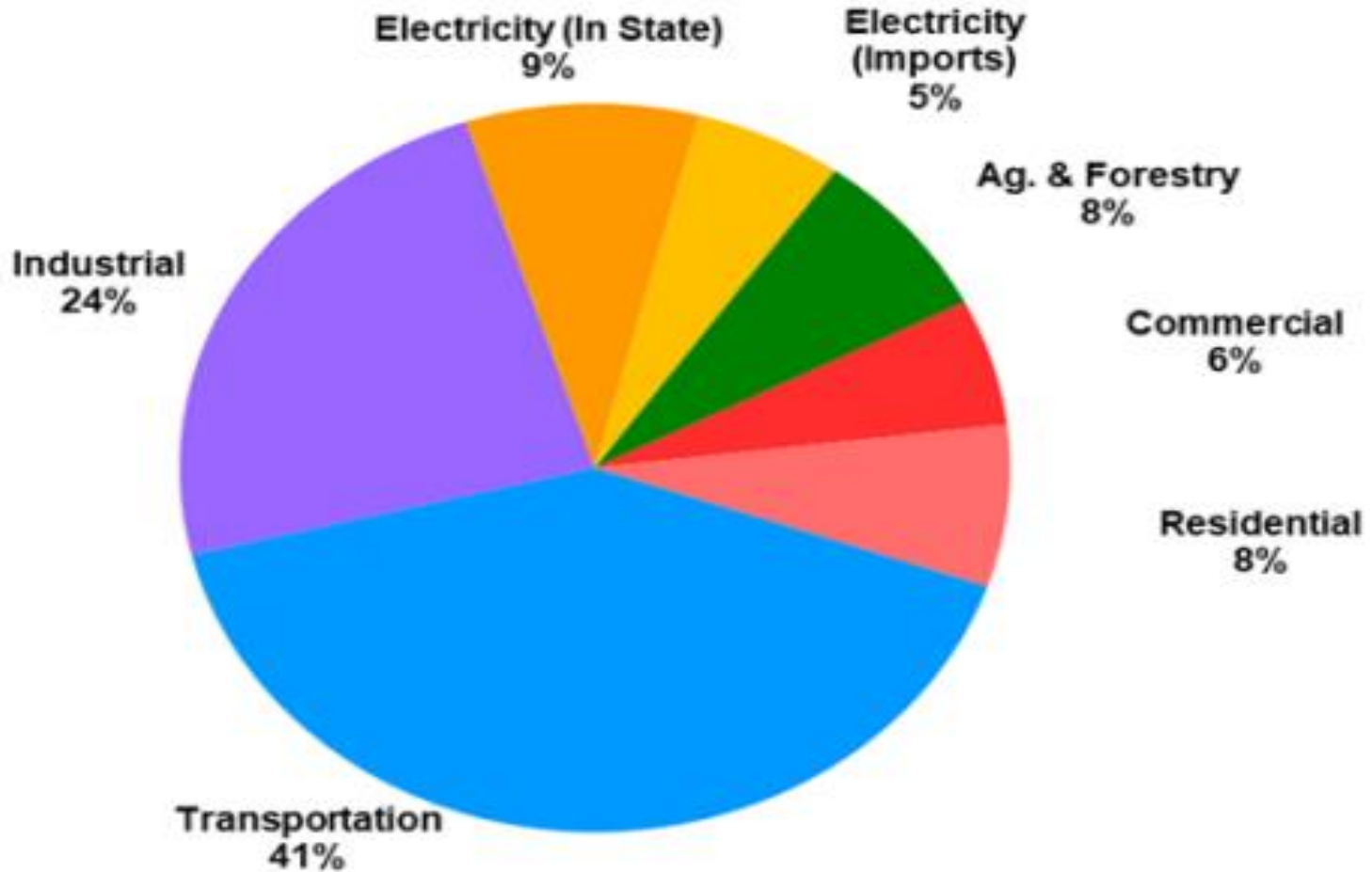
Pasadena Water and Power

- The transportation sector generates the largest share of greenhouse gas emissions.
- A typical passenger vehicle emits 4.6 metric tons of carbon dioxide per year.
- Electric vehicles are a green alternative.
- PWP electric vehicle charging stations are not built with ratepayer funds, but state programs that are designed to reduce GHG emissions.
- Transportation electrification can reduce the overall rate of electricity.



# GHG Emissions by Sector

Pasadena Water and Power





# Types of EV Chargers

Pasadena Water and Power

## Quick Overview of the EV Charging Landscape and Terms

### Level 1 Charging

110v  
~ 1.3 kW



### Level 2 Charging

220v  
~ 3.3 – 6.6 kW



### DC Quick Charging

440v  
~ 50 kW





# City EV Charging Station Projects

Pasadena Water and Power

Project	Chargers	Status
City Yards	2 DCFC, 43 L2	Complete
Marengo Garage	44 DCFC*	Complete
Holly Garage	52 L2	Complete
Arroyo Parkway	26 DCFC*	Complete
Del Mar Garage	2 DCFC, 37 L2	Final Permit
Playhouse Park (Phase I)	4 L2	Complete
Robinson Park	5 DCFC, 20 L2	Construction
Victory Park	2 DCFC, 23 L2	Construction
Playhouse Park(Phase II)	20 L2	EECBG app

\* DCFC count includes Tesla Superchargers

PASADENA



# City EV Charging Station Projects

Pasadena Water and Power

Project	Chargers	Status
Fire Station #33	2 L2	Complete
Fire Station #32	6 L2	Complete
Police Heliport	4 L2	Permitting
Fire Station #34	3 L2	Complete
Shopper's Lane	20 DCFC*	Opening soon
Marengo Garage L2	16 L2	In Permitting
Avon Ramp	40 DCFC*	In Design
Rose Bowl (Phase I)	12 DCFC, 24 L2	In Design

\* DCFC count includes Tesla Superchargers

PASADENA

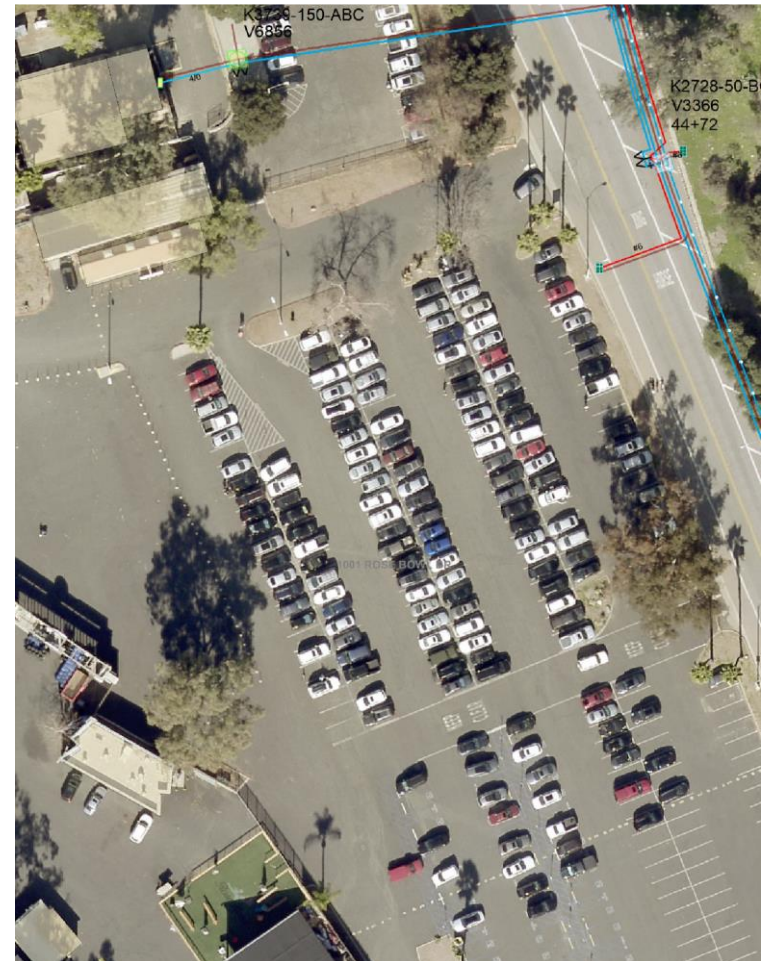




# Rose Bowl Design

Pasadena Water and Power

- Phase I (Lot D)
- 12 DCFC
- 24 Load-Managed Level 2 chargers
- South end of Brookside Golf Course Parking Lot
- Phase II (Lot I)
- 3-5 years IOC Design 2028

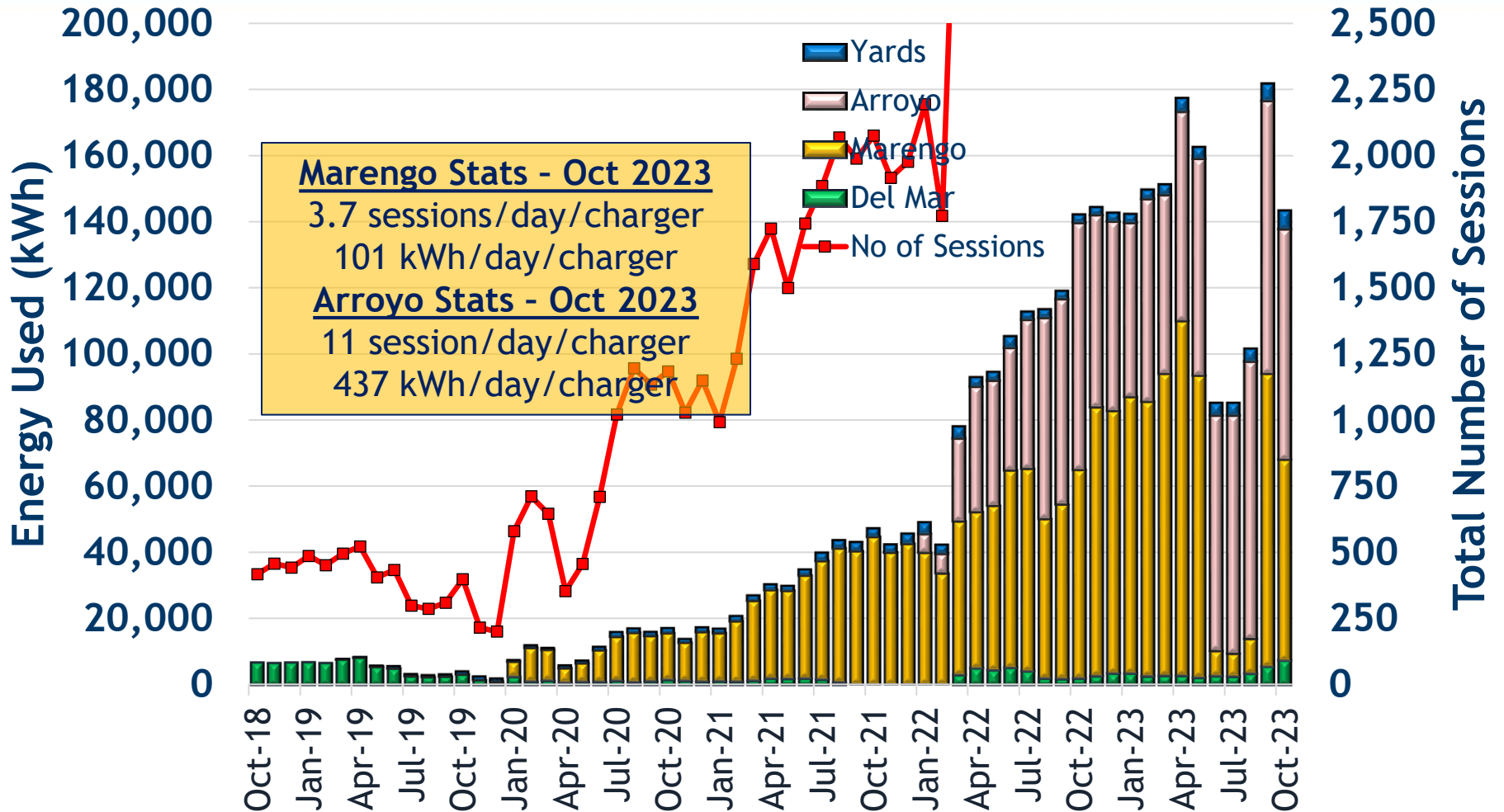






# PWP Owned Charging Stations (Units serviced by Greenlots)

Pasadena Water and Power





# Commercial Rebate Program

Pasadena Water and Power

- \$3,000 rebate per charger (max \$75,000)
- Level 2 WIFI or internet connected chargers are required
- All sites must be properly permitted
- Turning over LCFS incremental credits is also a requirement of the program
- Workplace charging and multi-family locations are desired for this program
- Lincoln Properties (9 L2 EVs)



# Residential Rebate Program

Pasadena Water and Power

- \$250 Rebate for purchase of an EV, \$250 bonus is EV is purchased in Pasadena, \$1,000 bonus for residents participating in low-income programs with PWP
- \$600 Rebate for an installed Level 2 charger that is WIFI-enabled, must be properly permitted
- \$1,000 Rebate for electric panel upgrade (must include new EV charger or Heat-pump install)



# E-Bike Rebate Pilot Details

Pasadena Water and Power

- **Fully Subscribed**
  - > Recommendations to MSC will be presented by the end of the year
- **E-Bike Rebate Amounts (up to \$1,000):**
  - > New Standard E-Bike: \$500
  - > Low-Income Bonus: \$250
  - > New E-Cargo or Adaptive E-bike Bonus: \$250
- **Max 2 E-bike Rebates/PWP res. electric acct.**
- **Utilize PWP's online rebate portal**



# New Ideas for Equitable Charging

Pasadena Water and Power

- Current rates are \$0.15kWh, \$0.20kWh (peak 4-9pm)
- Subscription program for low-income customers and TNC drivers \*\*keep rates at or below residential rates\*\*
- New grants from Housing CDBG for additional costs for residential EV charger installations including panel upgrades
- Collaborations with PUSD for community charging in school parking lots (Madison Elementary scheduled for site-visit)



# Questions???

Pasadena Water and Power

- <https://pwp.cityofpasadena.net/ev>