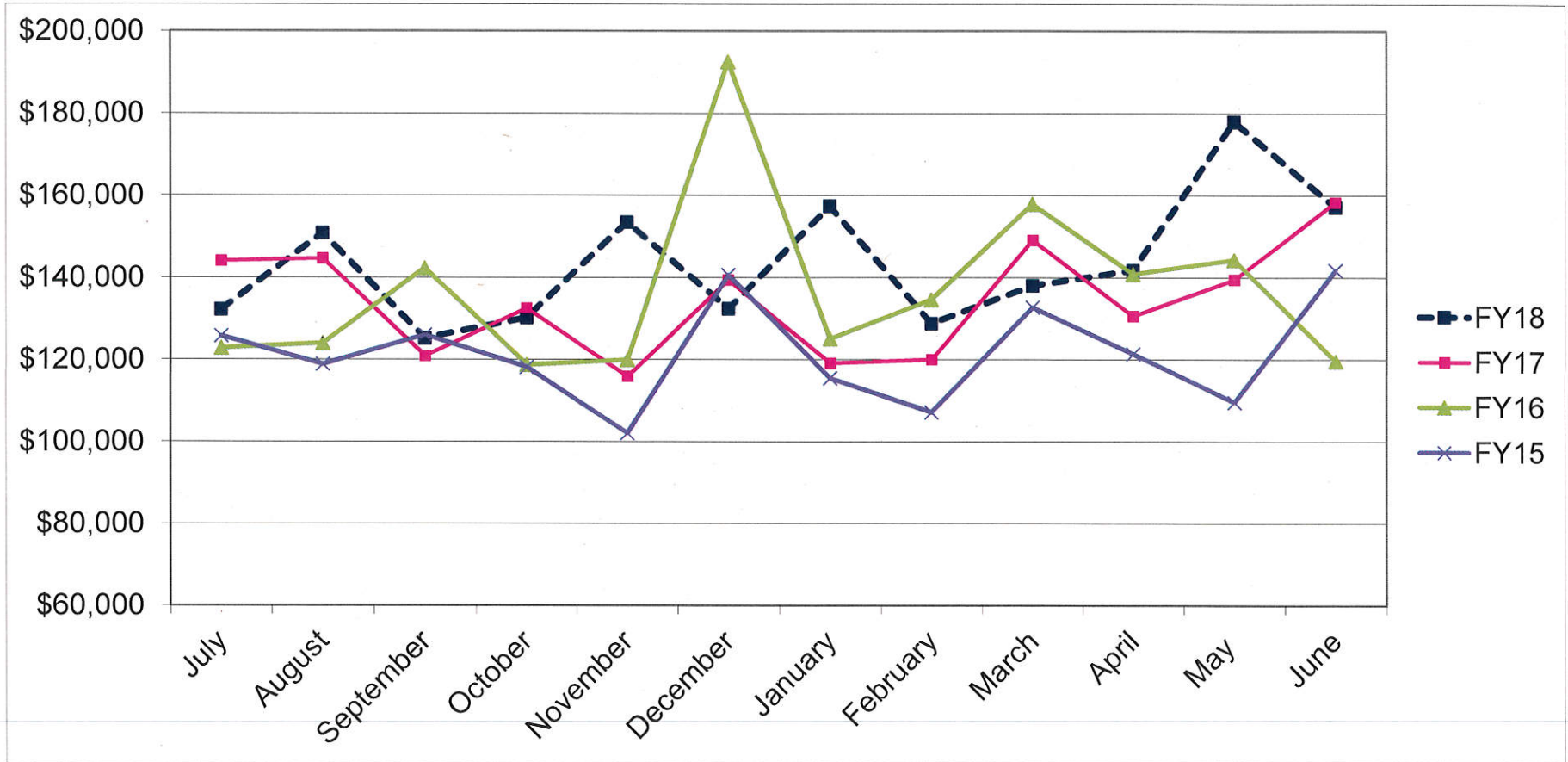


**Item VI-B**

OPPMZAC - July 19, 2018  
(Attachment B)

**Old Pasadena Meter District Revenue**



\*Revenue amounts may differ from fund sheet as this chart reflects credit card revenue that may not yet be posted to the fund sheet/financial system.

	July	August	September	October	November	December	January	February	March	April	May	June	Year to Date
FY18	\$132,152	\$150,816	\$125,226	\$130,173	\$153,446	\$132,396	\$157,388	\$128,781	\$138,038	\$141,744	\$177,945	\$157,161	\$1,725,265
FY17	\$144,034	\$144,635	\$120,853	\$132,549	\$115,881	\$139,375	\$119,134	\$119,978	\$149,095	\$130,602	\$139,511	\$158,345	\$1,613,993
FY16	\$122,724	\$123,947	\$142,246	\$118,657	\$119,867	\$192,512	\$124,999	\$134,586	\$157,875	\$140,802	\$144,249	\$119,504	\$1,641,967
FY15	\$125,713	\$118,853	\$125,997	\$118,152	\$102,042	\$140,575	\$115,437	\$107,135	\$132,720	\$121,347	\$109,555	\$141,754	\$1,459,280
Variance	-8.25%	4.27%	3.62%	-1.79%	32.42%	-5.01%	32.11%	7.34%	-7.42%	8.53%	27.55%	-0.75%	6.89%