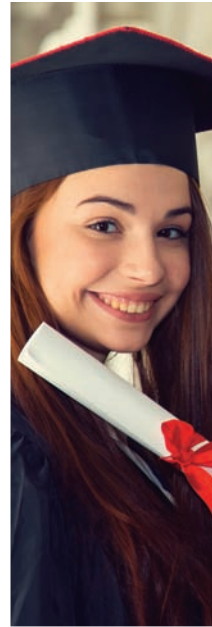


# CAPITAL PROJECT FUNDS





## NON-MAJOR GOVERNMENTAL FUNDS

### CAPITAL PROJECTS FUNDS

Capital projects funds are used to account for the acquisition or construction of major capital facilities by the City, other than those financed by proprietary funds.

Charter Capital Projects Fund - to account for certain resources identified by the City Council for the acquisition, construction, replacement or repair of municipal improvements where disbursements other than specific municipal improvement projects can be authorized only by a vote of the people.

New Development Impact Fund - to account for fees received from developers of commercial and industrial facilities to be used to fund capital projects, which are made necessary in whole or in part by new development.

Residential Development Impact Fund - to account for fees received from developers of residential facilities to be used to develop park or recreational facilities.

10% Green Fee Capital Projects Fund - to account for capital improvements related to the development of the Arroyo Seco. Funding comes from 10% of the gross receipts generated from green fees at the Brookside Golf Course, which are submitted to the capital project fund.

Capital Public Art Fund – to account for fees collected to be used for public art projects.

Traffic Reduction and Transportation Improvement Fee Fund – to account for fees assessed on new fee for new industrial, office, retail, and residential development, to insure that the transportation improvements identified in the Mobility Element necessary to address the impact of new development on the City’s transportation system are equitably shared by all new development.

**Combining Balance Sheet  
Non-Major Governmental Funds  
Capital Projects Funds  
June 30, 2020**

	Charter Capital Projects	New Development Impact	Residential Development Impact	10% Green Fee Capital Projects
<b>Assets:</b>				
Cash and investments	\$ 2,048,226	268,287	25,092,951	84,052
Accounts receivable	13,367	2,676	119,806	654
<b>Total assets</b>	<u>\$ 2,061,593</u>	<u>270,963</u>	<u>25,212,757</u>	<u>84,706</u>
<b>Fund balances:</b>				
Restricted	2,061,593	-	-	-
Committed	-	270,963	25,212,757	84,706
<b>Total fund balances</b>	<u>2,061,593</u>	<u>270,963</u>	<u>25,212,757</u>	<u>84,706</u>
<b>Total liabilities and fund balances</b>	<u>\$ 2,061,593</u>	<u>270,963</u>	<u>25,212,757</u>	<u>84,706</u>



Capital Public Art	Traffic Reduction Transportation Improvement	Total
1,041,061	5,381,547	\$ 33,916,124
4,574	17,840	158,917
<u>1,045,635</u>	<u>5,399,387</u>	<u>\$ 34,075,041</u>
-	-	2,061,593
<u>1,045,635</u>	<u>5,399,387</u>	<u>32,013,448</u>
<u>1,045,635</u>	<u>5,399,387</u>	<u>34,075,041</u>
<u>1,045,635</u>	<u>5,399,387</u>	<u>\$ 34,075,041</u>

**Combining Statement of Revenues, Expenditures and Changes in Fund Balances**  
**Non-Major Governmental Funds**  
**Capital Projects Funds**  
**For the Fiscal Year Ended June 30, 2020**

	Charter Capital Projects	New Development Impact	Residential Development Impact	10% Green Fee Capital Projects
<b>Revenues:</b>				
Charges for services	\$ -	-	-	-
Investment earnings	77,509	6,883	632,131	2,156
Miscellaneous revenues	-	-	-	-
Contributions	-	-	7,426,124	-
<b>Total revenues</b>	<u>77,509</u>	<u>6,883</u>	<u>8,058,255</u>	<u>2,156</u>
<b>Other financing sources (uses):</b>				
Transfers out	-	-	(5,592,469)	-
<b>Total other financing sources (uses)</b>	<u>-</u>	<u>-</u>	<u>(5,592,469)</u>	<u>-</u>
<b>Change in fund balances</b>	77,509	6,883	2,465,786	2,156
Fund balances (deficits) at beginning	1,984,084	264,080	22,746,971	82,550
<b>Fund balances (deficits) at end of year</b>	<u>\$ 2,061,593</u>	<u>270,963</u>	<u>25,212,757</u>	<u>84,706</u>

Capital Public Art	Traffic Reduction Transportation Improvement	Total
-	1,223,682	\$ 1,223,682
26,589	140,122	885,390
4,569	-	4,569
-	-	7,426,124
31,158	1,363,804	9,539,765
-	(1,713,801)	(7,306,270)
-	(1,713,801)	(7,306,270)
31,158	(349,997)	2,233,495
1,014,477	5,749,384	31,841,546
1,045,635	5,399,387	\$ 34,075,041

**(This page intentionally left blank)**