



# PASADENA POLICE DEPARTMENT

## PRELIMINARY - Monthly Statistical Report

### January 2014

This Preliminary Monthly Statistical Report is based on Call for Service (CFS) data and is not Uniform Crime Report (UCR) compliant. Select call types are included for incidents closed with a report disposition. Using preliminary information allows for timely information to make immediate deployment decisions.

Offense	Service Area					
	1	2	3	4	5	
Homicide						
Rape			1			1
Robbery	2	5	1	3	4	15
ADW	1	9			1	11
Assault	3	8	1	2	11	25
Assault DV	1	5	1		3	10
Burglary Commercial	6	5	7	12	12	42
Burglary Other	2	1	1	1	2	7
Burglary Residential	3	14	9	7		33
Burglary Vehicle	14	8	4	9	7	42
Theft	38	23	32	25	43	161
<i>Recovered Vehicle</i>	3	3		1		7
Stolen Vehicle	4	2	6	3	3	18
	<b>74</b>	<b>80</b>	<b>63</b>	<b>62</b>	<b>86</b>	<b>365</b>

Offense	Council Districts							
	1	2	3	4	5	6	7	
Homicide								0
Rape		1						1
Robbery		1	6	3	1	3	1	15
ADW	5		1		3	1	1	11
Assault	4	1	7	2	4	6	1	25
Assault DV		1	4		3	1	1	10
Burglary Commercial	1	5	13	12	1	7	3	42
Burglary Other	1	1		1		3	1	7
Burglary Residential	7	4	4	8	5	2	3	33
Burglary Vehicle	6	1	10	9	2	6	8	42
Theft	8	15	31	28	12	29	38	161
<i>Recovered Vehicle</i>	3			1		2	1	7
Stolen Vehicle	1	2		3	4	5	3	18
	<b>33</b>	<b>32</b>	<b>76</b>	<b>66</b>	<b>35</b>	<b>63</b>	<b>60</b>	<b>365</b>

\*\*Totals do not include recovered vehicles

**INFORMATION IS TIME SENSITIVE AND SUBJECT TO CHANGE UPON FURTHER ANALYSIS**

**FOR PUBLIC DISTRIBUTION**

# PASADENA POLICE DEPARTMENT

Combined Service Areas and Council District - January 2014																						
Council District	West			Northwest				Central				East		Midtown								
	1	6	7	1	3	5	2	4	5	7	4	1	3	5	6	7						
Homicide																						
Rape								1				1								1		
Robbery		1	1	2		4	1	5	1			1	3	3		2		2		4	15	
ADW			1	1	5	1	3	9										1		1	11	
Assault	1	2		3	3	1	4	8	1			1	2	2		6		4	1	11	25	
Assault DV			1	1		3	2	5	1			1				1	1	1		3	10	
Burglary Commercial		6		6		4	1	5	5			2	7	12	12	1	9		1	1	12	42
Burglary Other		2		2	1			1	1			1	1	1				1	1	2	7	
Burglary Residential	1	2		3	6	4	4	14	4	1	1	3	9	7	7						33	
Burglary Vehicle	5	5	4	14	1	6	1	8	1		1	2	4	9	9		4		1	2	7	42
Theft	3	17	18	38	5	13	5	23	15	3	4	10	32	25	25		18	3	12	10	43	161
<i>Recovered Vehicle</i>		2	1	3	3			3						1	1						7	
Stolen Vehicle		4		4	1		1	2	2		2	2	6	3	3			1	1	1	3	18
	<b>10</b>	<b>39</b>	<b>25</b>	<b>74</b>	<b>22</b>	<b>36</b>	<b>22</b>	<b>80</b>	<b>32</b>	<b>4</b>	<b>8</b>	<b>19</b>	<b>63</b>	<b>62</b>	<b>62</b>	<b>1</b>	<b>40</b>	<b>5</b>	<b>24</b>	<b>16</b>	<b>86</b>	<b>365</b>

\*\* Totals do not include Recovered Vehicles

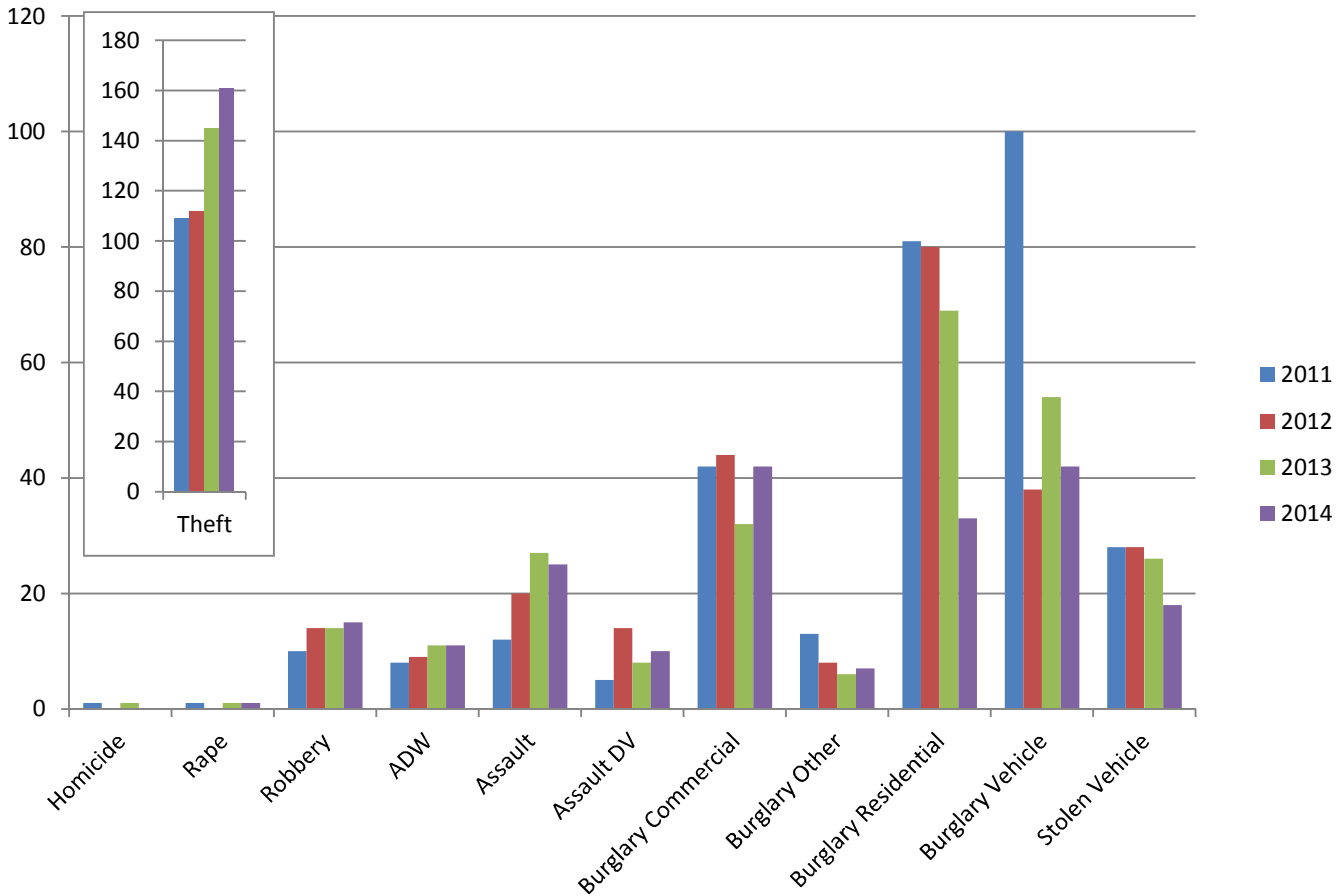
**INFORMATION IS TIME SENSITIVE AND SUBJECT TO CHANGE UPON FURTHER ANALYSIS**

**FOR PUBLIC DISTRIBUTION**

# PASADENA POLICE DEPARTMENT

## January 2011 - January 2014

	2011	2012	2013	2014	Change from 2013
Homicide	1		1		-100%
Rape	1		1	1	0%
Robbery	10	14	14	15	7%
ADW	8	9	11	11	0%
Assault	12	20	27	25	-7%
Assault DV	5	14	8	10	25%
Burglary Commercial	42	44	32	42	31%
Burglary Other	13	8	6	7	17%
Burglary Residential	81	80	69	33	-52%
Burglary Vehicle	100	38	54	42	-22%
Theft	109	112	145	161	11%
<i>Recovered Vehicle</i>	6	19	2	7	250%
Stolen Vehicle	28	28	26	18	-31%
	410	367	394	365	-7%



INFORMATION IS TIME SENSITIVE AND SUBJECT TO CHANGE UPON FURTHER ANALYSIS

FOR PUBLIC DISTRIBUTION