



PASADENA POLICE DEPARTMENT

PRELIMINARY - Monthly Statistical Report

May 2014

This Preliminary Monthly Statistical Report is based on Call for Service (CFS) data and is not Uniform Crime Report (UCR) compliant. Select call types are included for incidents closed with a report disposition. Using preliminary information allows for timely information to make immediate deployment decisions.

Offense	Service Areas					
	1	2	3	4	5	
Homicide						0
Rape	1	2				3
Robbery	1	2	1	2	2	8
ADW	1	7		3	3	14
Assault	5	7	2	1	7	22
Assault DV		7	5		1	13
Burglary Commercial	4	3	4	7	7	25
Burglary Other	7	1	3	2	1	14
Burglary Residential	7	10	7	3	3	30
Burglary Vehicle	5	10	7	5	14	41
Theft	27	29	35	21	32	144
<i>Recovered Vehicle</i>	<i>1</i>	<i>5</i>	<i>3</i>	<i>1</i>		<i>10</i>
Stolen Vehicle	5	7	8	2	7	29
	63	85	72	46	77	343

Offense	Council Districts							
	1	2	3	4	5	6	7	
Homicide								1
Rape	3							3
Robbery		1	1	2	2		2	8
ADW	4		2	3	2	3		14
Assault	4	2	4	1	3	7	1	22
Assault DV	2	3	3		4	1		13
Burglary Commercial	1	2	7	8	1	2	4	25
Burglary Other	1		1	3		1	8	14
Burglary Residential	5	4	4	3	2	7	5	30
Burglary Vehicle	2	6	6	5	6	8	8	41
Theft	13	20	19	25	23	23	21	144
<i>Recovered Vehicle</i>	<i>3</i>	<i>1</i>	<i>1</i>	<i>1</i>	<i>3</i>	<i>1</i>		<i>10</i>
Stolen Vehicle	3	3	4	2	7	7	3	29
	38	41	51	52	50	59	52	344

**Totals do not include recovered vehicles

INFORMATION IS TIME SENSITIVE AND SUBJECT TO CHANGE UPON FURTHER ANALYSIS

FOR PUBLIC DISTRIBUTION

PASADENA POLICE DEPARTMENT

Combined Service Areas and Council Districts - May 2014																						
Council District	West			Northwest				Central				East		Midtown								
	1	6	7	1	3	5	2	4	5	7	4	1	3	5	6	7						
Homicide																			0			
Rape	1			1	2		2												3			
Robbery			1	1		2	2	1				1	2	2		1		1	2	8		
ADW		1		1	4	1	2	7					3	3		1		2	3	14		
Assault		5		5	4	1	2	7	2			2	1	1		3	1	2	1	7	22	
Assault DV					2	3	2	7	3		2		5					1	1	13		
Burglary Commercial		1	3	4	1	2		3	2	1	1		4	7	7	5		1	1	7	25	
Burglary Other		1	6	7	1			1		1		2	3	2	2	1				1	14	
Burglary Residential		6	1	7	5	4	1	10	4		1	2	7	3	3			1	2	3	30	
Burglary Vehicle		4	1	5	2	3	5	10	6			1	7	5	5	3	1	4	6	14	41	
Theft	7	16	4	27	6	7	16	29	20	4	6	5	35	21	21		12	1	7	12	32	144
<i>Recovered Vehicle</i>		1		1	3	1	1	5	1		2		3	1	1						10	
Stolen Vehicle	1	4		5	2	2	3	7	3		3	2	8	2	2		2	1	3	1	7	29
	9	38	16	63	29	23	33	85	41	6	13	12	72	46	46	0	28	4	21	24	77	343

Combined Service Areas and Council Districts - 2014 Year to Date May																						
Offense	West			Northwest				Central				East		Midtown								
	1	6	7	1	3	5	2	4	5	7	4	1	3	5	6	7						
Homicide		1		1	2		2													3		
Rape	2	2		4	2		2	4	3				3				2	1		3	14	
Robbery	1	3	2	6	1	6	8	15	5		1	2	8	10	10		5	1	2	2	10	49
ADW		7	1	8	16	6	9	31				1	1	6	6		3		6	1	10	56
Assault	1	10	2	13	14	4	15	33	8		2	3	13	9	9		15	4	17	4	40	108
Assault DV		3	2	5	18	15	7	40	10		4		14	7	7	1	3	1	4		9	75
Burglary Commercial	1	24	6	31	2	11	7	20	21	2	3	4	30	47	47	1	33	1	8	8	51	179
Burglary Other	1	6	6	13	4	1		5	5	1	2	3	11	8	8		4		7	3	14	51
Burglary Residential	1	20	6	27	23	19	15	57	35	8	7	12	62	26	26		1	1	4	3	9	181
Burglary Vehicle	10	29	14	53	8	18	13	39	20	3	5	9	37	29	29		19	4	16	11	50	208
Theft	11	121	40	172	35	44	44	123	75	17	18	38	148	100	100		87	17	47	56	207	750
<i>Recovered Vehicle</i>		5	2	7	10	5	3	18	1	1	2	1	5	7	7		2				2	39
Stolen Vehicle	3	17	2	22	8	7	10	25	7		9	7	23	10	10		5	3	7	3	18	98
	31	243	81	355	133	131	130	394	189	31	51	79	350	252	252	2	177	33	118	91	421	1772

** Totals do not include Recovered Vehicles

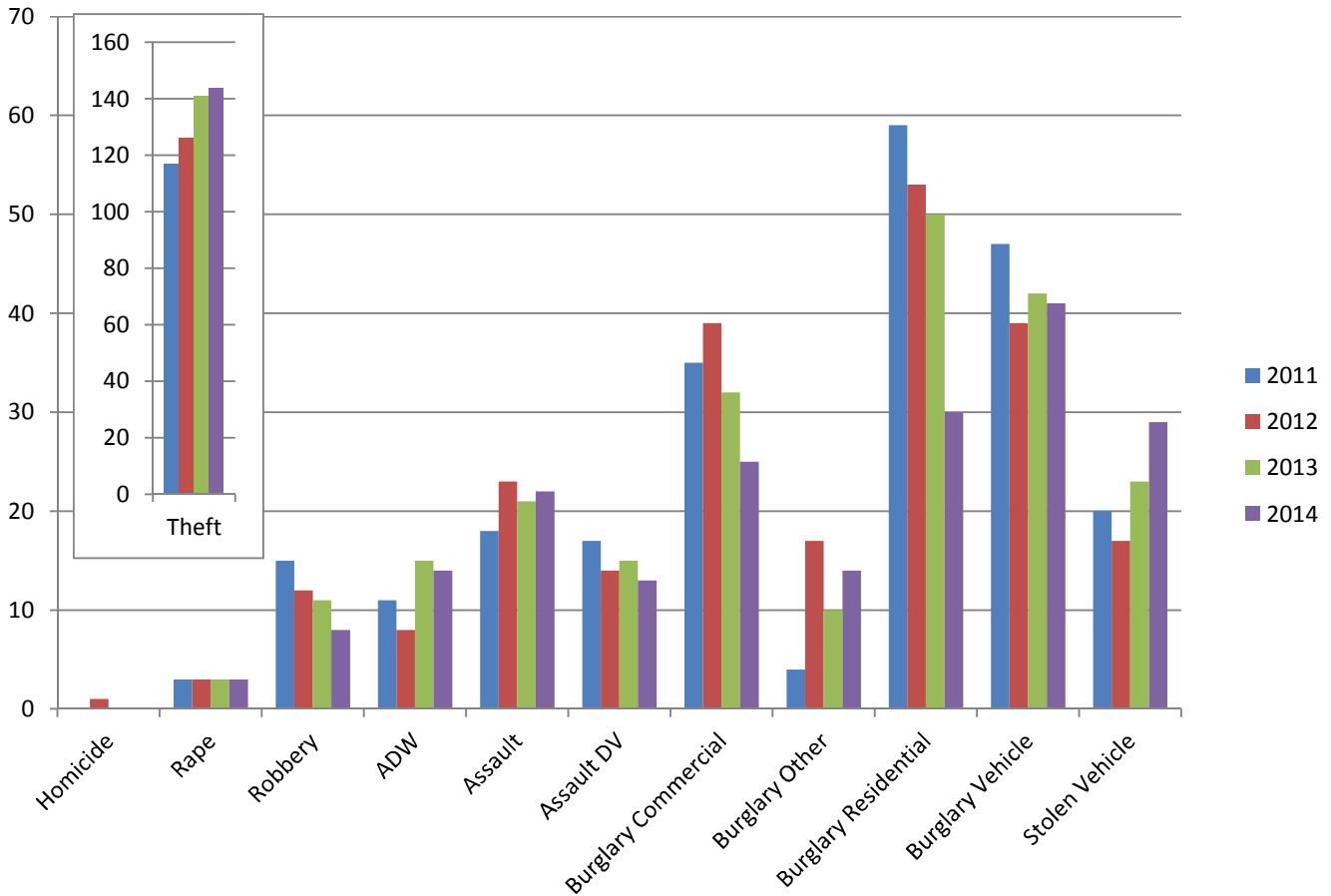
INFORMATION IS TIME SENSITIVE AND SUBJECT TO CHANGE UPON FURTHER ANALYSIS

FOR PUBLIC DISTRIBUTION

PASADENA POLICE DEPARTMENT

May 2011 - May 2014

	2011	2012	2013	2014	Change from 2013
Homicide		1			
Rape	3	3	3	3	0%
Robbery	15	12	11	8	-27%
ADW	11	8	15	14	-7%
Assault	18	23	21	22	5%
Assault DV	17	14	15	13	-13%
Burglary Commercial	35	39	32	25	-22%
Burglary Other	4	17	10	14	40%
Burglary Residential	59	53	50	30	-40%
Burglary Vehicle	47	39	42	41	-2%
Theft	117	126	141	144	2%
<i>Recovered Vehicle</i>	6	4	7	10	43%
Stolen Vehicle	20	17	23	29	26%
	346	352	363	343	-6%

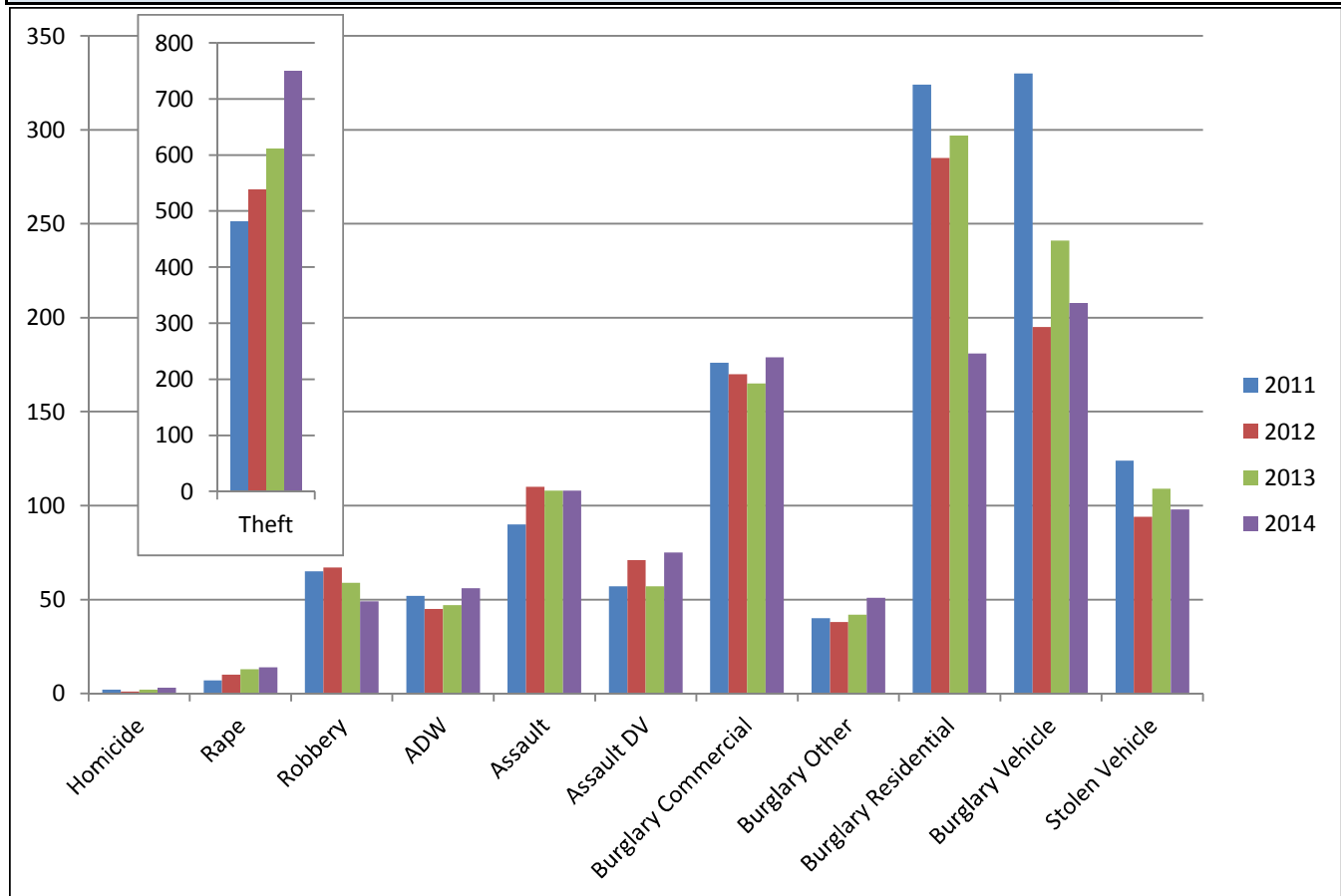


**INFORMATION IS TIME SENSITIVE AND SUBJECT TO CHANGE UPON FURTHER ANALYSIS
FOR PUBLIC DISTRIBUTION**

PASADENA POLICE DEPARTMENT

Year to Date through May

	2011	2012	2013	2014	Change from 2013
Homicide	2	1	2	3	50%
Rape	7	10	13	14	8%
Robbery	65	67	59	49	-17%
ADW	52	45	47	56	19%
Assault	90	110	108	108	0%
Assault DV	57	71	57	75	32%
Burglary Commercial	176	170	165	179	8%
Burglary Other	40	38	42	51	21%
Burglary Residential	324	285	297	181	-39%
Burglary Vehicle	330	195	241	208	-14%
Theft	481	537	612	750	23%
<i>Recovered Vehicles</i>	34	46	28	39	39%
Stolen Vehicle	124	94	109	98	-10%
Total	1748	1623	1752	1772	1%



INFORMATION IS TIME SENSITIVE AND SUBJECT TO CHANGE UPON FURTHER ANALYSIS

FOR PUBLIC DISTRIBUTION