



# PASADENA POLICE DEPARTMENT

## PRELIMINARY - Monthly Statistical Report

### August 2014

This Preliminary Monthly Statistical Report is based on Call for Service (CFS) data and is not Uniform Crime Report (UCR) compliant. Select call types are included for incidents closed with a report disposition. Using preliminary information allows for timely information to make immediate deployment decisions.

Offense	Service Areas					
	1	2	3	4	5	
Homicide						0
Rape		1				1
Robbery	4	6	1	3	4	18
ADW		3	1	4	4	12
Assault	11	8	5	1	5	30
Assault DV	2	4	2	2	2	12
Burglary Commercial	9	3		9	13	34
Burglary Other	1		2	1	6	10
Burglary Residential	14	16	17	7	3	57
Burglary Vehicle	8	8	7	4	6	33
Theft	21	13	19	29	32	114
<i>Recovered Vehicle</i>	3	2		1	2	8
Stolen Vehicle	3	7	2		4	16
	<b>73</b>	<b>69</b>	<b>56</b>	<b>60</b>	<b>79</b>	<b>337</b>

Offense	Council Districts							
	1	2	3	4	5	6	7	
Homicide								0
Rape			1					1
Robbery	2	1	6	3	4	2		18
ADW	2	1	3	4		2		12
Assault	10	2	7	1	5	4	1	30
Assault DV		1	3	2	4		2	12
Burglary Commercial	1		9	9	1	10	4	34
Burglary Other	1	1		1	3	2	2	10
Burglary Residential	10	12	4	9	4	13	5	57
Burglary Vehicle	9	4	7	4	3	1	5	33
Theft	8	10	19	30	11	22	14	114
<i>Recovered Vehicle</i>			3	1		4		8
Stolen Vehicle	2	1	3		4	6		16
	<b>45</b>	<b>33</b>	<b>62</b>	<b>63</b>	<b>39</b>	<b>62</b>	<b>33</b>	<b>337</b>

\*\*Totals do not include recovered vehicles

**INFORMATION IS TIME SENSITIVE AND SUBJECT TO CHANGE UPON FURTHER ANALYSIS**

**FOR PUBLIC DISTRIBUTION**

# PASADENA POLICE DEPARTMENT

Combined Service Areas and Council Districts - August 2014																						
	West				Northwest				Central				East		Midtown							
Council District	1	6	7		1	3	5		2	4	5	7		4		1	3	5	6	7		
Homicide																					0	
Rape						1		1													1	
Robbery	2	2		4		2	4	6	1				1	3	3		4				4	18
ADW					2	1		3	1				1	4	4		2		2		4	12
Assault	8	3		11	2	4	2	8	2		2	1	5	1	1		3	1	1		5	30
Assault DV			2	2		1	3	4	1		1		2	2	2		2				2	12
Burglary Commercial		9		9	1	1	1	3						9	9		8		1	4	13	34
Burglary Other			1	1					1		1		2	1	1	1		2	2	1	6	10
Burglary Residential		11	3	14	10	3	3	16	12	2	1	2	17	7	7		1		2		3	57
Burglary Vehicle	6		2	8	3	4	1	8	4		2	1	7	4	4		3		1	2	6	33
Theft	6	12	3	21	2	5	6	13	10	1	3	5	19	29	29		14	2	10	6	32	114
<i>Recovered Vehicle</i>		3		3		2		2						1	1		1		1		2	8
Stolen Vehicle		3		3	2	3	2	7	1		1		2					1	3		4	16
	<b>22</b>	<b>40</b>	<b>11</b>	<b>73</b>	<b>22</b>	<b>25</b>	<b>22</b>	<b>69</b>	<b>33</b>	<b>3</b>	<b>11</b>	<b>9</b>	<b>56</b>	<b>60</b>	<b>60</b>	<b>1</b>	<b>37</b>	<b>6</b>	<b>22</b>	<b>13</b>	<b>79</b>	<b>337</b>

Combined Service Areas and Council Districts - 2014 Year to Date August																						
	West				Northwest				Central				East		Midtown							
Offense	3	6	7		1	3	5		2	4	5	7		4		1	3	5	6	7		
Homicide		1		1	5			5														6
Rape	2	2		4	3	1	2	6	3				3				3	1			4	17
Robbery	3	5	2	10	4	10	13	27	6		2	2	10	14	14		9	1	3	5	18	79
ADW	2	7	1	10	28	13	12	53	1		1	1	3	11	11		9		10	2	21	98
Assault	11	18	2	31	19	13	20	52	16		7	5	28	14	14		23	6	22	5	56	181
Assault DV		4	5	9	22	20	16	58	13		6		19	11	11	1	6	2	5		14	111
Burglary Commercial	1	48	9	58	4	12	13	29	29	2	4	5	40	68	68	1	52	4	13	19	89	284
Burglary Other	1	8	8	17	6	1		7	6	1	3	3	13	10	10	1	4	2	10	7	24	71
Burglary Residential	1	41	15	57	42	31	25	98	56	14	12	17	99	48	48		2	2	6	3	13	315
Burglary Vehicle	21	39	20	80	20	25	17	62	28	4	7	12	51	42	42		36	4	20	19	79	314
Theft	22	166	55	243	54	64	68	186	105	21	24	48	198	171	171		146	21	75	76	318	1116
<i>Recovered Vehicle</i>		11	2	13	13	8	5	26	2	2	3	3	10	8	8		3		1	1	5	62
Stolen Vehicle	6	25	4	35	12	15	17	44	12		15	9	36	12	12	1	9	5	10	6	31	158
	<b>70</b>	<b>364</b>	<b>121</b>	<b>555</b>	<b>219</b>	<b>205</b>	<b>203</b>	<b>627</b>	<b>275</b>	<b>42</b>	<b>81</b>	<b>102</b>	<b>500</b>	<b>401</b>	<b>401</b>	<b>4</b>	<b>299</b>	<b>48</b>	<b>174</b>	<b>142</b>	<b>667</b>	<b>2750</b>

\*\* Totals do not include Recovered Vehicles

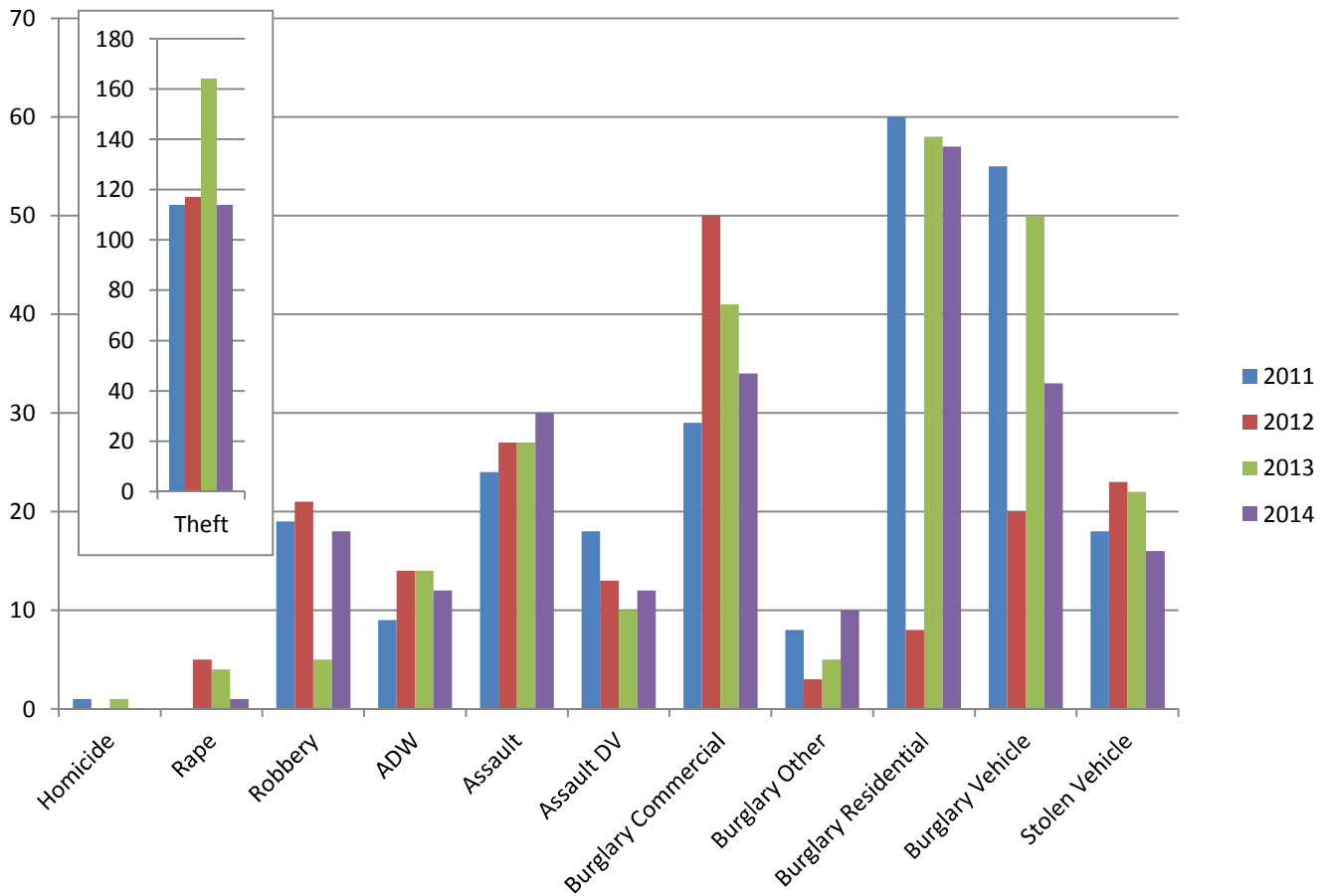
**INFORMATION IS TIME SENSITIVE AND SUBJECT TO CHANGE UPON FURTHER ANALYSIS**

**FOR PUBLIC DISTRIBUTION**

# PASADENA POLICE DEPARTMENT

## Aug 2011 - Aug 2014

	2011	2012	2013	2014	Change from 2013
Homicide	1	1	1		-100%
Rape		5	4	1	-75%
Robbery	19	21	5	18	260%
ADW	9	14	14	12	-14%
Assault	24	27	27	30	11%
Assault DV	18	13	10	12	20%
Burglary Commercial	29	50	41	34	-17%
Burglary Other	8	3	5	10	100%
Burglary Residential	60	46	58	57	-2%
Burglary Vehicle	55	20	50	33	-34%
Theft	114	117	164	114	-30%
<i>Recovered Vehicle</i>	5	6	9	8	-11%
Stolen Vehicle	18	23	22	16	-27%
	<b>355</b>	<b>339</b>	<b>401</b>	<b>337</b>	<b>-16%</b>

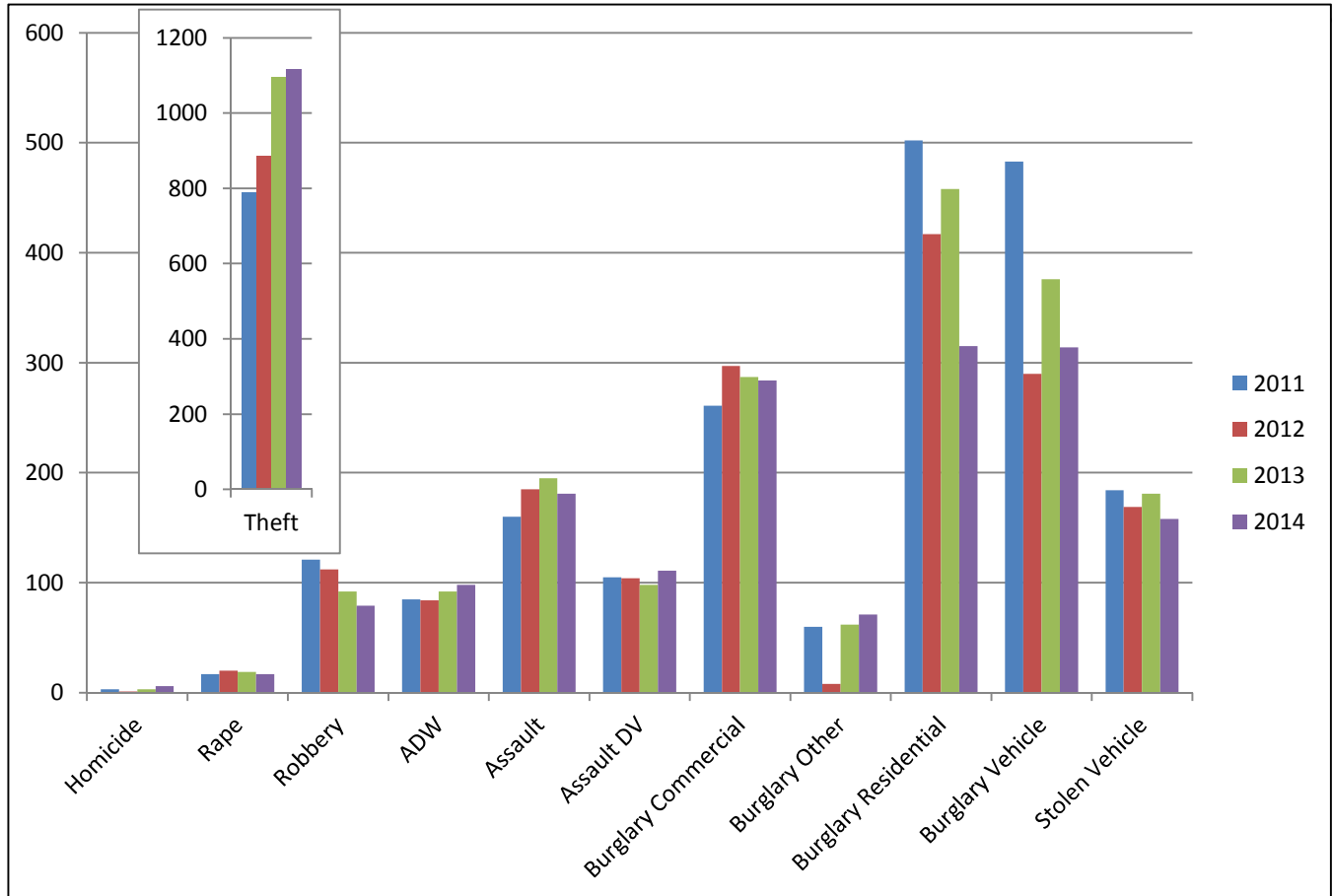


**INFORMATION IS TIME SENSITIVE AND SUBJECT TO CHANGE UPON FURTHER ANALYSIS  
FOR PUBLIC DISTRIBUTION**

# PASADENA POLICE DEPARTMENT

## Year to Date through August

	2011	2012	2013	2014	Change from 2013
Homicide	3	1	3	6	100%
Rape	17	20	19	17	-11%
Robbery	121	112	92	79	-14%
ADW	85	84	92	98	7%
Assault	160	185	195	181	-7%
Assault DV	105	104	98	111	13%
Burglary Commercial	261	297	287	284	-1%
Burglary Other	60	53	62	71	15%
Burglary Residential	502	417	458	315	-31%
Burglary Vehicle	483	290	376	314	-16%
Theft	791	887	1095	1116	2%
<i>Recovered Vehicles</i>	<i>51</i>	<i>65</i>	<i>58</i>	<i>62</i>	<i>7%</i>
Stolen Vehicle	184	169	181	158	-13%
<b>Total</b>	<b>2772</b>	<b>2619</b>	<b>2958</b>	<b>2750</b>	<b>-7%</b>



INFORMATION IS TIME SENSITIVE AND SUBJECT TO CHANGE UPON FURTHER ANALYSIS

FOR PUBLIC DISTRIBUTION