



PASADENA POLICE DEPARTMENT

PRELIMINARY - Monthly Statistical Report

October 2014

This Preliminary Monthly Statistical Report is based on Call for Service (CFS) data and is not Uniform Crime Report (UCR) compliant. Select call types are included for incidents closed with a report disposition. Using preliminary information allows for timely information to make immediate deployment decisions.

Offense	Service Areas					
	1	2	3	4	5	
Homicide					3	3
Rape	1	1	1			3
Robbery	1	7	1		3	12
ADW	1	9	1		3	14
Assault	3	11	3	1	6	24
Assault DV	1	8	8		1	18
Burglary Commercial	3	6	9	8	8	34
Burglary Other	3	3	1	1		8
Burglary Residential	12	20	9	9		50
Burglary Vehicle	4	9	10	6	11	40
Theft	25	14	27	25	31	122
<i>Recovered Vehicle</i>		1	3	1		5
Stolen Vehicle		6	3		3	12
	54	94	73	50	69	340

Offense	Council Districts							
	1	2	3	4	5	6	7	
Homicide			2			1		3
Rape		1			1	1		3
Robbery	1		3		6	1	1	12
ADW	2	1	6		5			14
Assault	5	1	8	1	4	3	2	24
Assault DV	2	3	3		9		1	18
Burglary Commercial	3	5	4	9	6	5	2	34
Burglary Other	3			1		2	2	8
Burglary Residential	12	4	6	9	4	10	5	50
Burglary Vehicle	5	5	8	6	2	7	7	40
Theft	5	5	23	27	15	20	27	122
<i>Recovered Vehicle</i>	1			2	1		1	5
Stolen Vehicle	3	2	4		2		1	12
	41	27	67	53	54	50	48	340

**Totals do not include recovered vehicles

INFORMATION IS TIME SENSITIVE AND SUBJECT TO CHANGE UPON FURTHER ANALYSIS

FOR PUBLIC DISTRIBUTION

PASADENA POLICE DEPARTMENT

Combined Service Areas and Council Districts - October 2014																						
Council District	West				Northwest				Central				East		Midtown							
	1	6	7		1	3	5		2	4	5	7		4		1	3	5	6	7		
Homicide																2		1		3	3	
Rape		1		1			1	1	1				1								3	
Robbery		1		1	1	2	4	7			1		1			1	1		1	3	12	
ADW	1			1	1	3	5	9	1				1			3				3	14	
Assault	2	1		3	3	4	4	11	1			2	3	1	1	4		2		6	24	
Assault DV			1	1	2	3	3	8	3		5		8				1			1	18	
Burglary Commercial		2	1	3	3	2	1	6	5	1	3		9	8	8		2	2	3	1	8	34
Burglary Other		2	1	3	3			3				1	1	1	1						8	
Burglary Residential		10	2	12	12	6	2	20	4		2	3	9	9	9						50	
Burglary Vehicle		2	2	4	5	3	1	9	5		1	4	10	6	6		5		5	1	11	40
Theft	1	16	8	25	3	8	3	14	5	2	10	10	27	25	25	1	15	2	4	9	31	122
<i>Recovered Vehicle</i>					1			1		1	1	1	3	1	1						5	
Stolen Vehicle					2	3	1	6	2				1	3		1	1	1			3	12
	4	35	15	54	35	34	25	94	27	3	22	21	73	50	50	2	33	7	15	12	69	340

Combined Service Areas and Council Districts - 2014 Year to Date October																						
Offense	West				Northwest				Central				East		Midtown							
	3	6	7		1	3	5		2	4	5	7		4		1	3	5	6	7		
Homicide		1		1	5			5								2		1		3	9	
Rape	2	4		6	3	1	3	7	5			1	6	1	1		3	1			4	24
Robbery	3	8	2	13	5	13	18	36	7		3	2	12	16	16		11	2	4	7	24	101
ADW	3	8	1	12	31	19	17	67	2		1	1	4	11	11		14		12	2	28	122
Assault	15	20	5	40	28	17	29	74	17		7	8	32	19	19		27	7	26	5	65	230
Assault DV		5	6	11	29	27	27	83	20		12	1	33	12	12	1	6	3	6	3	19	158
Burglary Commercial	1	50	11	62	9	16	15	40	37	3	8	5	53	84	84	1	62	8	17	20	108	347
Burglary Other	1	10	9	20	10	1		11	6	1	3	4	14	14	14	1	4	2	11	8	26	85
Burglary Residential	1	56	18	75	60	42	36	138	69	17	15	21	122	66	66		2	3	6	3	14	415
Burglary Vehicle	30	46	25	101	29	32	19	80	37	4	9	17	67	56	56		42	4	30	23	99	403
Theft	29	199	66	294	63	80	76	219	120	25	41	60	246	223	223	1	177	25	87	92	382	1364
<i>Recovered Vehicle</i>		13	2	15	16	8	6	30	2	3	4	4	13	11	11		3		1	1	5	74
Stolen Vehicle	6	28	4	38	15	20	19	54	15		16	13	44	15	15	2	10	6	11	7	36	187
	91	435	147	673	287	268	259	814	335	50	115	133	633	517	517	6	360	61	211	170	808	3445

** Totals do not include Recovered Vehicles

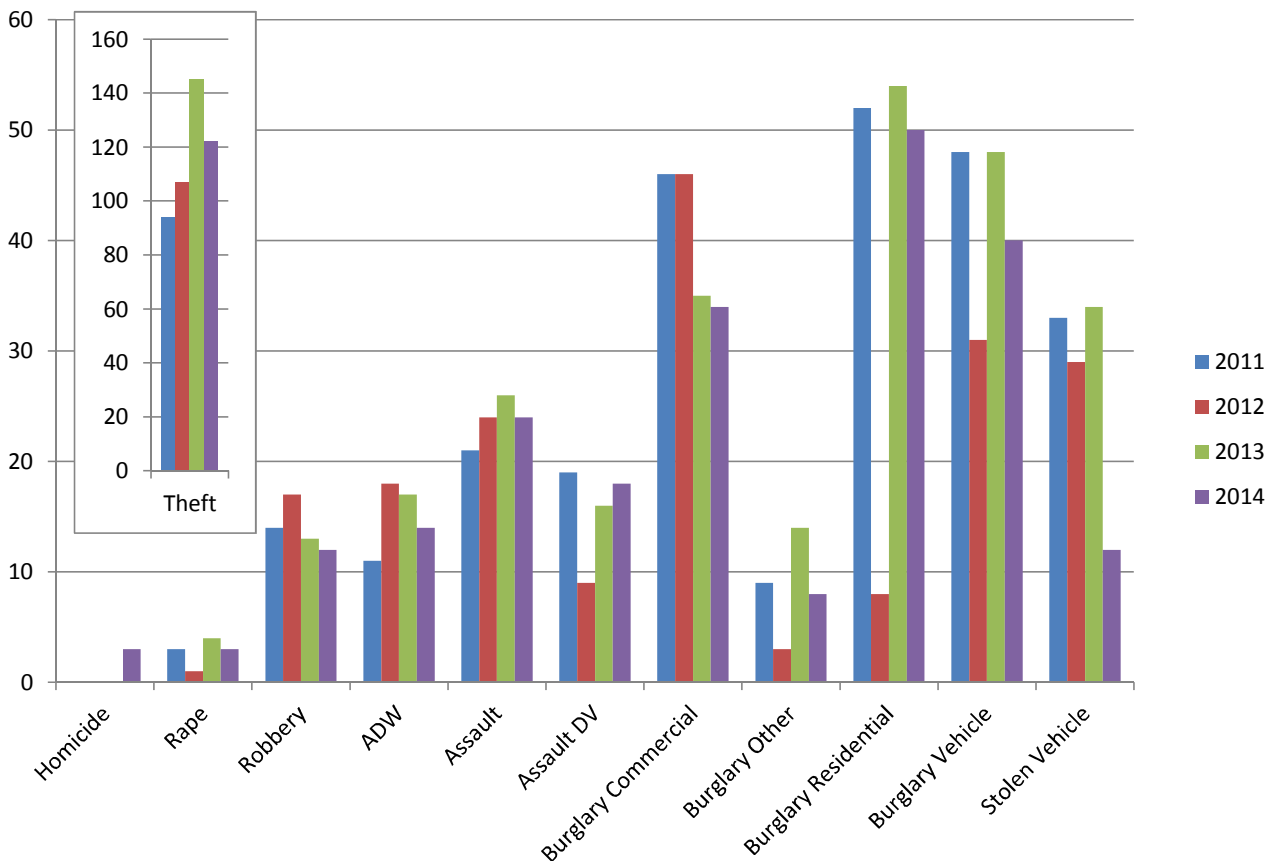
INFORMATION IS TIME SENSITIVE AND SUBJECT TO CHANGE UPON FURTHER ANALYSIS

FOR PUBLIC DISTRIBUTION

PASADENA POLICE DEPARTMENT

Oct 2011 - Oct 2014

	2011	2012	2013	2014	Change from 2013
Homicide				3	N/C
Rape	3	1	4	3	-25%
Robbery	14	17	13	12	-8%
ADW	11	18	17	14	-18%
Assault	21	24	26	24	-8%
Assault DV	19	9	16	18	13%
Burglary Commercial	46	46	35	34	-3%
Burglary Other	9	3	14	8	-43%
Burglary Residential	52	47	54	50	-7%
Burglary Vehicle	48	31	48	40	-17%
Theft	94	107	145	122	-16%
<i>Recovered Vehicle</i>	9	10	11	5	-55%
Stolen Vehicle	33	29	34	12	-65%
	350	332	406	340	-16%

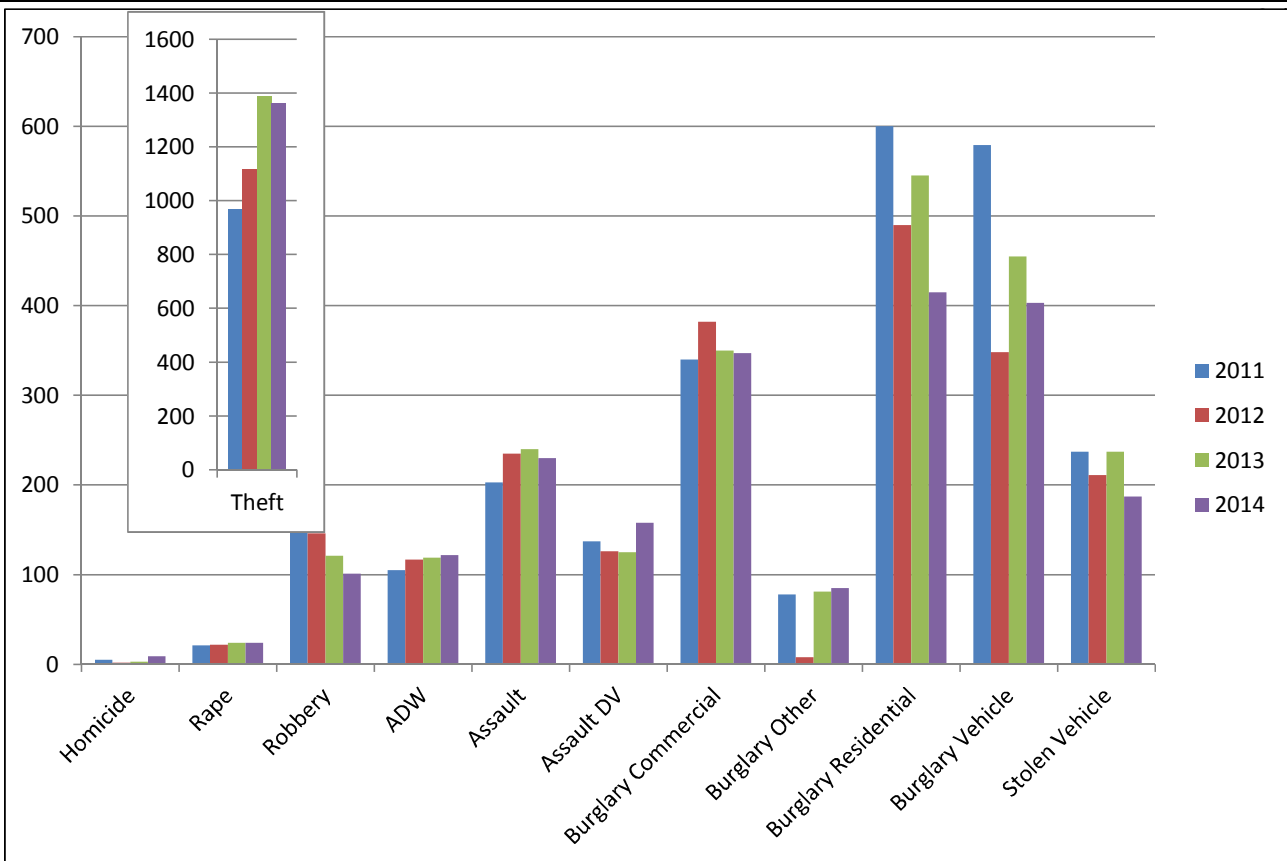


**INFORMATION IS TIME SENSITIVE AND SUBJECT TO CHANGE UPON FURTHER ANALYSIS
FOR PUBLIC DISTRIBUTION**

PASADENA POLICE DEPARTMENT

Year to Date through October

	2011	2012	2013	2014	Change from 2013
Homicide	5	2	3	9	200%
Rape	21	22	24	24	0%
Robbery	147	146	121	101	-17%
ADW	105	117	119	122	3%
Assault	203	235	240	230	-4%
Assault DV	137	126	125	158	26%
Burglary Commercial	340	382	350	347	-1%
Burglary Other	78	65	81	85	5%
Burglary Residential	600	490	545	415	-24%
Burglary Vehicle	579	348	455	403	-11%
Theft	970	1118	1388	1364	-2%
Recovered Vehicles	66	78	83	74	-11%
Stolen Vehicle	237	211	237	187	-21%
Total	3422	3262	3688	3445	-7%



INFORMATION IS TIME SENSITIVE AND SUBJECT TO CHANGE UPON FURTHER ANALYSIS

FOR PUBLIC DISTRIBUTION