



PASADENA POLICE DEPARTMENT

PRELIMINARY - Monthly Statistical Report

November 2014

This Preliminary Monthly Statistical Report is based on Call for Service (CFS) data and is not Uniform Crime Report (UCR) compliant. Select call types are included for incidents closed with a report disposition. Using preliminary information allows for timely information to make immediate deployment decisions.

Offense	Service Areas					
	1	2	3	4	5	
Homicide						0
Rape	1					1
Robbery	2	7	2			11
ADW	1	8	3	1	1	14
Assault	9	9	2	3	9	32
Assault DV	2	9	3		3	17
Burglary Commercial	7	3	2	3	7	22
Burglary Other		1	4	3	7	15
Burglary Residential	15	11	9	10	2	47
Burglary Vehicle	11	6	9	6	15	47
Theft	24	10	20	22	35	111
<i>Recovered Vehicle</i>	<i>1</i>	<i>3</i>	<i>3</i>	<i>1</i>		<i>8</i>
Stolen Vehicle	5	4	7		3	19
	77	68	61	48	82	336

Offense	Council Districts							
	1	2	3	4	5	6	7	
Homicide								0
Rape						1		1
Robbery		1	3		5	2		11
ADW	4	2	1	1	4	2		14
Assault	8		6	3	4	10	1	32
Assault DV	6		5		3	2	1	17
Burglary Commercial	3	1	5	3	2	5	3	22
Burglary Other		3	3	3	2	1	3	15
Burglary Residential	6		4	13	2	12	10	47
Burglary Vehicle	5	1	11	6	1	11	12	47
Theft	6	11	22	22	11	24	15	111
<i>Recovered Vehicle</i>	<i>2</i>	<i>2</i>	<i>1</i>	<i>2</i>		<i>1</i>	<i>1</i>	<i>9</i>
Stolen Vehicle	2	3	4		1	5	4	19
	40	22	64	51	35	75	49	336

**Totals do not include recovered vehicles

INFORMATION IS TIME SENSITIVE AND SUBJECT TO CHANGE UPON FURTHER ANALYSIS

FOR PUBLIC DISTRIBUTION

PASADENA POLICE DEPARTMENT

Combined Service Areas and Council Districts - November 2014																					
Council District	West			Northwest				Central				East		Midtown							
	1	6	7	1	3	5	2	4	5	7	4	1	3	5	6	7					
Homicide																				0	
Rape		1		1																1	
Robbery		2		2		3	4	7	1		1		2							11	
ADW		1		1	4	1	3	8	2		1		3	1	1				1	14	
Assault	4	5		9	4	4	1	9			2		2	3	3		2	1	5	32	
Assault DV		2		2	5	3	1	9			2	1	3			1	2			17	
Burglary Commercial	1	4	2	7	2	1		3	1		1		2	3	3		4	1	1	22	
Burglary Other							1	1	3				1	4	3	3		3	1	15	
Burglary Residential		12	3	15	6	4	1	11			3	1	5	9	10	10				47	
Burglary Vehicle	2	6	3	11	3	3		6	1		1	7	9	6	6		8		5	47	
Theft	1	18	5	24	4	2	4	10	11		6	3	20	22	22	1	20	1	6	111	
Recovered Vehicle		1		1	2	1		3	2			1	3	2	2					9	
Stolen Vehicle		4	1	5	2	2		4	3			1	3	7			2		1	19	
Totals	8	55	14	77	30	23	15	68	22	3	16	20	61	48	48	2	41	4	20	82	336

Combined Service Areas and Council Districts - 2014 Year to Date November																						
Offense	West			Northwest				Central				East		Midtown								
	1	6	7	1	3	5	2	4	5	7	4	1	3	5	6	7						
Homicide		1		1	5			5								2		1		9		
Rape	2	5		7	3	1	3	7	5			1	6	1	1		3	1		25		
Robbery	3	10	2	15	5	16	22	43	8		4	2	14	16	16		11	2	4	112		
ADW	3	9	1	13	35	20	20	75	4		2	1	7	12	12		14		13	136		
Assault	19	25	5	49	32	21	30	83	17		9	8	34	22	22		29	8	31	262		
Assault DV		7	6	13	34	30	28	92	20		14	2	36	12	12	2	8	3	6	175		
Burglary Commercial	2	54	13	69	11	17	15	43	38	3	9	5	55	87	87	1	66	9	18	369		
Burglary Other	1	10	9	20	10	1	1	12	9	1	3	5	18	17	17	1	7	3	12	100		
Burglary Residential	1	68	21	90	66	46	37	149	69	20	16	26	131	76	76		2	3	6	462		
Burglary Vehicle	32	52	28	112	32	35	19	86	38	4	10	24	76	62	62		50	4	35	450		
Theft	30	217	71	318	67	82	80	229	131	25	47	63	266	245	245	2	197	26	93	1475		
Recovered Vehicle		14	2	16	18	9	6	33	4	3	4	5	16	13	13		3		1	83		
Stolen Vehicle	6	32	5	43	17	22	19	58	18		17	16	51	15	15	2	12	6	12	206		
Totals	99	490	161	750	317	291	274	882	357	53	131	153	694	565	565	8	401	65	231	185	890	3781

** Totals do not include Recovered Vehicles

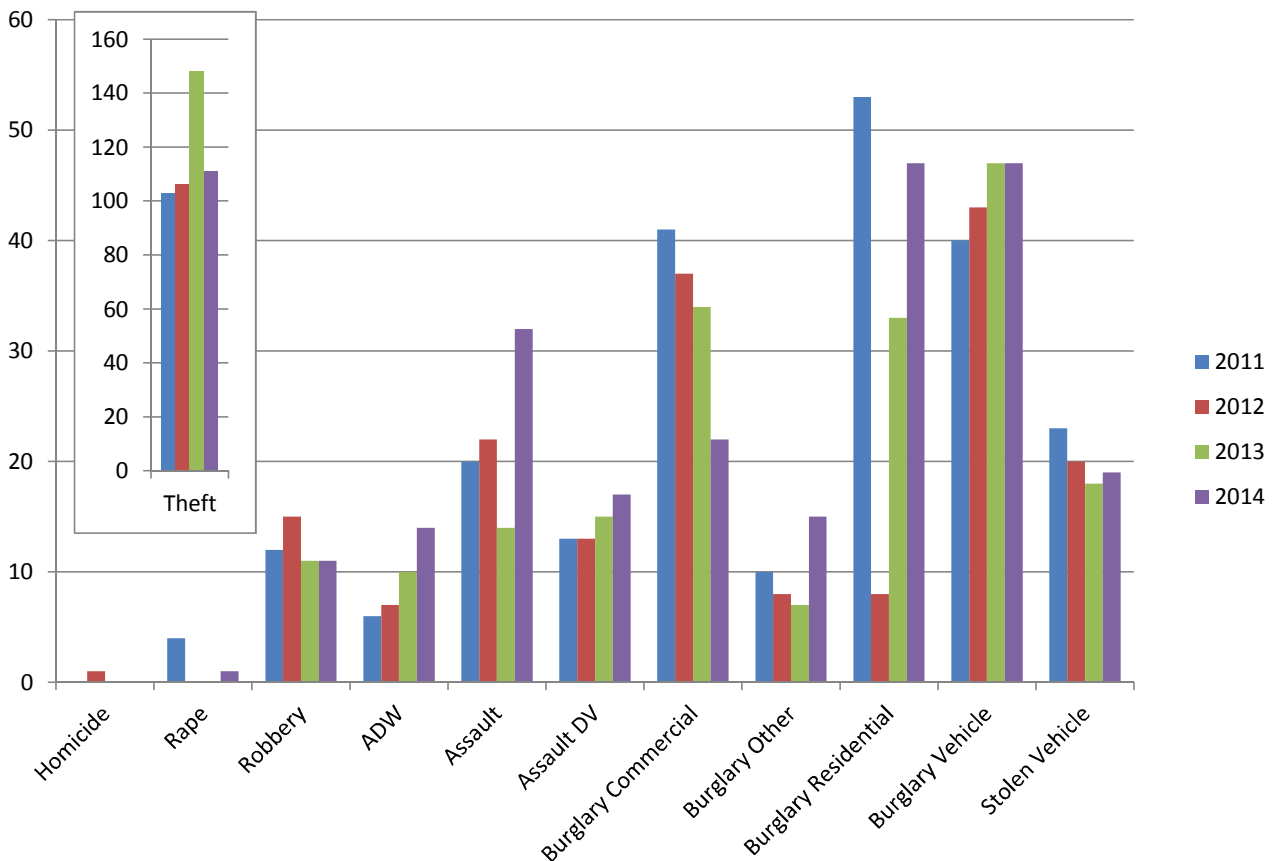
INFORMATION IS TIME SENSITIVE AND SUBJECT TO CHANGE UPON FURTHER ANALYSIS

FOR PUBLIC DISTRIBUTION

PASADENA POLICE DEPARTMENT

Nov 2011 - Nov 2014

	2011	2012	2013	2014	Change from 2013
Homicide		1			N/C
Rape	4			1	N/C
Robbery	12	15	11	11	0%
ADW	6	7	10	14	40%
Assault	20	22	14	32	129%
Assault DV	13	13	15	17	13%
Burglary Commercial	41	37	34	22	-35%
Burglary Other	10	8	7	15	114%
Burglary Residential	53	70	33	47	42%
Burglary Vehicle	40	43	47	47	0%
Theft	103	106	148	111	-25%
<i>Recovered Vehicle</i>	<i>13</i>	<i>8</i>	<i>19</i>	<i>9</i>	<i>-53%</i>
Stolen Vehicle	23	20	18	19	6%
	325	342	337	336	0%

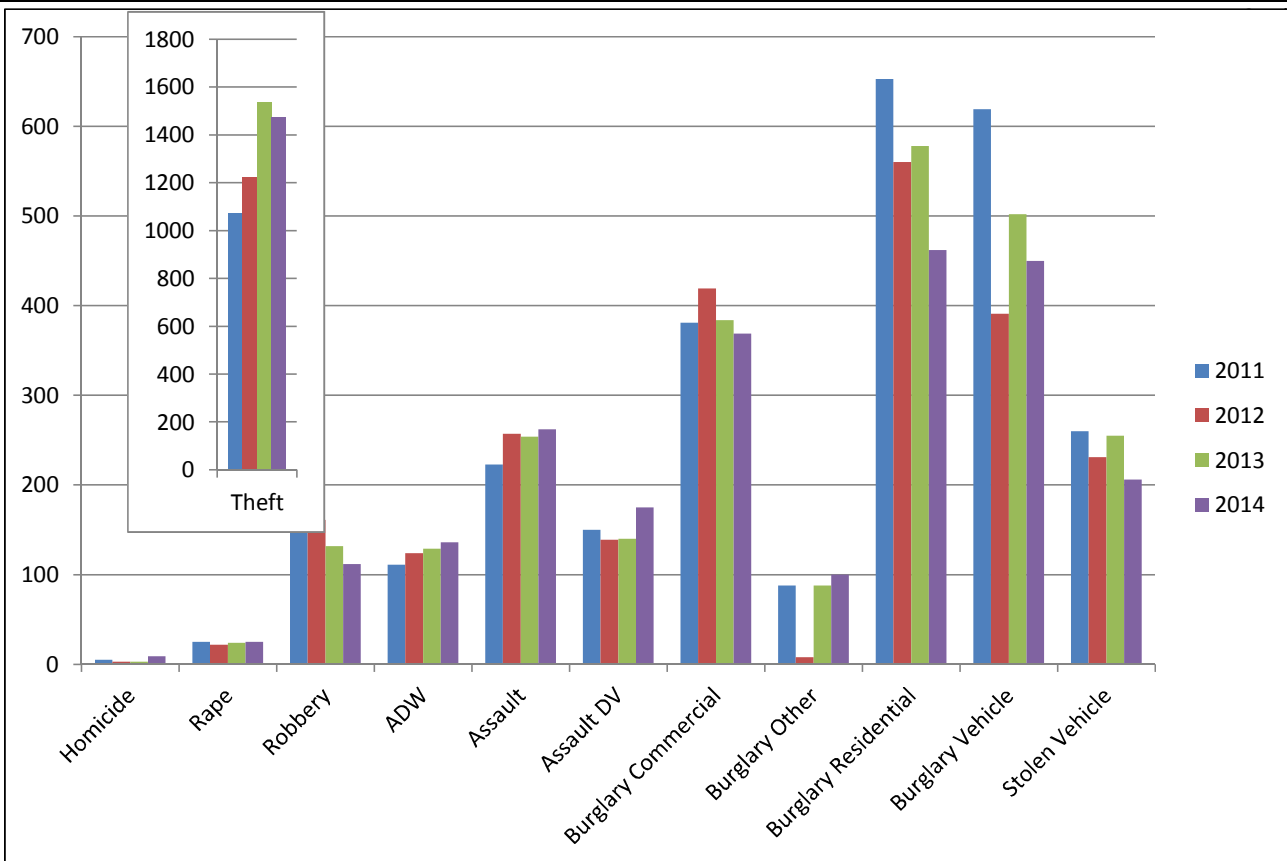


**INFORMATION IS TIME SENSITIVE AND SUBJECT TO CHANGE UPON FURTHER ANALYSIS
FOR PUBLIC DISTRIBUTION**

PASADENA POLICE DEPARTMENT

Year to Date through November

	2011	2012	2013	2014	Change from 2013
Homicide	5	3	3	9	200%
Rape	25	22	24	25	4%
Robbery	159	161	132	112	-15%
ADW	111	124	129	136	5%
Assault	223	257	254	262	3%
Assault DV	150	139	140	175	25%
Burglary Commercial	381	419	384	369	-4%
Burglary Other	88	73	88	100	14%
Burglary Residential	653	560	578	462	-20%
Burglary Vehicle	619	391	502	450	-10%
Theft	1073	1224	1536	1475	-4%
<i>Recovered Vehicles</i>	<i>79</i>	<i>86</i>	<i>102</i>	<i>83</i>	<i>-19%</i>
Stolen Vehicle	260	231	255	206	-19%
Total	3747	3604	4025	3781	-6%



**INFORMATION IS TIME SENSITIVE AND SUBJECT TO CHANGE UPON FURTHER ANALYSIS
FOR PUBLIC DISTRIBUTION**