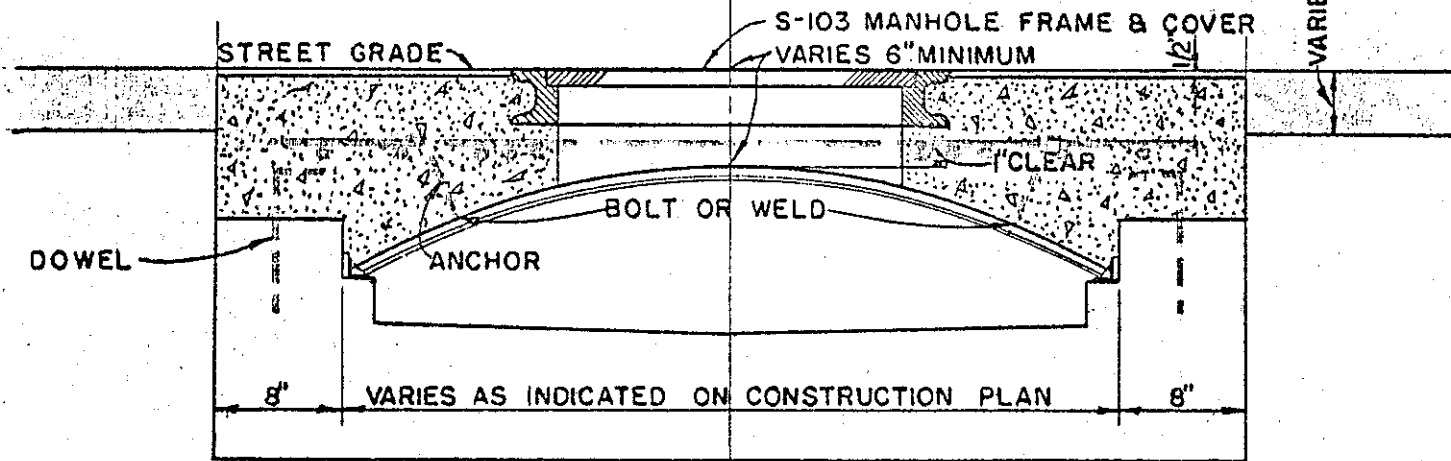


PLAN



TYPICAL SECTION

CITY OF PASADENA ENGINEERING - STREET DEPARTMENT MANHOLE DETAIL FOR ROAD SECTION OF PART CIRCLE CULVERTS			
SCALE 1/8" = 1'-0" DRAWN BY E.R.R. CHECKED BY H.H.N. FIELD BOOK NO. REFER TO DWG. NO. G-1449	SUBMITTED BY <i>James H. [unclear]</i> APPROVED BY <i>Douglas C. Mackinnon</i> DATE APPROVED <i>March 23, 1959</i>	JOB NUMBER DATE CONSTR.	DRAWING NUMBER G-1449A