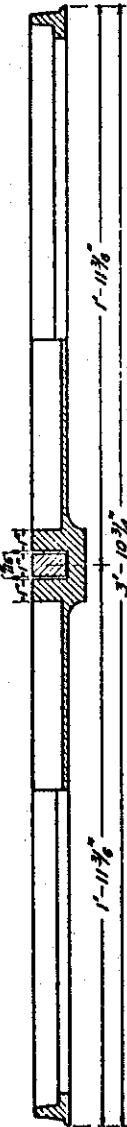
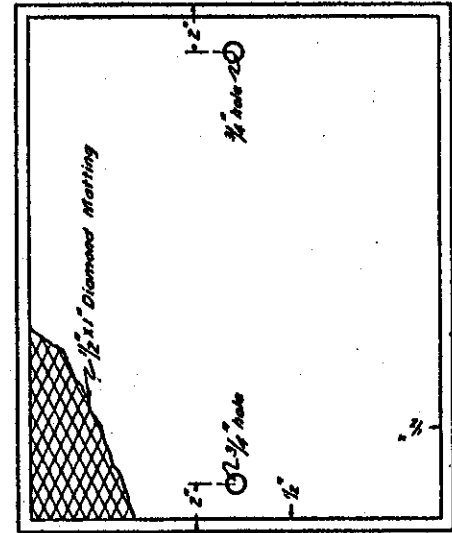


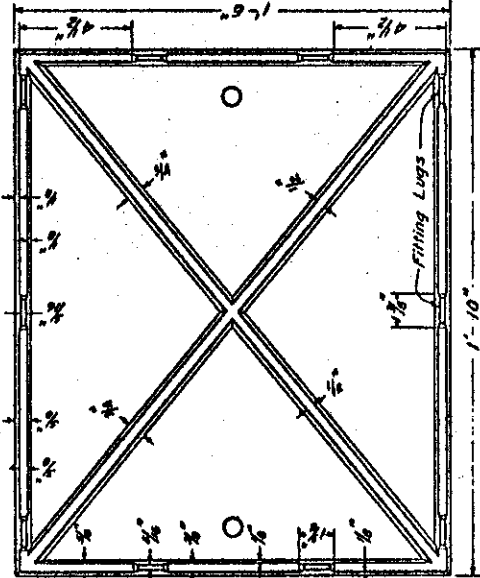
PLAN OF FRAME



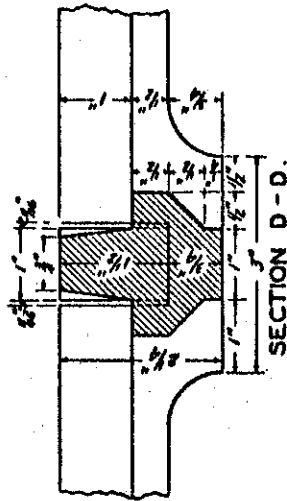
SECTION A-A



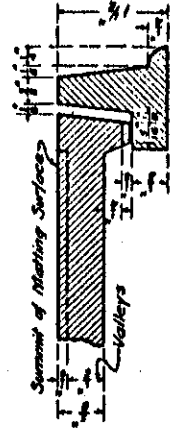
TOP PLAN OF COVER.



BOTTOM PLAN OF COVER.



SECTION D-D.



SECTION E-E WITH COVER.

NOTE
 a-Castings to be made and shipped in asphalt or coat for and oil according to Specifications No. 31, Section 32, of the City of Pasadena.
 b-Mill frame seat and fitting lugs to give cover even fit in both positions.
 c-Weight of frame 42 lbs. & cross bar - 18 lbs.
 d-Weight of cover - 61 lbs each.

CITY OF PASADENA
 OFFICE OF THE CITY ENGINEER & SUPERVISOR OF STREETS
STANDARD
DOUBLE FRAME & COVER
FOR SIDEWALK CULVERTS
 SUBMITTED BY: *(Signature)*
 APPROVED BY: *(Signature)*
 CITY ENGINEER & SUPERVISOR OF STREETS
 DATE: *(Date)* 1932
 CHECKED BY: *(Signature)*