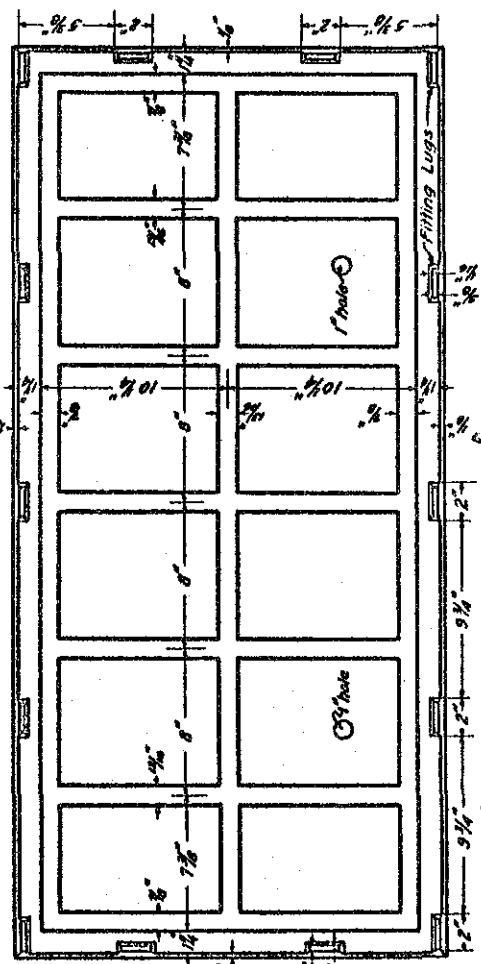


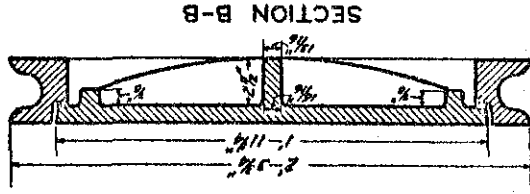
PLAN OF FRAME AND COVER.



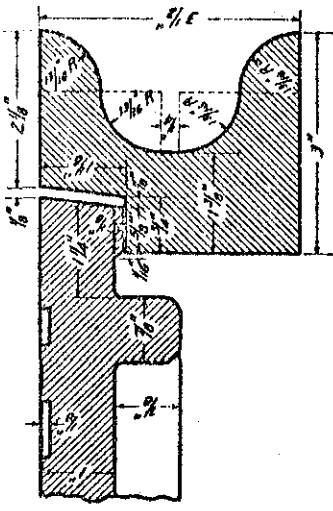
SECTION A-A.



BOTTOM PLAN OF COVER.



SECTION B-B.



SECTION C-C.

NOTE.
 a-Coverings to be made and slipped in
 asphalt or coal tar and oil
 according to Specifications No. 31,
 Section 32, of the City of
 Pasadena.
 b-Mill frame seat and fitting logs
 to give cover even fit in both
 positions. lbs.
 c-Weight of frame - lbs.
 d-Weight of cover - lbs.

CITY OF PASADENA
 OFFICE OF CITY ENGINEER & SUPERVISOR OF STREETS
STANDARD
FRAME & COVER
FOR ROADWAY & DRIVEWAY CULVERTS.
 SUBMITTED BY *J. H. [Signature]* ENGINEER OF C.E.S.
 PASADENA, CALIFORNIA - CHECKED BY LOCAL
 APPROVED BY *M. H. [Signature]*
 CITY ENGINEER & SUPERVISOR OF STREETS
 DATE: MAY 5, 1922.