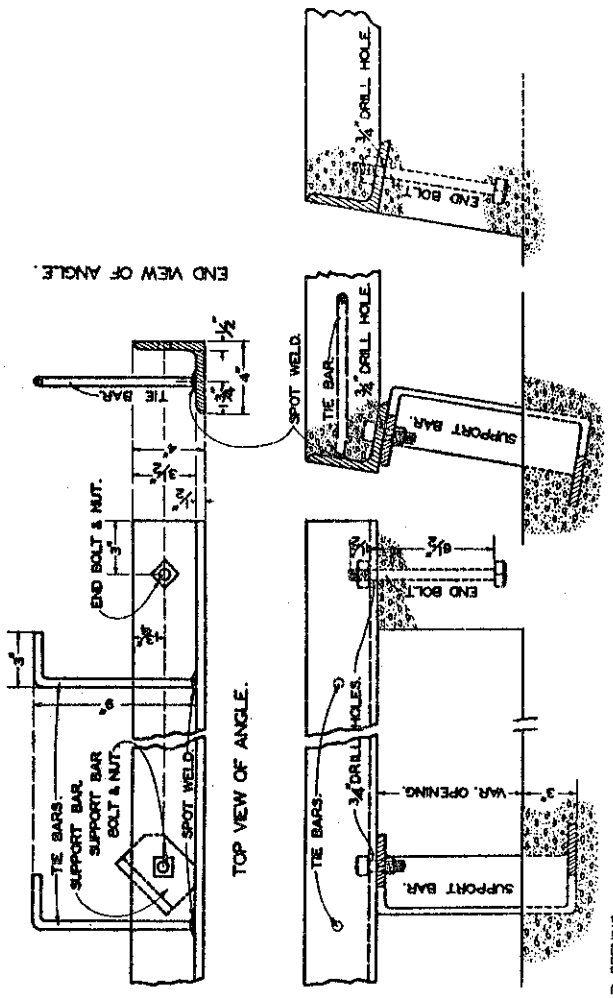


Note: All culvert construction details to conform with the City of Pasadena Specifications No. 31 as amended.

Angle iron assembly with its bars, bolts, nuts, and support bars to be hot dip galvanized after fabrication.

DESCRIPTION	LENGTH OF OPENING IN FEET	NUMBER OF 1/2" ANGLE IN FEET	NUMBER OF 3/8" SUPPORT BARS	NUMBER OF 1/2" BARS IN FEET	NUMBER OF 3/8" SUPPORT BARS AND BOLTS & NUTS	NUMBER OF 3/4" DRILL HOLES IN ANGLE
A	4	5	2	0	2	2
B	5	6	4	0	2	2
C	7	6	4	0	2	2
D	10	11	6	1	2	3
E	12	13	8	1	2	3
F	15	16	10	2	2	4
G	20	21	14	3	2	5
H	25	26	16	4	2	6
I	30	31	20	5	2	7

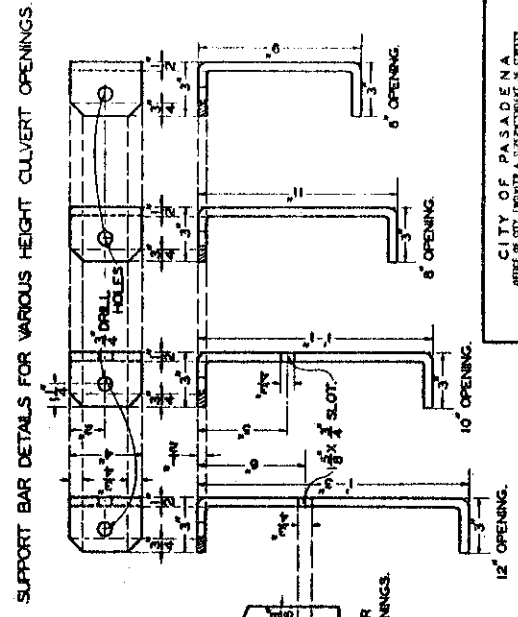
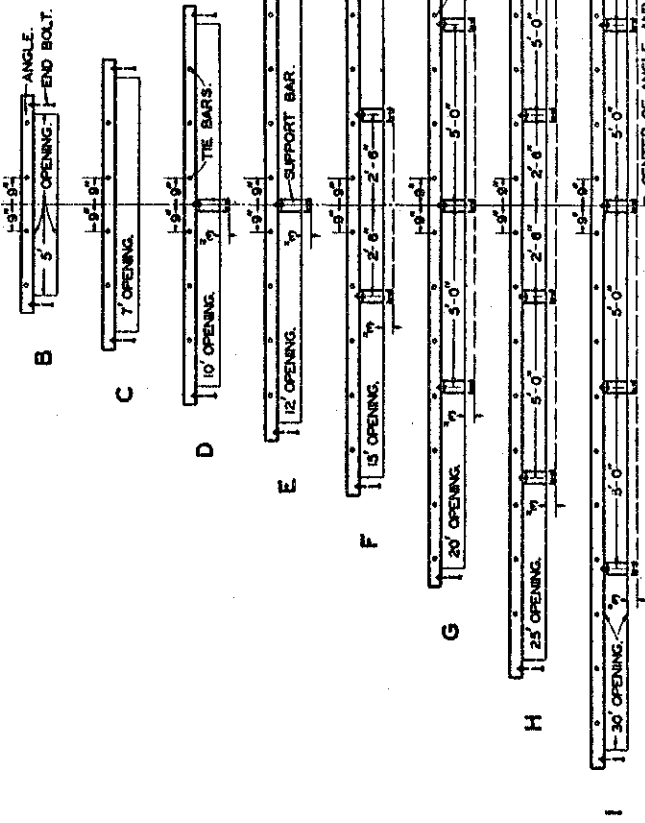
NOTE--
ALL THE BARS TO BE SPOT WELDED TO BACK OF ANGLE AND 1'-6" C-C AS SHOWN. DRILL 3/4" HOLES IN BOTTOM FLANGE OF ANGLE TO TAKE SUPPORT BAR BOLTS AND END BOLTS AS SHOWN.



FRONT ELEVATION OF OPENING. SHOWING SUPPORT BAR AND END BOLT.

SECTION AT SUPPORT BAR.

SECTION AT END BOLT.



SUPPORT BAR DETAILS FOR VARIOUS HEIGHT CULVERT OPENINGS.

FRONT ELEVATION OF OPENINGS. SEE TABLE ABOVE.

CITY OF PASADENA
OFFICE OF CITY ENGINEER & SUPERVISOR OF STREETS
STANDARD
CULVERT OPENINGS
AND APPURTENANCES.
SUBMITTED BY: McCluggage DRAWN BY: R.C.M.
ASSISTANT ENGINEER. CHECKED BY: R.C.M.
APPROVED BY: McCluggage
CITY ENGINEER & SUPERVISOR OF STREETS.
DATE: April 1, 1933.

S-109