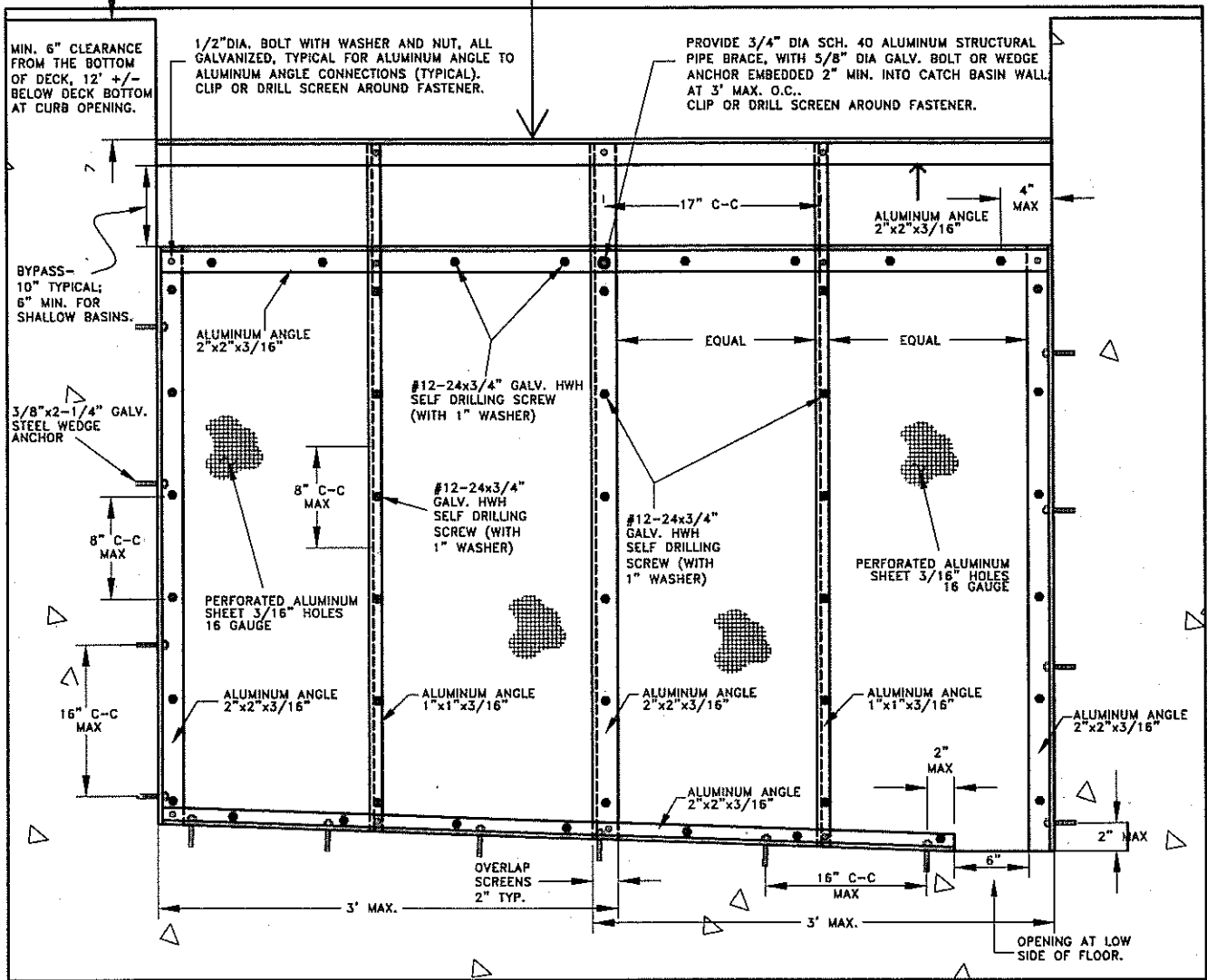



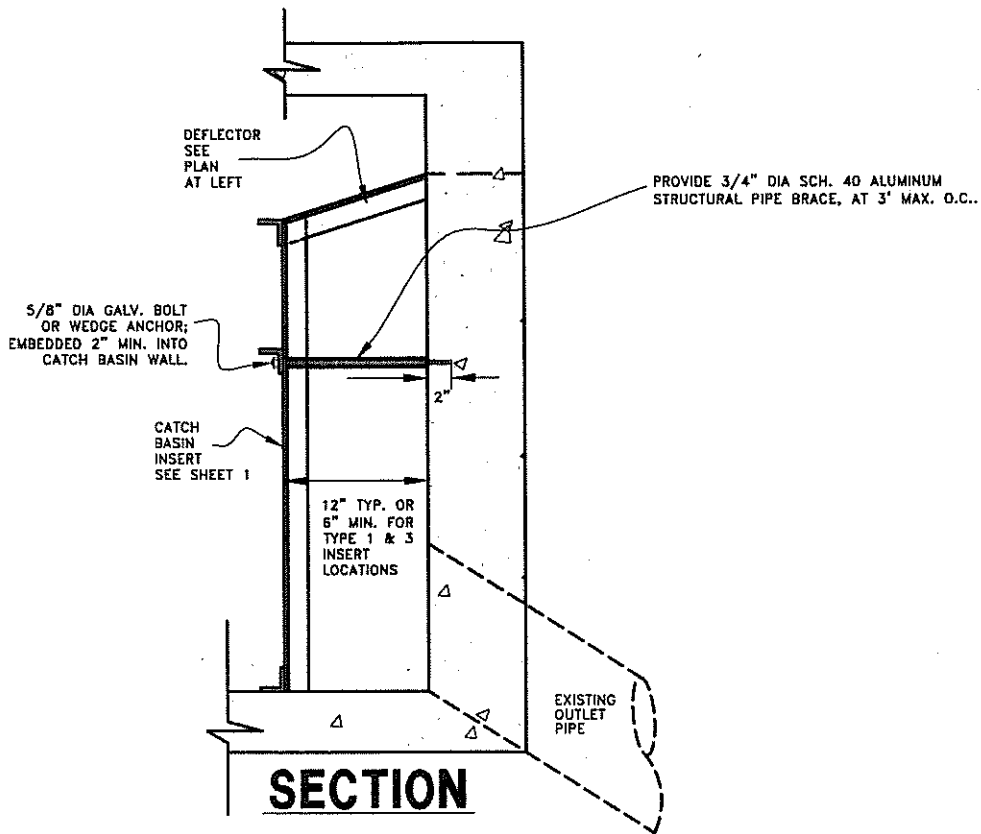
# DEFLECTOR (SEE SHEET 2)



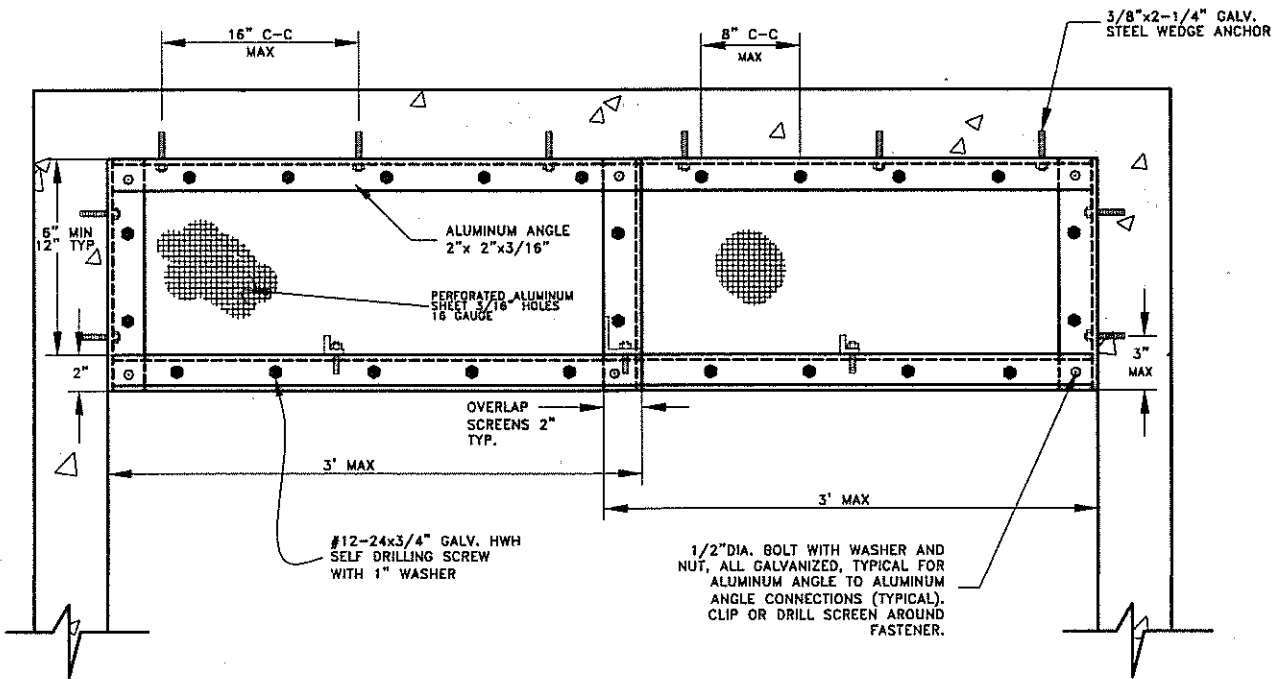
## CATCH BASIN INSERT (ELEVATION)

### CITY OF PASADENA - DEPARTMENT OF PUBLIC WORKS

DRAWN BY: <b>JOHN SAMARIN</b>	<h1 style="text-align: center;">FABRICATION AND INSTALLATION OF CATCH BASIN INSERTS</h1>	REVISION: 1	UNITS: ENG.
CHECKED BY: <b>YANNIE WU</b>		STANDARD PLAN:	
SUBMITTED BY <b>STEPHEN WALKER</b>	APPROVED BY:  <b>STEVE D. WIGHT</b> ASSISTANT CITY ENGINEER RCE NO. 4660 EXPIRES JUNE 30, 2008	<h1 style="text-align: center;">S-115</h1> <p style="text-align: center;">SHEET 1 OF 5</p> <p style="text-align: center;">3-115-1-REV1.DWG 04/03/08</p>	
	DATE <b>4/3/2008</b>		



**SECTION**



**DEFLECTOR DETAIL  
(PLAN VIEW)**

**CITY OF PASADENA - DEPARTMENT OF PUBLIC WORKS**

DRAWN BY:  
**JOHN SAMARIN**

CHECKED BY:  
**YANNIE WU**

SUBMITTED BY:  
**STEPHEN WALKER**

**FABRICATION AND  
INSTALLATION OF  
CATCH BASIN INSERTS**

APPROVED BY:  
*Stu D. Wight*  
**ASSISTANT CITY ENGINEER RCE NO. 48650 EXPIRES JUNE 30, 2008**

REVISION: **1** UNITS: **ENG.**

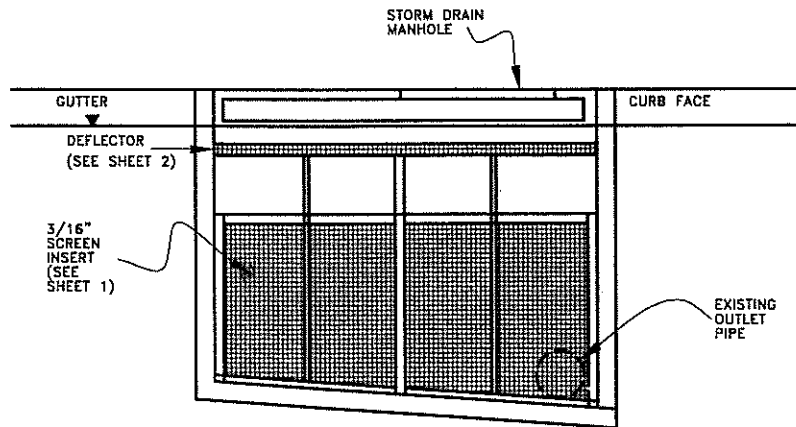
STANDARD PLAN:

**S-115**

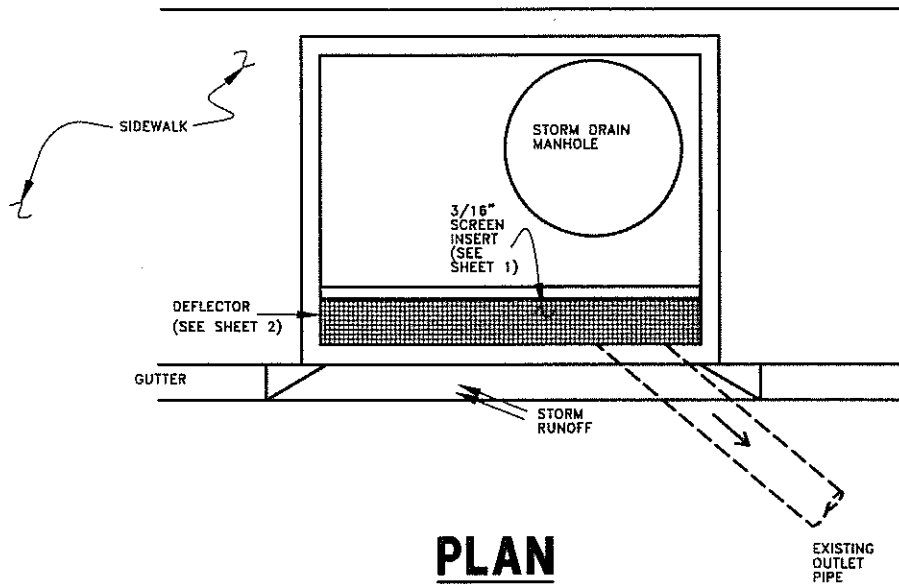
**SHEET 2 OF 5**

*4/3/2008*  
DATE

3-115-2-REV1.DWG 04/03/08



## PROFILE



## PLAN

### TYPE 1 INSERT LOCATION

NOTE: FOR CURB OPENING WIDTHS EQUAL TO OR LESS THAN 10 FEET, OR AS APPROVED BY THE ENGINEER.

#### CITY OF PASADENA - DEPARTMENT OF PUBLIC WORKS

DRAWN BY:  
JOHN SAMARIN

CHECKED BY:  
YANNIE WU

SUBMITTED BY  
STEPHEN WALKER

APPROVED BY:

*St. A. Will*  
ASSISTANT CITY ENGINEER RCE NO. 46650 EXPIRES JUNE 30, 2008

### FABRICATION AND INSTALLATION OF CATCH BASIN INSERTS

4/3/2008  
DATE

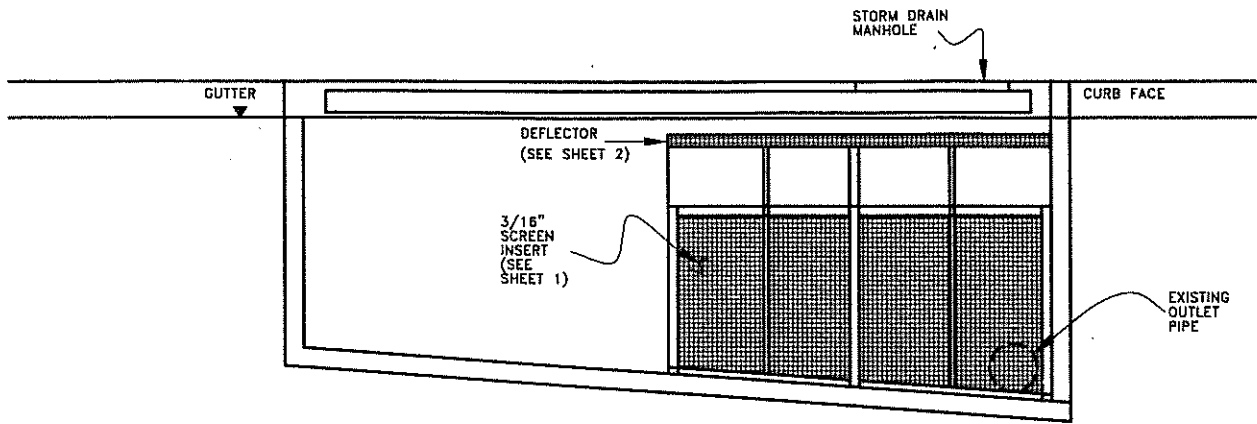
REVISION: 1 UNITS: ENG.

STANDARD PLAN:

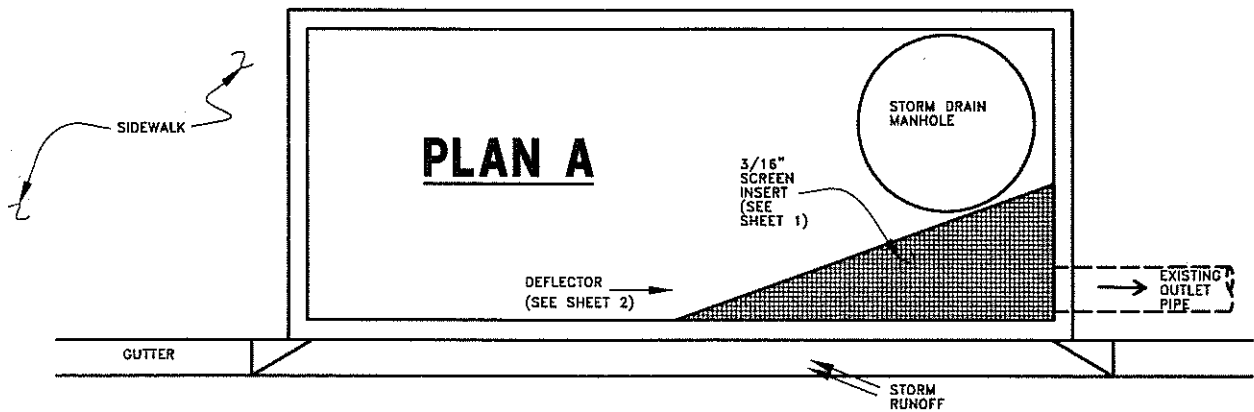
**S-115**

SHEET 3 OF 5

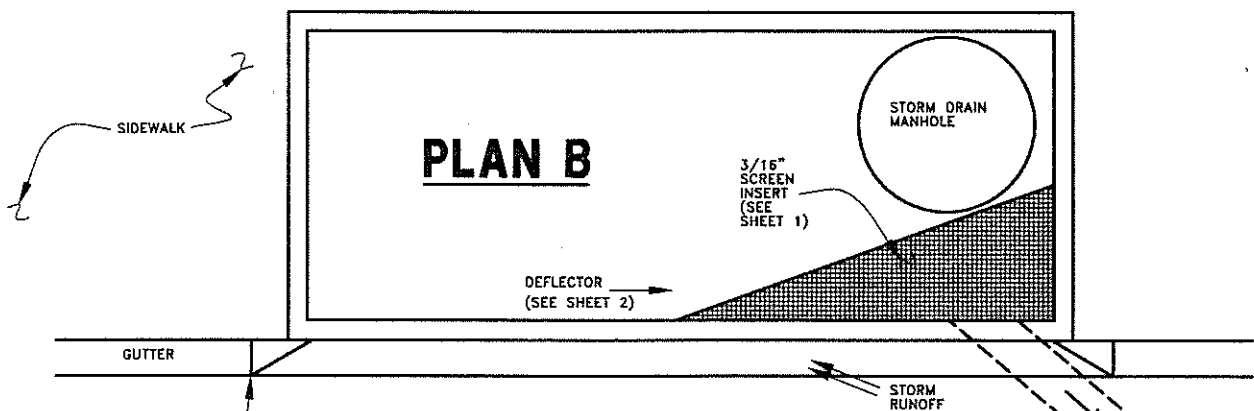
3-115-3-REV1.DWG 04/03/08



**PROFILE**



**PLAN A**



**PLAN B**

NOTE: FOR CURB OPENING WIDTHS MORE THAN 10 FEET, OR AS APPROVED BY THE ENGINEER.

**TYPE 2 INSERT LOCATION**

**CITY OF PASADENA - DEPARTMENT OF PUBLIC WORKS**

DRAWN BY:  
**JOHN SAMARIN**

CHECKED BY:  
**YANNIE WU**

SUBMITTED BY  
**STEPHEN WALKER**

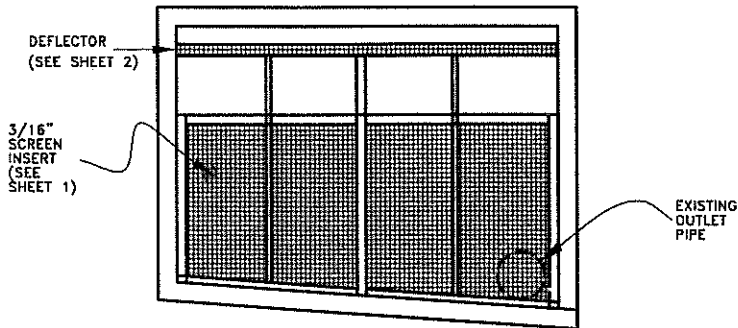
**FABRICATION AND  
INSTALLATION OF  
CATCH BASIN INSERTS**

APPROVED BY:  
*Stu d. Wight*  
ASSISTANT CITY ENGINEER RCE NO. 48660 EXPIRES JUNE 30, 2008

DATE  
**4/3/2008**

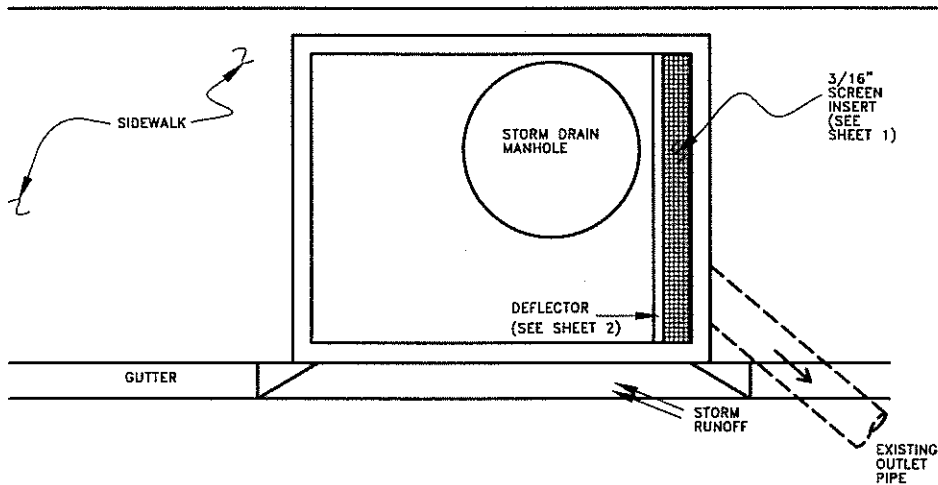
REVISION: **1** UNITS: **ENG.**

STANDARD PLAN:  
**S-115**  
SHEET 4 OF 5  
S-115-4-REV1.DWG 04/03/08



## PROFILE

(SEE SHEET 2 FOR DETAIL)



## PLAN

### TYPE 3 INSERT LOCATION

#### CITY OF PASADENA - DEPARTMENT OF PUBLIC WORKS

DRAWN BY:  
JOHN SAMARIN

CHECKED BY:  
YANNIE WU

SUBMITTED BY:  
STEPHEN WALKER

## FABRICATION AND INSTALLATION OF CATCH BASIN INSERTS

APPROVED BY:

*St. A. Wright*  
ASSISTANT CITY ENGINEER RCE NO. 4860 EXPIRES JUNE 30, 2008

4/3/2008  
DATE

REVISION: 1 UNITS: ENG.

STANDARD PLAN:

# S-115

SHEET 5 OF 5

S-115-S-REV1.DWG 04/05/08