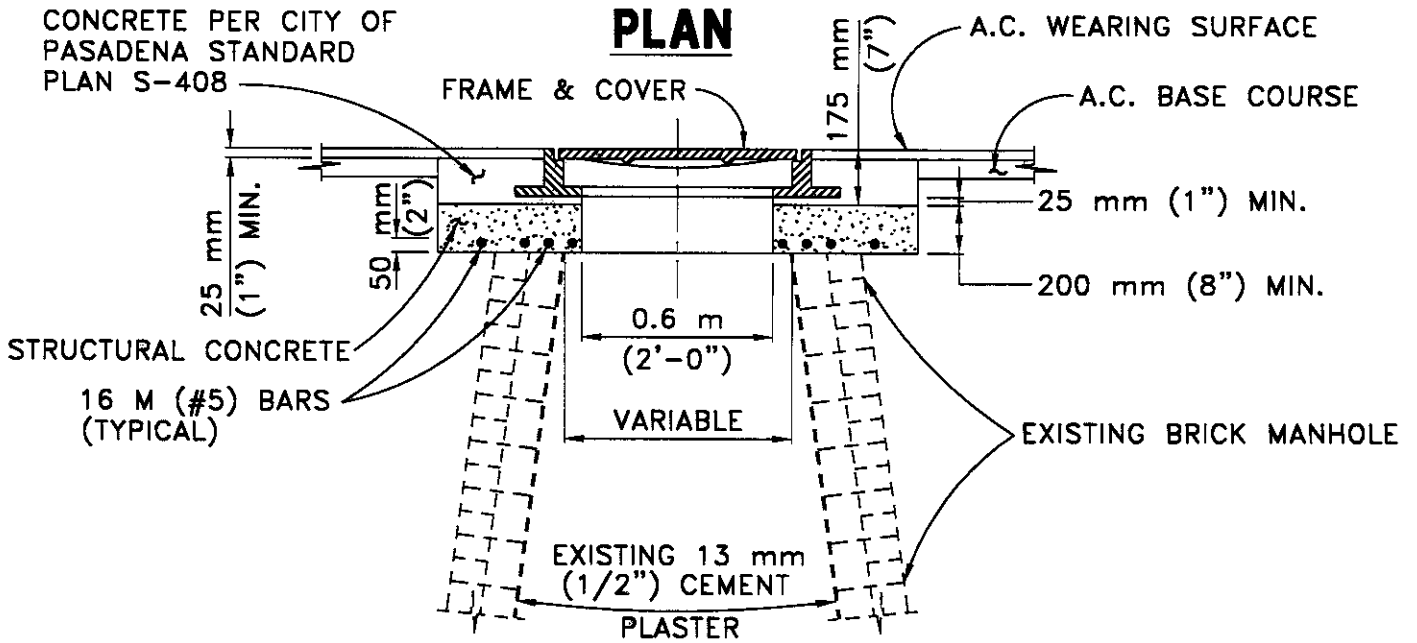


PLAN



SECTION A-A

NOTE:

1. THIS STANDARD IS TO BE USED WHEN MANHOLE INSIDE DIAMETER EXCEEDS 0.725 m (2'-4") UNDER FRAME.
2. REMOVE EXIST. RAILS, RUBBLE, AND FRAME & COVER. CONSTRUCT 200 mm (8") MIN. THICKNESS TOP DECK & REINFORCE AS SHOWN. REUSE FRAME & COVER (AS DIRECTED).

CITY OF PASADENA - PUBLIC WORKS & TRANSPORTATION DEPARTMENT

DRAWN BY: DAVID PHAN	MANHOLE TOP RECONSTRUCTION	REVISION:	UNITS:
		ONE	DUAL
CHECKED BY: JAMES LLOYD	 APPROVED BY: CITY ENGINEER	STANDARD PLAN:	
SUBMITTED BY: JAMES VALENTINE		S-384	SHEET 1 OF 1
	RCE NO. 38689 EXPIRES MARCH 31, 2001	2-28-2001	DATE
		<small>S384-1-L.DWG</small>	<small>MARCH 2001</small>