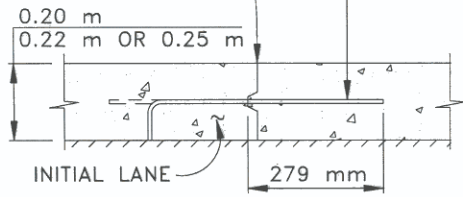


6.3 mm RAD. TRANSVERSE
13 mm RAD. LONGITUDINAL
FOR INITIAL LANE & 6.3 mm
RAD. LONGITUDINAL FOR
ADJACENT LANE

(ALL 90° BENDS
SHALL BE ON A RAD.
OF APPROX. 38 mm)
#4 x 0.6 m TIE BAR

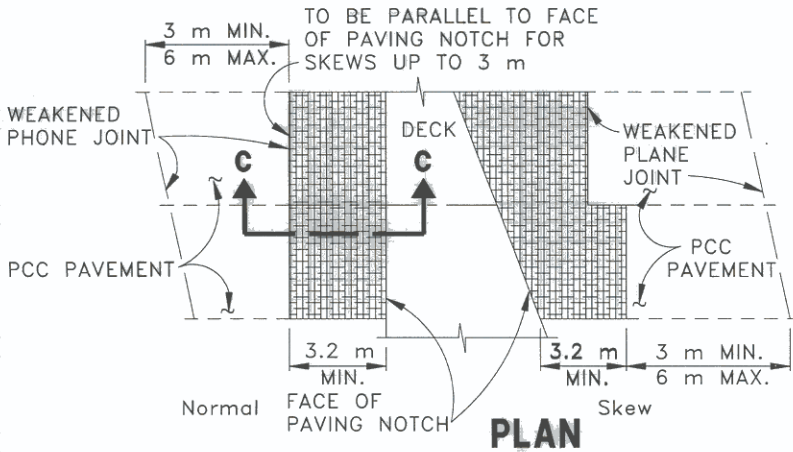


TIE BAR

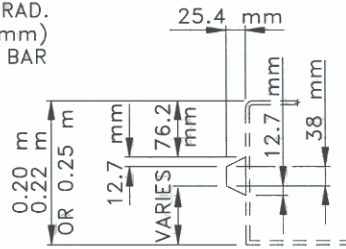
**Transverse, or Optional Longitudinal
Contact Joint with Keyway**

TRANSVERSE CONTACT JOINT WITH KEYWAY TO BE PLACE
WHERE ORDERED BY ENGINEER TIE BAR TO BE PLACED
IN THE MIDDLE 1/3 OF THE SLAB

NOTE: SPACING OF WEAKENED PLANE JOINTS SHALL BE
SUCCESSIVELY 4 m, 4.5 m, 5.8 m, 3.7 m AND REPEAT.

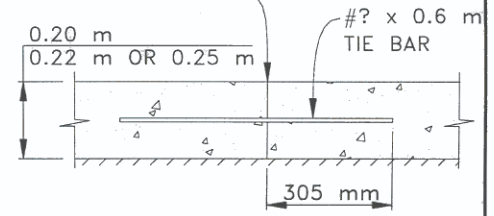


PLAN



**DETAIL OF METAL OR
INSERT TO BE PLACED
ON SIDE FORMS**

13 mm RAD. LONGITUDINAL
FOR INITIAL LANE & 6.3 mm
RAD. LONGITUDINAL FOR
ADJACENT LANE

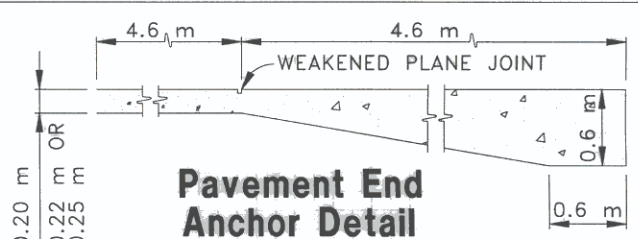


**SECTION B-B
TIE BAR**

**Longitudinal Contact
Joint without Keyway**

TIE BAR TO BE PLACED IN THE
MIDDLE 1/3 OF THE SLAB

134-0



**Pavement End
Anchor Detail**

TO BE CONSTRUCTED WHEN
ORDERED BY ENGINEER

**SECTION C-C
DETAIL OF PAVEMENT
REINFORCEMENT
AT STRUCTURE APPROACHES**

VOID

**SEE APWA STANDARD PLAN 134-0
CALTRANS A35A 1992**

CITY OF PASADENA - PUBLIC WORKS & TRANSPORTATION DEPARTMENT

DRAWN BY:
DAVID PHAN

CHECKED BY:
GIL WEISS

SUBMITTED BY:
JAMES VALENTINE

**CONCRETE PAVING
DETAILS**

APPROVED BY:

CITY ENGINEER RCE NO. 13716 EXPIRES MARCH 31, 1997

REVISION: 0 UNITS: METRIC

STANDARD PLAN:
S-409

SHEET 1 OF 1
S409-1-0.DWG 04\20\96

DATE