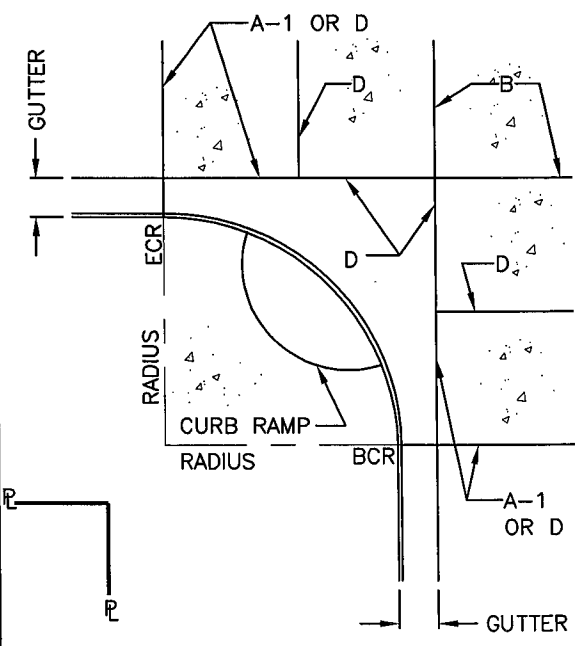


SPANDREL JOINTING FOR CURB RADIUS GREATER THAN OR EQUAL TO 20 FEET.



SPANDREL JOINTING FOR CURB RADIUS LESS THAN 20 FEET.

CITY OF PASADENA - DEPARTMENT OF PUBLIC WORKS

DRAWN BY:
MARTHA SANCHEZ

CHECKED BY:
YANNIE WU

SUBMITTED BY:
BOB GARDNER

PCC PAVEMENT JOINTING AND DETAILS

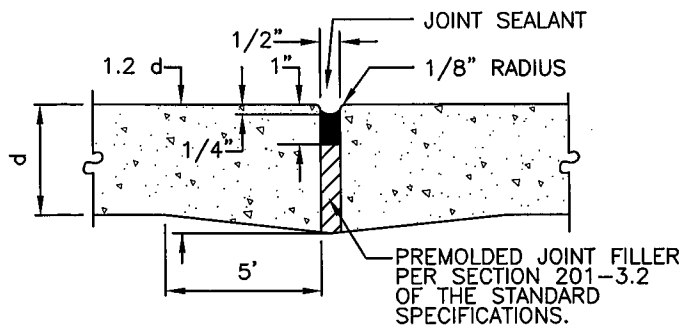
APPROVED BY:
Daniel A. R.
CITY ENGINEER RCE NO. 38689 EXPIRES MARCH 31, 2007

5/25/2005
DATE

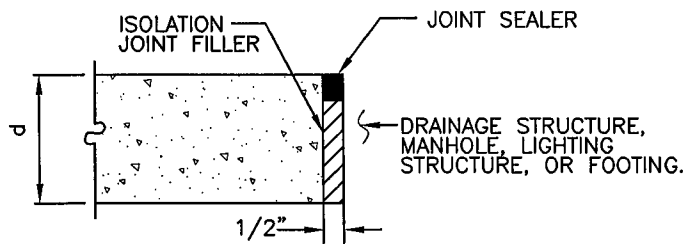
REVISION: 0 UNITS: ENG.

STANDARD PLAN:
S-422

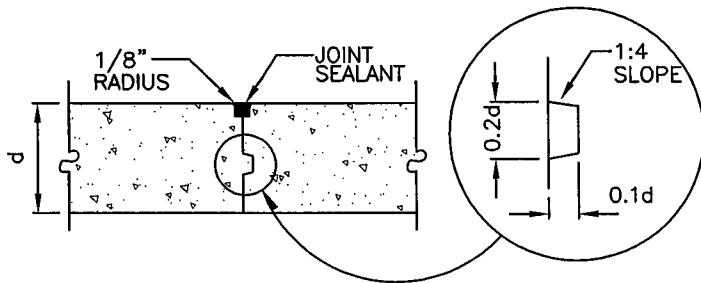
SHEET 1 OF 3
S-422-1-0.DWG 05/23/05



TYPE A-1

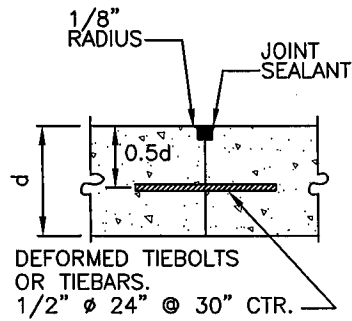


**TYPE A-2
UNDOWELED ISOLATION JOINT
ADJACENT TO FIXED STRUCTURES**

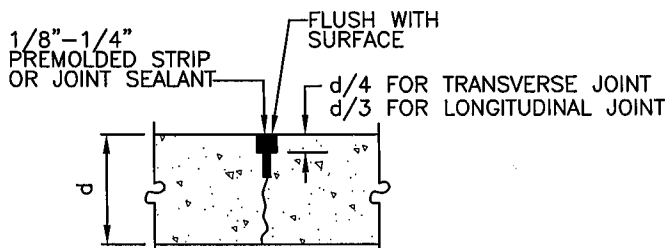


**TYPE B
LONGITUDINAL
CONSTRUCTION JOINT**

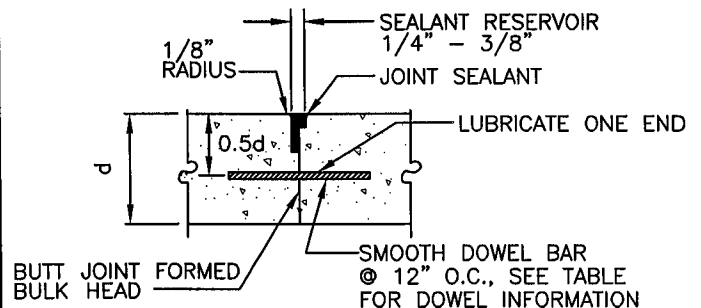
**KEYWAYS
FOR TYPE B
CONSTRUCTION JOINT**



**TYPE C
TIED BUTT
LONGITUDINAL
CONSTRUCTION JOINT**



**TYPE D
SAWED OR PREMOLDED STRIP
LONGITUDINAL OR TRANSVERSE JOINT**



**TYPE E
PLANNED TRANSVERSE
CONSTRUCTION JOINT**

DOWEL INFORMATION FOR CONSTRUCTION JOINTS

SLAB DEPTH, (INCHES)	DOWEL DIAMETER, (INCHES)	DOWEL EMBEDMENT, (INCHES)	TOTAL DOWEL LENGTH (INCHES)
6.0	3/4	5	14
7.0	1	6	16
8.0	1-1/4	8	17

NOTES:

- (1) "d" EQUALS MINIMUM PAVEMENT THICKNESS; 6 INCHES FOR ALLEYS AND 8 INCHES FOR STREETS.
- (2) ALL JOINT SEALANT SHALL BE TYPE "A" PER SECTION 201-3.4 OF THE STANDARD SPECIFICATIONS.

CITY OF PASADENA - DEPARTMENT OF PUBLIC WORKS

DRAWN BY:
MARTHA SANCHEZ

CHECKED BY:
YANNIE WU

SUBMITTED BY:
BOB GARDNER

**PCC PAVEMENT
JOINTING AND DETAILS**

APPROVED BY:
Daniel A. R.
CITY ENGINEER RCE NO. 38689 EXPIRES MARCH 31, 2007

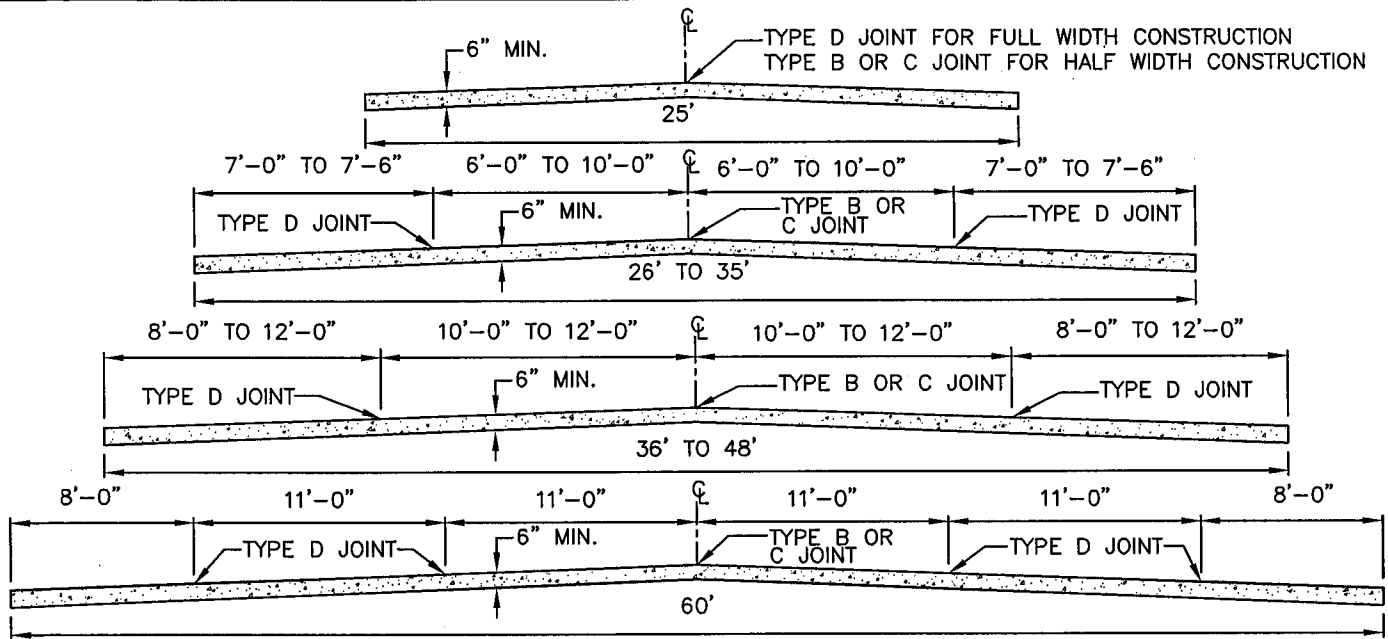
5/25/2005
DATE

REVISION: 0 UNITS: ENG.

STANDARD PLAN:

S-422

SHEET 2 OF 3
S-422-2-0.DWG 05/23/05



PAVEMENT CROSS SECTIONS

NOTES FOR JOINTS:

1. LONGITUDINAL JOINT SPACING SHALL BE MAXIMUM 12.5 FEET. TYPE C JOINT SHALL BE USED IF THERE IS NO CURB.
2. TRANSVERSE JOINTS SHALL BE SPACED AT REGULAR INTERVALS OF 15 FEET OR LESS.
3. ALL JOINTS SHALL BE CONTINUOUS THROUGH THE CURB AND GUTTER EXCEPT WITHIN A CURB RETURN, AND HAVE A DEPTH EQUAL TO 1/4 OF THE PAVEMENT THICKNESS. EXPANSION JOINT FILLER MUST BE FULL DEPTH AND EXTEND THROUGH THE CURB.
4. THE MINIMUM LENGTH OF ANY TRANSVERSE JOINT SHALL BE 1.5 FEET. THE CENTRAL ANGLE OF THE TRANSVERSE JOINT SHALL BE 60° OR LARGER.
5. PLACE JOINTS TO MEET ANY UTILITY OR DRAINAGE STRUCTURES IN PAVEMENT AREAS, PARTICULARLY AT INTERSECTIONS, AS SHOWN ON PLAN ON SHEET 1 OF THIS DRAWING.

NOTES FOR PCC PAVEMENT:

1. THE CONCRETE CLASS USED SHALL BE 520-A-2500 FOR REGULAR STRENGTH, AND 660-A-4000 FOR HIGH EARLY STRENGTH.
2. THE MAXIMUM SLUMP SIZE ALLOWED SHALL BE 3 INCHES FOR REGULAR STRENGTH, AND 4 INCHES FOR HIGH EARLY STRENGTH.
3. THE MINIMUM THICKNESS OF PCC PAVEMENT SHALL BE 6 INCHES FOR ALLEYS AND 8 INCHES FOR STREET.
4. THE AGGREGATE BASE UNDER THE PCC PAVEMENT SHALL HAVE A MINIMUM THICKNESS OF 4 INCHES AT 95% RELATIVE COMPACTION.
5. THE UNDERLYING NATIVE SOIL SHALL HAVE A MINIMUM THICKNESS OF 6 INCHES AT 90% RELATIVE COMPACTION. PRIOR TO POURING OF CONCRETE, SUBGRADE SHALL BE DAMPENED AS APPROVED BY THE ENGINEER.
6. THE MEMBRANE CURING COMPOUND USED SHALL BE TYPE 1-D (CLEAR OR TRANSLUCENT WITH FUGITIVE DYE) APPLIED PER SECTION 201-4.1.2 OF THE STANDARD SPECIFICATIONS.
7. NO TRAFFIC OR EQUIPMENT OPERATIONS SHALL BE ALLOWED ON ANY NEWLY POURED CONCRETE FOR SEVEN (7) DAYS FOR REGULAR STRENGTH, AND FOR THREE (3) DAYS FOR HIGH EARLY STRENGTH.

CITY OF PASADENA - DEPARTMENT OF PUBLIC WORKS

DRAWN BY: MARTHA SANCHEZ	PCC PAVEMENT JOINTING AND DETAILS	REVISION: 0	UNITS: ENG
		STANDARD PLAN: S-422	
CHECKED BY: YANNIE WU	APPROVED BY: <i>Daniel A. Rj</i>	5/25/2005 DATE	
SUBMITTED BY: BOB GARDNER	CITY ENGINEER		
RCE NO. 38689 EXPIRES MARCH 31, 2007		SHEET 3 OF 3 S-422-3-0.DWG 05/23/05	