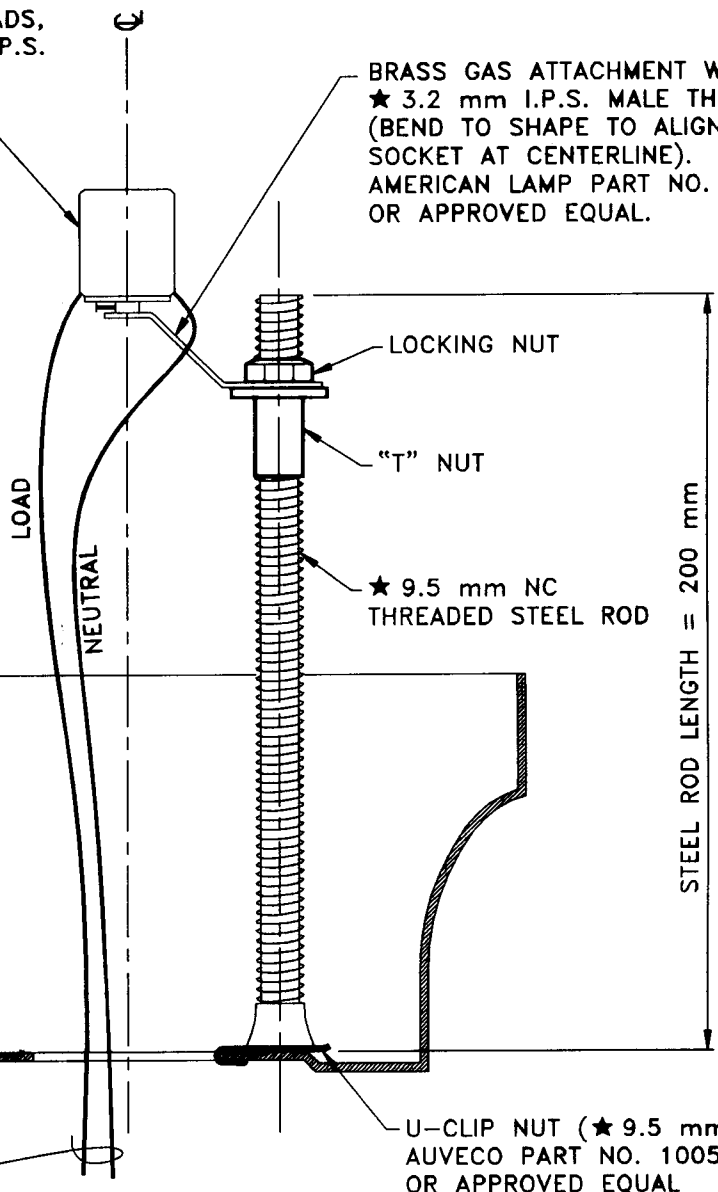


PORCELAIN SOCKET WITH #14 AWG,  
200°C 229 mm STRANDED COPPER LEADS,  
INSULATING WASHER AND ★ 3.2 mm I.P.S.  
H.D. DIE CAST CAP.  
LEVITON NO. 70036 (MODIFIED)  
OR APPROVED EQUAL.

BRASS GAS ATTACHMENT WITH  
★ 3.2 mm I.P.S. MALE THREAD  
(BEND TO SHAPE TO ALIGN  
SOCKET AT CENTERLINE).  
AMERICAN LAMP PART NO. B-594  
OR APPROVED EQUAL.



GLOBE HOLDER  
SEE CITY OF PASADENA  
STANDARD PLAN S-914,  
SHEET 1.

LAMP LEGS (120 VOLT MULTIPLE)

U-CLIP NUT (★ 9.5 mm)  
AUVECO PART NO. 10054  
OR APPROVED EQUAL

★ - EXACT CONVERSION (ENGLISH DIMENSION WILL REMAIN).

**CITY OF PASADENA - PUBLIC WORKS & TRANSPORTATION DEPARTMENT**

DRAWN BY:  
**BANG CHAU**

CHECKED BY:  
**CATHY CHANG**

SUBMITTED BY:  
**JIM VALENTINE**

**INCANDESCENT SOCKET AND  
SOCKET MOUNTING HARDWARE  
(For Post Top Poles)**

APPROVED BY:  
*William D. Setz*  
CITY ENGINEER RCE NO. 13716 EXPIRES MARCH 31, 1997

DATE  
*1/4/96*

REVISION:  
1

UNITS:  
METRIC

STANDARD PLAN:  
**S-915**

SHEET 1 OF 1  
S915-1-L.DVG 03/25/96