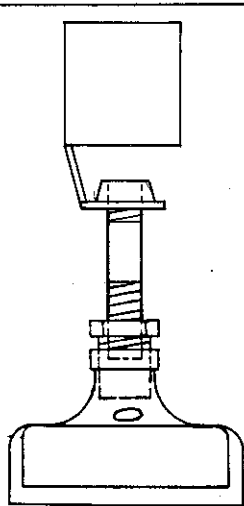
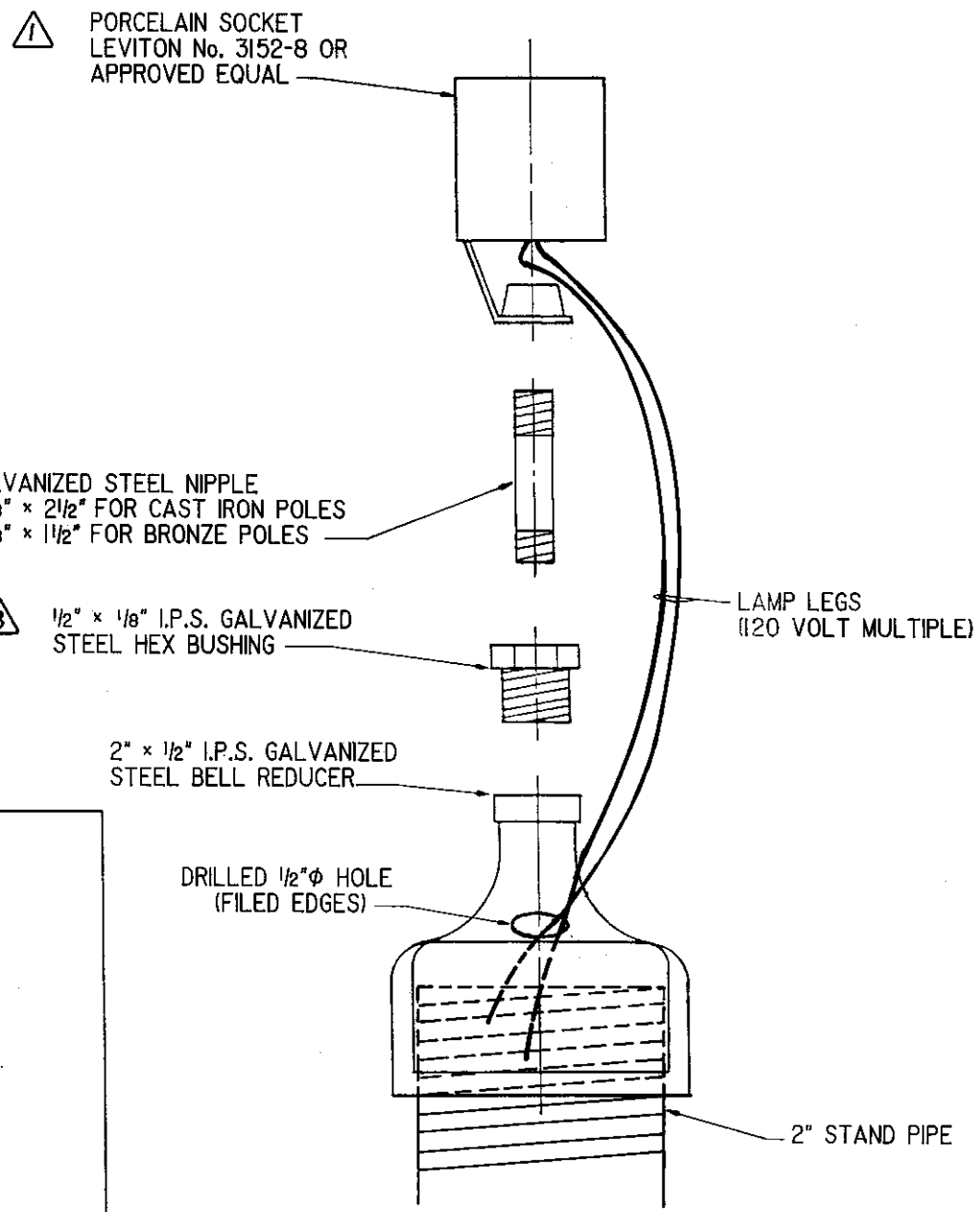


| DATE | BY | REVISION | APVD. | DATE | BY | REVISION | APVD. |
|---------|-------------|----------|-------|---------|-------------|--|-------|
| 6/27/90 | [Signature] | | WTS | 6/27/90 | [Signature] | | WTS |
| 6/27/90 | [Signature] | 1 | WTS | | | CHANGED HOLLOW 3/8" / 27 TPI HEADED STEEL NIPPLE TO 1/2" GALVANIZED STEEL NIPPLE | |
| | | 2 | | | | CHANGED HEX BUSHING FROM 3/8" TO 1/2" | WTS |



ASSEMBLED UNIT



NOTE:
1. ALL MACHINING TO BE PERFORMED BY THE CONTRACTOR.

CITY OF PASADENA - PUBLIC WORKS AND TRANSPORTATION DEPARTMENT

| | |
|---------------|---------------------|
| DRAWN BY: | B. CHAU |
| CHECKED BY: | B. BETTISON |
| SUBMITTED BY: | J. VALENTINE |
| DATE: | JAN. 5, 1990 |

INCANDESCENT SOCKET and SOCKET MOUNTING HARDWARE for 2" STAND PIPE SUPPORTED POST-TOP POLES

APPROVED BY: *David E. Bankart* 2/6/90
CITY ENGINEER / TRANSPORTATION MANAGER DATE

| | |
|-------------|---------------|
| SCALE: | NONE |
| DRAWING NO. | S-916 |
| SHT. | 1 OF 1 |