

60.3 mm OD GALVANIZED PIPE AND TENON
(2.375")

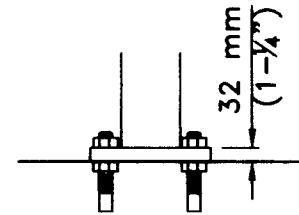
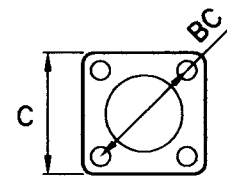
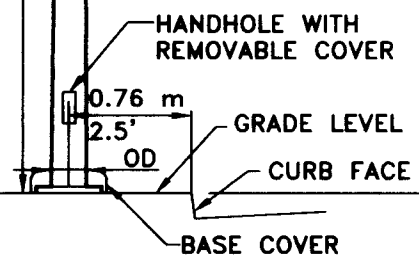
☪ LUMINAIRE
HORIZONTAL BURNING LUMINAIRE - SEE CITY OF PASADENA STANDARD PLAN S-950

LUMINAIRE: MAXIMUM WEIGHT = 30.4 kg (67 lbs.)

PROJECTED AREA = 0.31 m² (3.3 ft.²)

- NOTES:**
1. FOR GROUNDING DETAILS, SEE CITY OF PASADENA STANDARD PLAN S-906.
 2. FOR FOUNDATION DETAILS, SEE CITY OF PASADENA STANDARD PLAN S-972.
 3. LOCATE HANDHOLE ON SIDE OF STANDARD AWAY FROM APPROACHING TRAFFIC.
 4. POLE SHALL BE GALVANIZED UNLESS OTHERWISE NOTED.
 5. UNLESS OTHERWISE NOTED,
A = 1.8 m (6') FOR MH = 9.1 m (30')
A = 2.4 m (8') FOR MH = 10.7 m (35')
 6. CAP WITH GALVANIZED STEEL PLATE. IF INDICATED ON PLAN, PROVIDE BRACKET FOR NEW OR FUTURE TRAFFIC SIGNAL MAST ARM. POLE SIZE AND GAGE SHALL COMPLY WITH CITY OF PASADENA STANDARD PLAN S-960 AND MANUFACTURER'S DRAWING.

MANUFACTURER (OR APPROVED EQUAL)		CITY DESIGN No.	MH	A	B	OD	POLE SIZE			
AMERON	PUMCO						MINIMUM GAGE		BC	C
						ST. LT. ONLY	ST. LT. & T.S.M.A.			
J266	LD-10121-E	26816	7.6 m 26'	1.8 m 6'	8.7 m 28'-6"	191 mm x 83 mm 7.52" x 3.26"	7	-	292 mm 11-1/2"	292 mm 11-1/2"
J306	LD-10121-J	30818	9.1 m 30'	1.8 m 6'	10.2 m 33'-6"	209 mm x 83 mm 8.22" x 3.26"	7	SEE NOTE 5	292 mm 11-1/2"	292 mm 11-1/2"
J308	LD-10121-K	30818	9.1 m 30'	2.4 m 8'	10.8 m 35'-6"	209 mm x 83 mm 8.22" x 3.26"	7		292 mm 11-1/2"	292 mm 11-1/2"
J366	LD-10121-N	36816	10.7 m 35'	1.8 m 6'	11.6 m 38'	226 mm x 83 mm 8.89" x 3.26"	7		292 mm 11-1/2"	324 mm 12-3/4"
J368	LD-10121-P	36818	10.7 m 35'	2.4 m 8'	12.2 m 40'	226 mm x 83 mm 8.89" x 3.26"	7		292 mm 11-1/2"	324 mm 12-3/4"



★ - EXACT CONVERSION (ENGLISH DIMENSION WILL REMAIN).

CITY OF PASADENA - PUBLIC WORKS DEPARTMENT

DRAWN BY:
MARCOS TIEMANN

CHECKED BY:
ARNOLD DICHOSA

SUBMITTED BY:
JIM VALENTINE

**★ ELECTROLIER TYPE II
(TAPERED, ROUND, STEEL)**

APPROVED BY:
David A. Rice
CITY ENGINEER

APPROVED BY:
4/12/2004
DATE

RICE NO. 38607 EXPIRES MARCH 31, 2005

REVISION: 2 UNIT: DUAL

STANDARD PLAN:
S-921

SHEET 1 OF 1
S921-1-REV.DWG 02/05/04