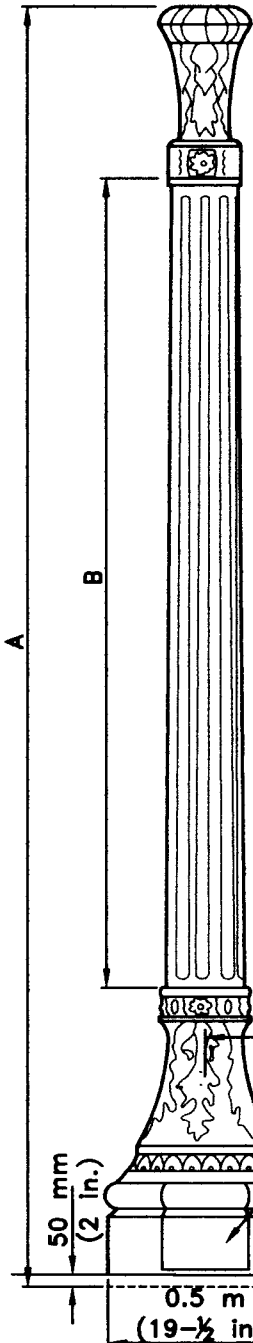
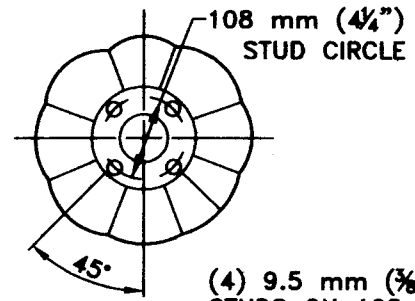
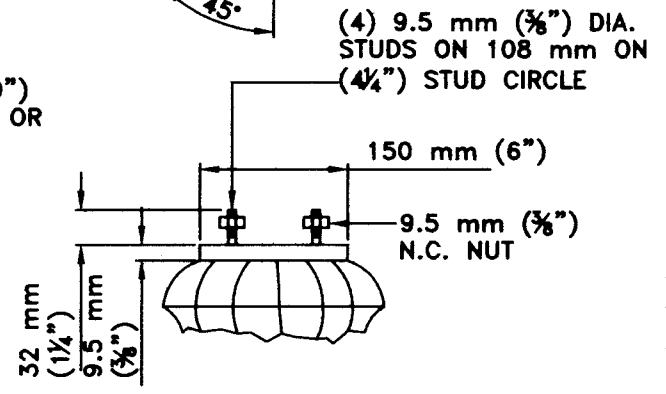


MANUFACTURER		DIMENSIONS ±		
AMERON	FUMCO	MH	A	B
20CT12	134B	SEE NOTES 1 AND 2 BELOW	3.9 m (12' - 8")	2.6 m (8' - 6")
20CT15	134A	SEE NOTES 1 THRU 3 BELOW	4.6 m (15' - 0")	3.3 m (10' - 11")

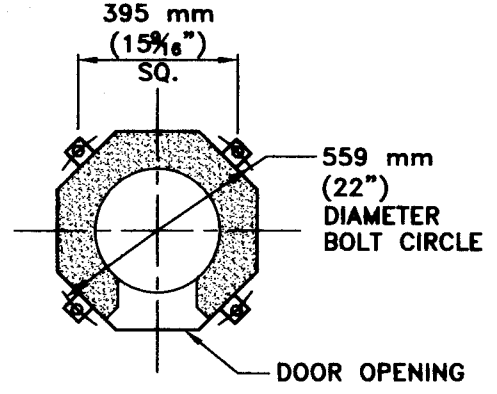


NOTES:

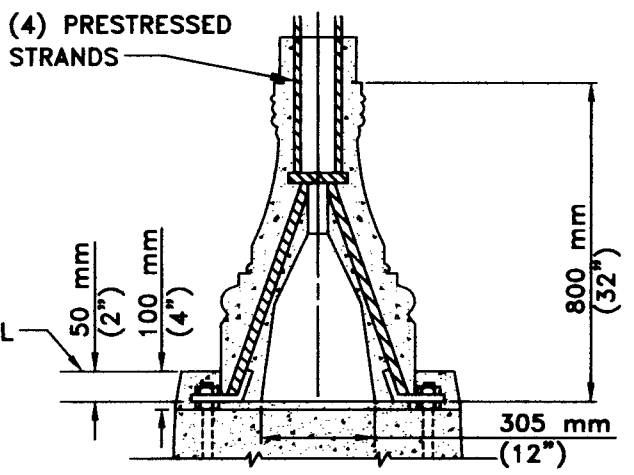
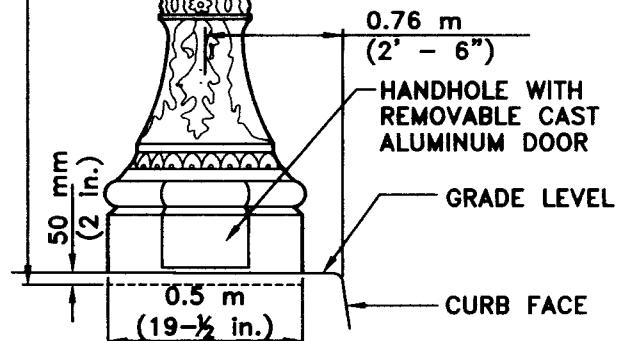
1. $MH = A + 305\text{mm}$ (1'-0") USING STANDARD ACORN OR SPHERE GLOBE.
2. $MH = A + 0.46\text{ m}$ (1' - 6") USING KING LUMINAIRE LANTERN FIXTURE #K56
3. $MH = A + 0.61\text{ m}$ (2' - 0") USING KING LUMINAIRE LANTERN FIXTURE #K118
4. FOR GROUNDING DETAILS, SEE CITY OF PASADENA STANDARD PLAN S-906.
5. FOR FOUNDATION DETAILS, SEE CITY OF PASADENA STANDARD PLAN S-972.
6. LOCATE HANDHOLE ON SIDE OF STANDARD AWAY FROM APPROACHING TRAFFIC.



TOP OF POLE DETAIL



BASE PLAN



★ - EXACT CONVERSION (ENGLISH DIMENSION WILL REMAIN).

CITY OF PASADENA - PUBLIC WORKS DEPARTMENT

DRAWN BY:
MARCOS TIEMANN

CHECKED BY:
ARNOLD DICHOZA

SUBMITTED BY:
JIM VALENTINE

★ **ELECTROLIER TYPE PT-2 (PRESTRESSED CONCRETE)**

APPROVED BY:
Daniel A. Rice
CITY ENGINEER

RICE NO. 38689 EXPIRES MARCH 31, 2005

4/12/2004
DATE

REVISION: 2
UNITS: DUAL

STANDARD PLAN:
S-931

SHEET 1 OF 1

3/22 - REVISED 8/18/04