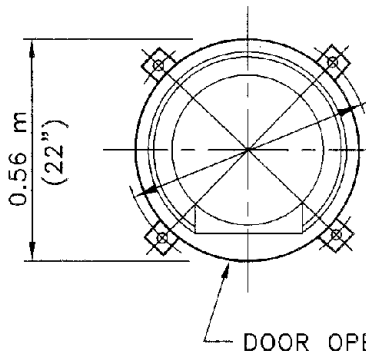
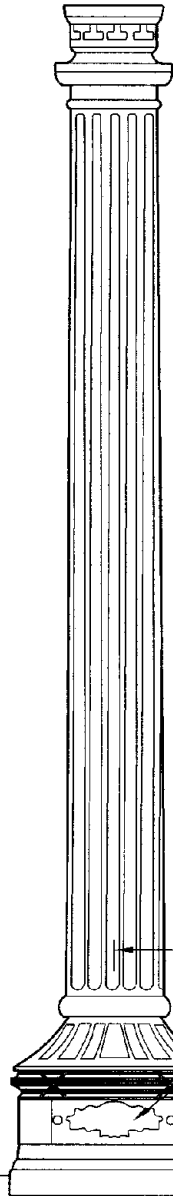
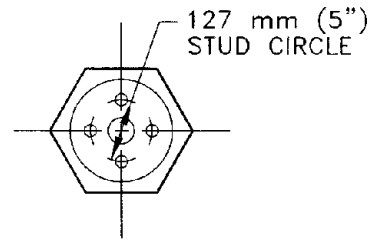


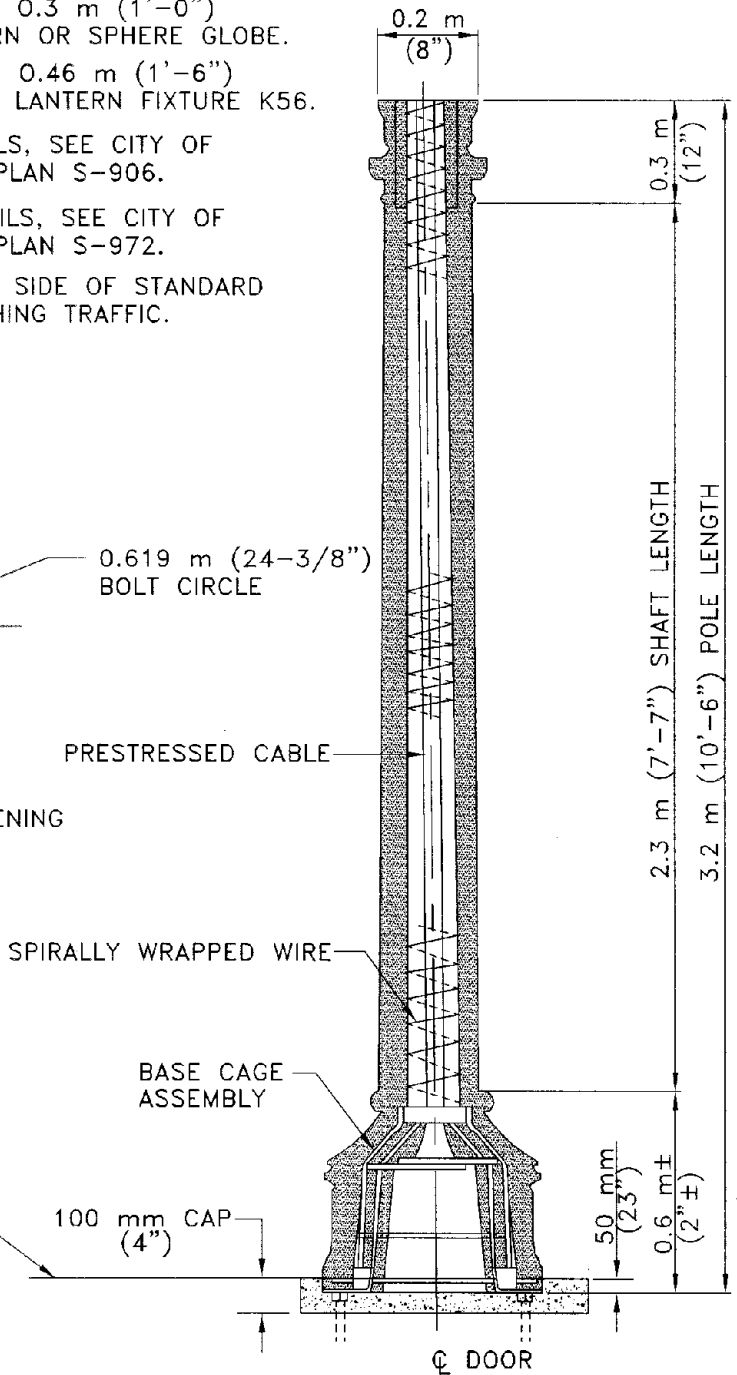
MANUFACTURER		MH
AMERON	PUMCO	
23CT11	800CL	SEE NOTES 1 AND 2 BELOW

**NOTES:**

1. MH  $\approx$  POLE LENGTH + 0.3 m (1'-0")  
USING STANDARD ACORN OR SPHERE GLOBE.
2. MH  $\sim$  POLE LENGTH + 0.46 m (1'-6")  
USING KING LUMINAIRE LANTERN FIXTURE K56.
3. FOR GROUNDING DETAILS, SEE CITY OF PASADENA STANDARD PLAN S-906.
4. FOR FOUNDATION DETAILS, SEE CITY OF PASADENA STANDARD PLAN S-972.
5. LOCATE HANDHOLE ON SIDE OF STANDARD AWAY FROM APPROACHING TRAFFIC.



**BASE PLAN**



**CITY OF PASADENA - PUBLIC WORKS & TRANSPORTATION DEPARTMENT**

DRAWN BY:  
ARNOLD DICHOSA

CHECKED BY:  
CATHY CHANG

SUBMITTED BY:  
JIM VALENTINE

**ELECTROLIER TYPE PT-3  
(PRESTRESSED CONCRETE)**

APPROVED BY:  
*Daniel A. R...*  
CITY ENGINEER RCE NO. 38689 EXPIRES MARCH 31, 2005

01/24/2003  
DATE

REVISION: 2  
UNITS: DUAL

STANDARD PLAN:

**S-932**

SHEET 1 OF 1