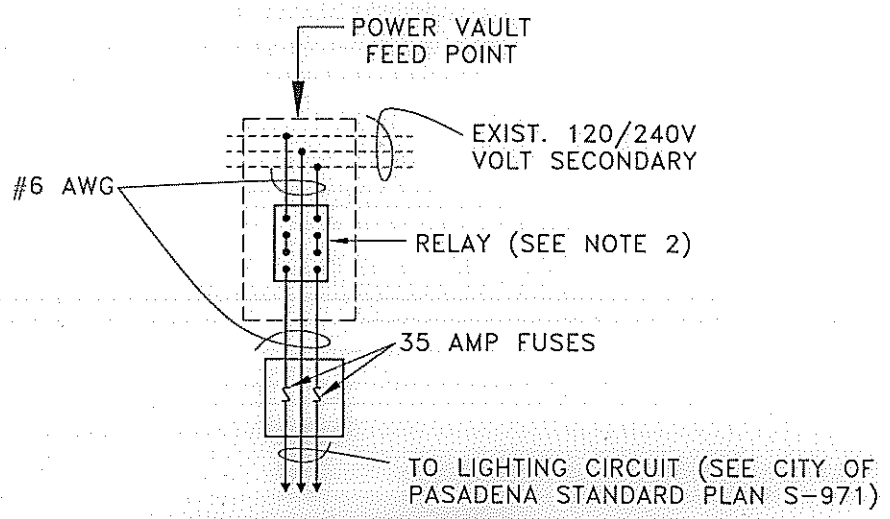


PHOTOELECTRIC CONTROL
TYPICAL CIRCUIT DIAGRAM



TIME CLOCK CONTROL
TYPICAL CIRCUIT DIAGRAM

NOTES:

1. STREET LIGHT REMOTE CONTROL OF OUTDOOR CIRCUIT (R.C.O.C.) MULTIPLE RELAY WITH PHOTOELECTRIC CELL, MANUFACTURED BY SEQUOIA LIGHTING CORPORATION MODEL #UKC-004-753-01, 60 AMPS LOAD RATING, OR MODEL #UKC-004-753-02, 100 AMPS LOAD RATING, OR APPROVED EQUAL. CONTRACTOR SHALL INSTALL UNIT ON STREET LIGHT POLE. UNIT ON POWER POLE WILL BE INSTALLED BY OTHERS.
2. STREET LIGHT REMOTE CONTROL OF OUTDOOR CIRCUIT (R.C.O.C.) MULTIPLE RELAY WITH DIGITAL ASTRONOMIC TIME CLOCK, 40 AMPS LOAD RATING, MANUFACTURED BY TORK, MODEL #EWZ201 (2-CHANNEL), OR APPROVED EQUAL. UNIT WILL BE INSTALLED IN POWER VAULT BY OTHERS.
3. SEE STANDARD LEGEND/GENERAL NOTES SHEET OF PLAN FOR ADDITIONAL FEED POINT REQUIREMENTS.

CITY OF PASADENA - DEPARTMENT OF PUBIC WORKS

DRAWN BY: SANDRA HERNANDEZ	<p>MULTIPLE RELAY FOR POST TOP LIGHTING SYSTEM</p>	REVISION: 4	UNITS: DUAL
CHECKED BY: ARNOLD DICHOSA		STANDARD PLAN: S-975	
SUBMITTED BY: BONNIE HOPKINS		APPROVED BY: <i>Daniel A. B.</i> CITY ENGINEER	8/24/2010 DATE
		RCE NO. 38689. EXPIRES MARCH 31, 2011	