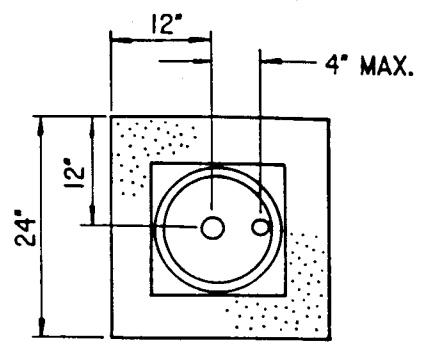
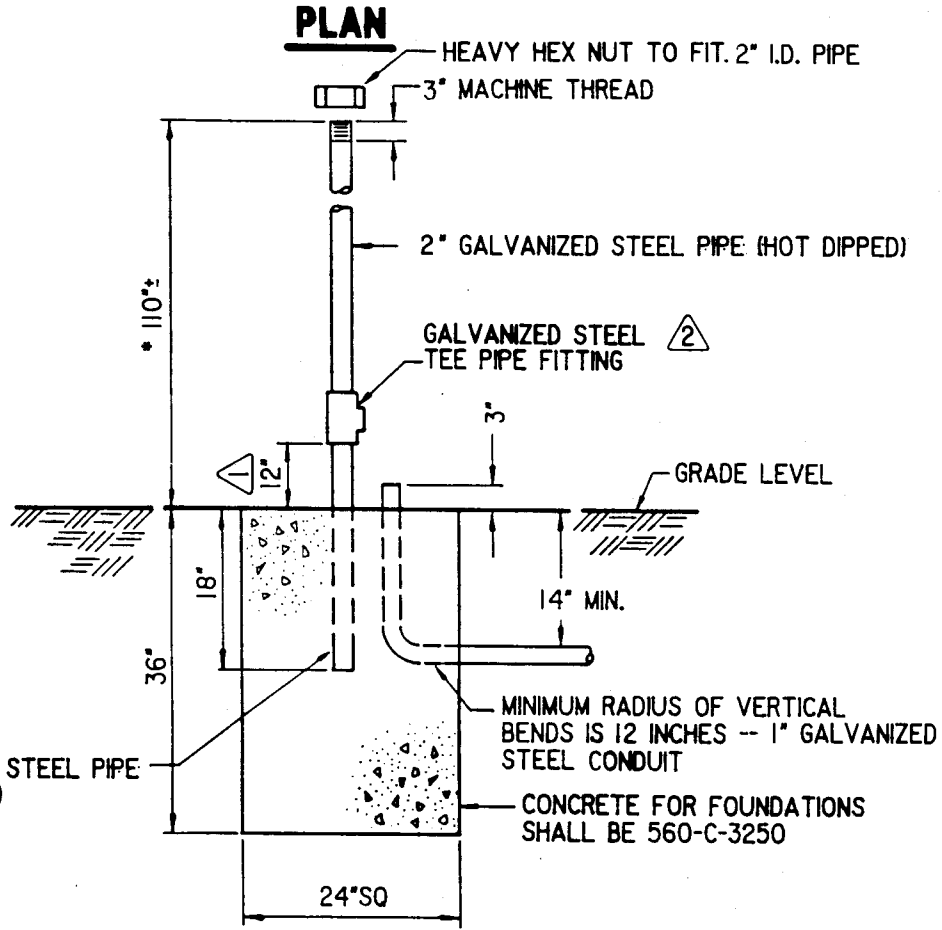


| | | | | | | | |
|---------|-----|------------------------|-------|------|----|----------|-------|
| DATE | BY | REVISION | APVD. | DATE | BY | REVISION | APVD. |
| 7/27/90 | SLW | CHANGED FROM 6" TO 12" | WJS | | | | |
| 7/27/90 | SLW | ADDED GALVANIZED STEEL | WJS | | | | |



PLAN



ELEVATION

* APPROX. DIMENSION ONLY. EXACT LENGTH TO BE MEASURED FOR EACH STREET LIGHT STANDARD.

CITY OF PASADENA - PUBLIC WORKS AND TRANSPORTATION DEPARTMENT

| |
|-------------------------------|
| DRAWN BY: B. CHAU |
| CHECKED BY: S. WRIGHT |
| SUBMITTED BY: J. E. V. |
| DATE: JANUARY 18, 1990 |

| | |
|--|---------|
| STAND PIPE FOUNDATION DETAIL for CAST IRON POST-TOP STREET LIGHTS | |
| APPROVED BY: <i>David E. Bumbart</i> | 1/30/90 |
| CITY ENGINEER / TRANSPORTATION MANAGER | DATE |

| |
|--------------------------|
| SCALE: NONE |
| DRAWING NO. S-981 |
| SHT. 1 OF 1 |