



PASADENA POLICE DEPARTMENT

PRELIMINARY - Monthly Statistical Report

February 2014

This Preliminary Monthly Statistical Report is based on Call for Service (CFS) data and is not Uniform Crime Report (UCR) compliant. Select call types are included for incidents closed with a report disposition. Using preliminary information allows for timely information to make immediate deployment decisions.

Offense	Service Area					
	1	2	3	4	5	
Homicide		2				2
Rape		1	2		2	5
Robbery	1	2	5	2	1	11
ADW	2	2	1	1	3	9
Assault	2	7	6	2	11	28
Assault DV	2	8	5	2	2	19
Burglary Commercial	4	4	2	11	7	28
Burglary Other		1	6	1	4	12
Burglary Residential	2	16	19	7		44
Burglary Vehicle	4	10	5	4	7	30
Theft	30	18	20	16	31	115
<i>Recovered Vehicle</i>	1	6	1	4	2	14
Stolen Vehicle	6	8	5	3	2	24
	53	79	76	49	70	327

Offense	Council Districts							
	1	2	3	4	5	6	7	
Homicide	2							2
Rape		2	1		2			5
Robbery	2	3	1	2	2		1	11
ADW	2			1		4	2	9
Assault	4	3	5	2	5	7	2	28
Assault DV	6	3	2	2	3	2	1	19
Burglary Commercial		2	4	11	3	5	3	28
Burglary Other		3	2	1	2	1	3	12
Burglary Residential	6	13	5	10	7	1	2	44
Burglary Vehicle	1	3	7	4	6	6	3	30
Theft	5	12	22	18	10	31	17	115
<i>Recovered Vehicle</i>	4		3	4	1	1	1	14
Stolen Vehicle	4	1	5	3	2	6	3	24
	32	45	54	54	42	63	37	327

**Totals do not include recovered vehicles

INFORMATION IS TIME SENSITIVE AND SUBJECT TO CHANGE UPON FURTHER ANALYSIS

FOR PUBLIC DISTRIBUTION

PASADENA POLICE DEPARTMENT

Combined Service Areas and Council District - February 2014																						
Council District	West			Northwest				Central				East		Midtown								
	1	6	7	1	3	5	2	4	5	7	4	1	3	5	6	7						
Homicide				2		2													2			
Rape					1	1	2			2			1	1				2	5			
Robbery	1			1	1	1	2	3		1	1	5	2	2				1	11			
ADW		2		2	2		2			1	1	1	1				2	1	9			
Assault		2		2	4	1	2	7	3		2	1	6	2	2		4	1	28			
Assault DV		1	1	2	6	1	1	8	3		2		5	2	2		1		19			
Burglary Commercial		3	1	4		1	3	4	2				2	11	11		3	2	28			
Burglary Other					1		1	3		2	1	6	1	1		1	1	2	12			
Burglary Residential		1	1	2	6	5	5	16	13	3	2	1	19	7	7				44			
Burglary Vehicle		2	2	4	1	5	4	10	3		2		5	4	4		2	4	30			
Theft		27	3	30	5	7	6	18	12	2	1	5	20	16	16		15	3	115			
Recovered Vehicle		1		1	4	1	1	6				1	1	4	4		2		14			
Stolen Vehicle		6		6	4	4		8	1		2	2	5	3	3		1		24			
TOTALS	1	44	8	53	31	25	23	79	45	5	14	12	76	49	49	0	29	5	19	17	70	327

Combined Service Areas and Council District - 2014 Year to Date February																						
Offense	West			Northwest				Central				East		Midtown								
	1	6	7	1	3	5	2	4	5	7	4	1	3	5	6	7						
Homicide				2		2													2			
Rape					1	1	3				3					1	1		6			
Robbery	1	1	1	3	1	4	2	7	4		1	1	6	5	5		3	2	26			
ADW		2	1	3	7	1	3	11			1	1	1	1				3	20			
Assault	1	4		5	7	2	6	15	4		2	1	7	4	4		10	1	53			
Assault DV		1	2	3	6	4	3	13	4		2		6	2	2		2	1	29			
Burglary Commercial		9	1	10		5	4	9	7			2	9	23	23		1	12	70			
Burglary Other		2		2	1	1		2	4		2	1	7	2	2		1	2	19			
Burglary Residential	1	3	1	5	12	9	9	30	17	4	3	4	28	14	14				77			
Burglary Vehicle	5	7	6	18	2	11	5	18	4		3	2	9	13	13		6	5	72			
Theft	3	44	21	68	10	20	11	41	27	5	5	15	52	41	41		33	6	276			
Recovered Vehicle		3	1	4	7	1	1	9				1	1	5	5		2		21			
Stolen Vehicle		10		10	5	4	1	10	3		4	4	11	6	6		1	1	42			
TOTALS	11	83	33	127	53	61	45	159	77	9	22	31	139	111	111	1	69	10	43	33	156	692

** Totals do not include Recovered Vehicles

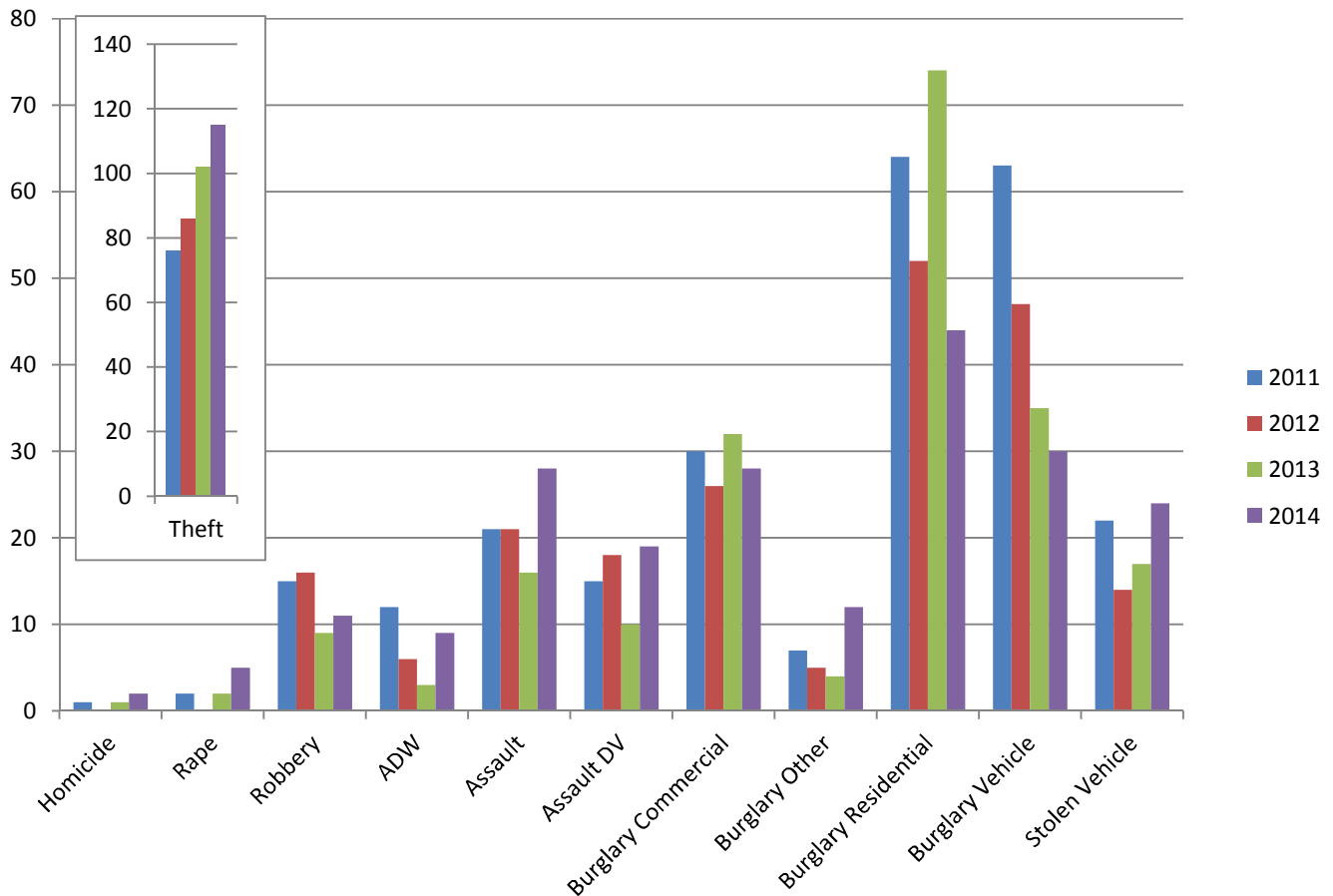
INFORMATION IS TIME SENSITIVE AND SUBJECT TO CHANGE UPON FURTHER ANALYSIS

FOR PUBLIC DISTRIBUTION

PASADENA POLICE DEPARTMENT

Feb 2011 - Feb 2014

	2011	2012	2013	2014	Change from 2013
Homicide	1		1	2	100%
Rape	2		2	5	150%
Robbery	15	16	9	11	22%
ADW	12	6	3	9	200%
Assault	21	21	16	28	75%
Assault DV	15	18	10	19	90%
Burglary Commercial	30	26	32	28	-13%
Burglary Other	7	5	4	12	200%
Burglary Residential	64	52	74	44	-41%
Burglary Vehicle	63	47	35	30	-14%
Theft	76	86	102	115	13%
<i>Recovered Vehicle</i>	8	4	5	14	180%
Stolen Vehicle	22	14	17	24	41%
	328	291	305	327	7%

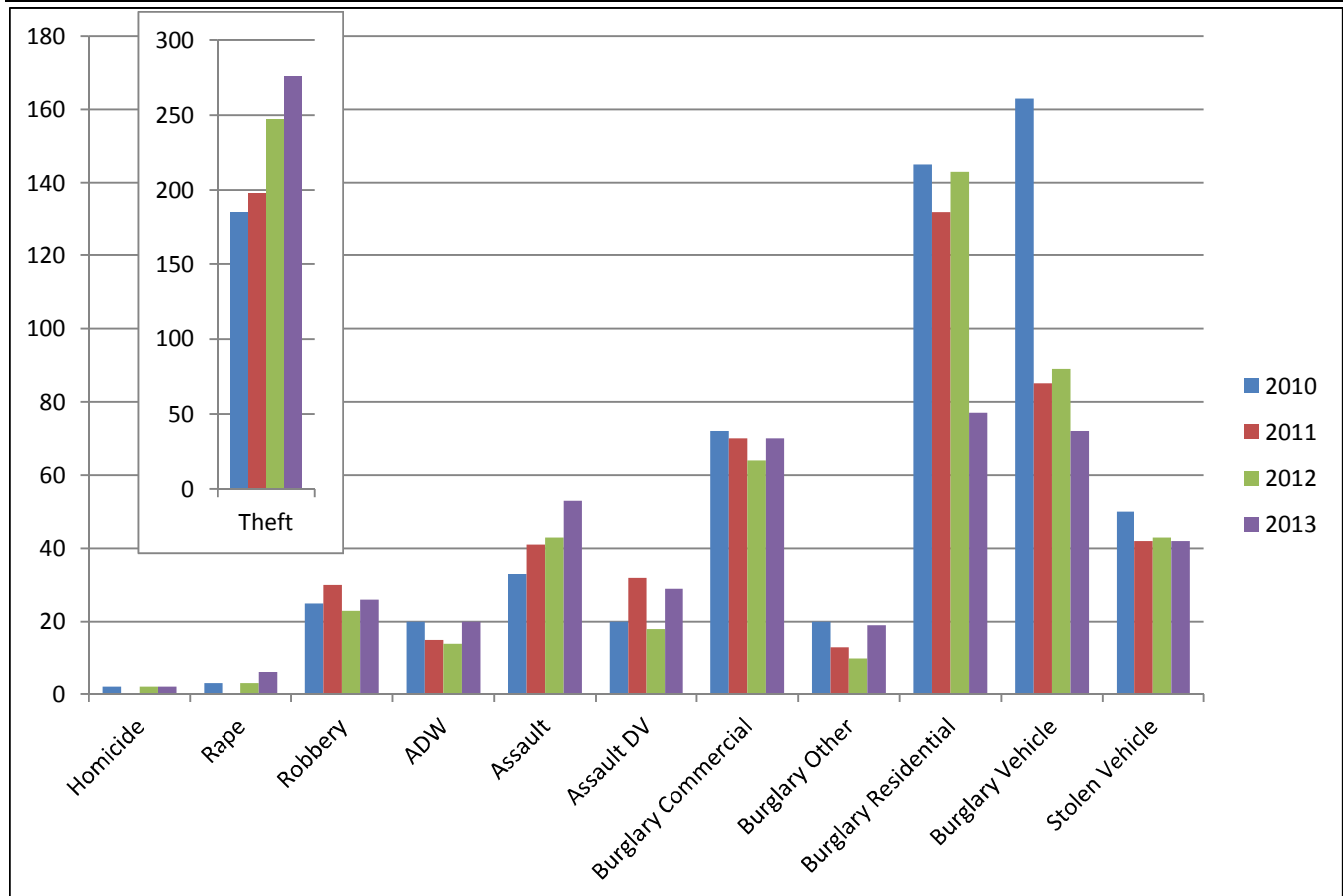


**INFORMATION IS TIME SENSITIVE AND SUBJECT TO CHANGE UPON FURTHER ANALYSIS
FOR PUBLIC DISTRIBUTION**

PASADENA POLICE DEPARTMENT

Year to Date through February

	2011	2012	2013	2014	Change from 2013
Homicide	2		2	2	0%
Rape	3		3	6	100%
Robbery	25	30	23	26	13%
ADW	20	15	14	20	43%
Assault	33	41	43	53	23%
Assault DV	20	32	18	29	61%
Burglary Commercial	72	70	64	70	9%
Burglary Other	20	13	10	19	90%
Burglary Residential	145	132	143	77	-46%
Burglary Vehicle	163	85	89	72	-19%
Theft	185	198	247	276	12%
<i>Recovered Vehicles</i>	<i>14</i>	<i>23</i>	<i>7</i>	<i>21</i>	<i>200%</i>
Stolen Vehicle	50	42	43	42	-2%
Total	738	658	699	692	-1%



INFORMATION IS TIME SENSITIVE AND SUBJECT TO CHANGE UPON FURTHER ANALYSIS

FOR PUBLIC DISTRIBUTION