



# PASADENA POLICE DEPARTMENT

## PRELIMINARY - Monthly Statistical Report

### March 2014

This Preliminary Monthly Statistical Report is based on Call for Service (CFS) data and is not Uniform Crime Report (UCR) compliant. Select call types are included for incidents closed with a report disposition. Using preliminary information allows for timely information to make immediate deployment decisions.

Offense	Service Area					
	1	2	3	4	5	
Homicide						
Rape	2				1	3
Robbery	1	3		1	1	6
ADW	3	8			1	12
Assault	1	2	2	3	8	16
Assault DV		7		2		9
Burglary Commercial	10	3	5	8	13	39
Burglary Other			1	3	4	8
Burglary Residential	10	10	14	4	3	41
Burglary Vehicle	16	2	9	5	8	40
Theft	38	27	21	23	49	158
<i>Recovered Vehicle</i>	1	2		1		4
Stolen Vehicle	3	6	1	2	3	15
	<b>84</b>	<b>68</b>	<b>53</b>	<b>51</b>	<b>91</b>	<b>347</b>

Offense	Council Districts							
	1	2	3	4	5	6	7	
Homicide								
Rape	1		1			1		3
Robbery			2	1	2	1		6
ADW	3		3		2	4		12
Assault	1	1	3	3	2	4	2	16
Assault DV	5		2	2				9
Burglary Commercial	2	4	12	9	2	9	1	39
Burglary Other		1	2	3		2		8
Burglary Residential	4	10	3	5	5	8	6	41
Burglary Vehicle	3	4	4	7	3	12	7	40
Theft	11	9	29	24	17	37	31	158
<i>Recovered Vehicle</i>			1	1	1	1		4
Stolen Vehicle	2		2	2	4	3	2	15
	<b>32</b>	<b>29</b>	<b>63</b>	<b>56</b>	<b>37</b>	<b>81</b>	<b>49</b>	<b>347</b>

\*\*Totals do not include recovered vehicles

**INFORMATION IS TIME SENSITIVE AND SUBJECT TO CHANGE UPON FURTHER ANALYSIS**

**FOR PUBLIC DISTRIBUTION**

# PASADENA POLICE DEPARTMENT

Combined Service Areas and Council District - March 2014																			
Council District	West			Northwest				Central				East	Midtown						
	1	6	7	1	3	5	2	4	5	7	4	1	3	5	6	7			
Rape																			
Rape	1	1		2										1				1	3
Robbery		1	1		1	2	3					1	1	1				1	6
ADW		3	3	3	3	2	8									1		1	12
Assault		1	1	1	1		2	1			1	2	3	3	2	2	3	1	8
Assault DV					5	2	7							2	2				9
Burglary Commercial	1	8	1	10	1	1	1	3	4	1			5	8	8	11	1	1	13
Burglary Other									1				1	3	3	2		2	4
Burglary Residential		7	3	10	4	3	3	10	10	1	1	2	14	4	4		1	1	1
Burglary Vehicle	2	11	3	16	1	1		2	4	2	1	2	9	5	5	3	2	1	2
Theft	1	28	9	38	10	6	11	27	9	1	1	10	21	23	23	23	5	9	12
Recovered Vehicle		1		1		1	1	2						1	1				4
Stolen Vehicle	1	1	1	3	1	1	4	6				1	1	2	2	1		2	3
	<b>6</b>	<b>61</b>	<b>17</b>	<b>84</b>	<b>26</b>	<b>19</b>	<b>23</b>	<b>68</b>	<b>29</b>	<b>5</b>	<b>3</b>	<b>16</b>	<b>53</b>	<b>51</b>	<b>51</b>	<b>0</b>	<b>44</b>	<b>11</b>	<b>20</b>
																			<b>91</b>
																			<b>347</b>

Combined Service Areas and Council District - 2014 Year to Date March																			
Offense	West			Northwest				Central				East	Midtown						
	1	6	7	1	3	5	2	4	5	7	4	1	3	5	6	7			
Homicide					2			2											2
Rape	1	1		2			1	1	3				3			2	1		3
Robbery	1	2	1	4	1	5	4	10	4		1	1	6	6	6	4		2	6
ADW		5	1	6	10	4	5	19				1	1	1	1			4	5
Assault	1	5		6	8	3	6	17	5		2	2	9	7	7	12	3	12	30
Assault DV		1	2	3	11	6	3	20	4		2		6	4	4	2	1	2	5
Burglary Commercial	1	17	2	20	1	6	5	12	11	1		2	14	31	31	1	23	1	4
Burglary Other		2		2	1	1		2	5		2	1	8	5	5	3		4	3
Burglary Residential	1	10	4	15	16	12	12	40	27	5	4	6	42	18	18		1	1	1
Burglary Vehicle	7	18	9	34	3	12	5	20	8	2	4	4	18	18	18	9	2	6	5
Theft	4	72	30	106	20	26	22	68	36	6	6	25	73	64	64	56	11	25	31
Recovered Vehicle		4	1	5	7	2	2	11				1	1	6	6	2			2
Stolen Vehicle	1	11	1	13	6	5	5	16	3		4	5	12	8	8	2	1	3	2
	<b>17</b>	<b>144</b>	<b>50</b>	<b>211</b>	<b>79</b>	<b>80</b>	<b>68</b>	<b>227</b>	<b>106</b>	<b>14</b>	<b>25</b>	<b>47</b>	<b>192</b>	<b>162</b>	<b>162</b>	<b>1</b>	<b>113</b>	<b>21</b>	<b>63</b>
																			<b>247</b>
																			<b>1039</b>

\*\* Totals do not include Recovered Vehicles

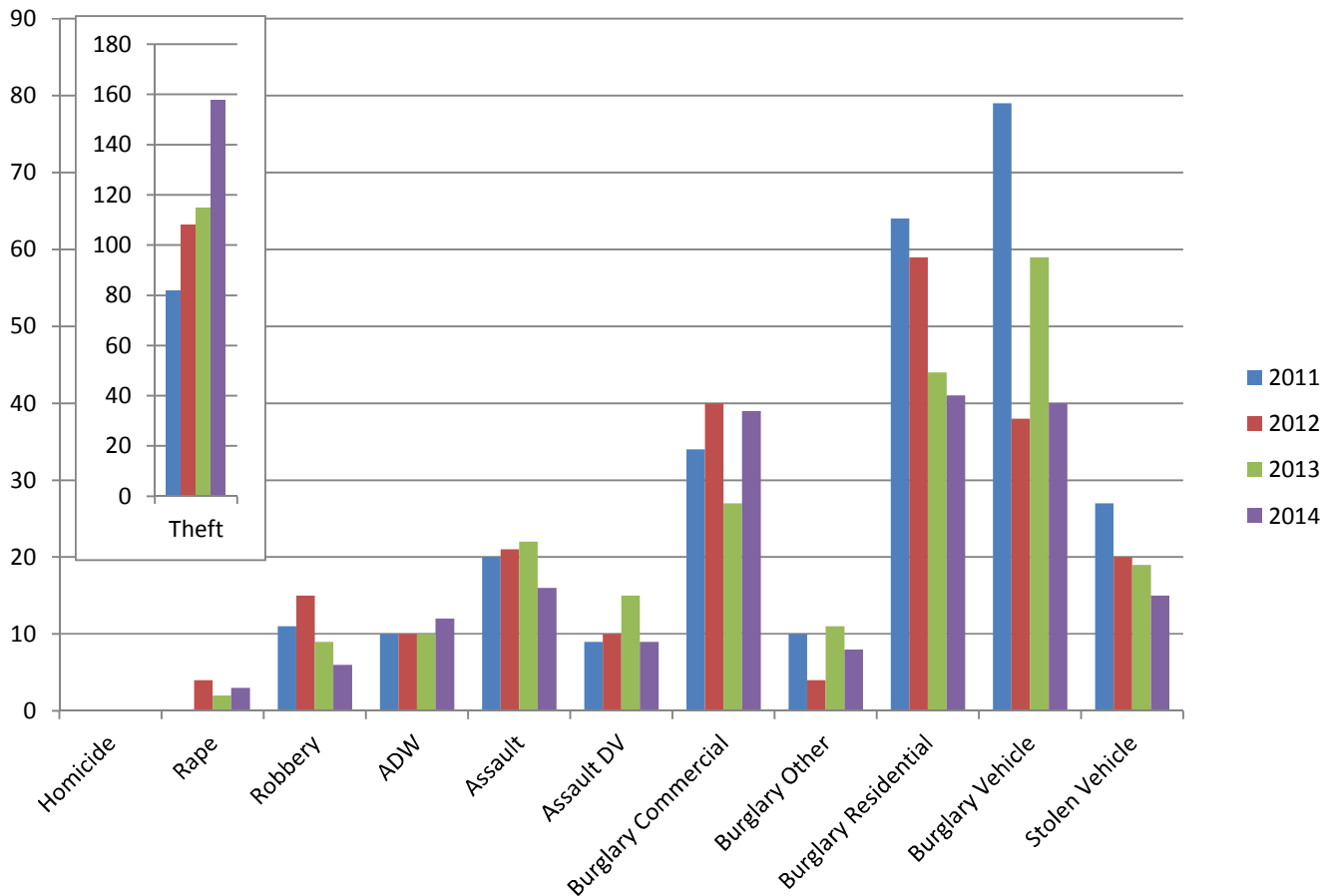
**INFORMATION IS TIME SENSITIVE AND SUBJECT TO CHANGE UPON FURTHER ANALYSIS**

**FOR PUBLIC DISTRIBUTION**

# PASADENA POLICE DEPARTMENT

## Mar 2011 - Mar 2014

	2011	2012	2013	2014	Change from 2013
<b>Homicide</b>					N/C
<b>Rape</b>		4	2	3	50%
<b>Robbery</b>	11	15	9	6	-33%
<b>ADW</b>	10	10	10	12	20%
<b>Assault</b>	20	21	22	16	-27%
<b>Assault DV</b>	9	10	15	9	-40%
<b>Burglary Commercial</b>	34	40	27	39	44%
<b>Burglary Other</b>	10	4	11	8	-27%
<b>Burglary Residential</b>	64	59	44	41	-7%
<b>Burglary Vehicle</b>	79	38	59	40	-32%
<b>Theft</b>	82	108	115	158	37%
<i>Recovered Vehicle</i>	8	9	7	4	-43%
<b>Stolen Vehicle</b>	27	20	19	15	-21%
	<b>346</b>	<b>329</b>	<b>333</b>	<b>347</b>	<b>4%</b>

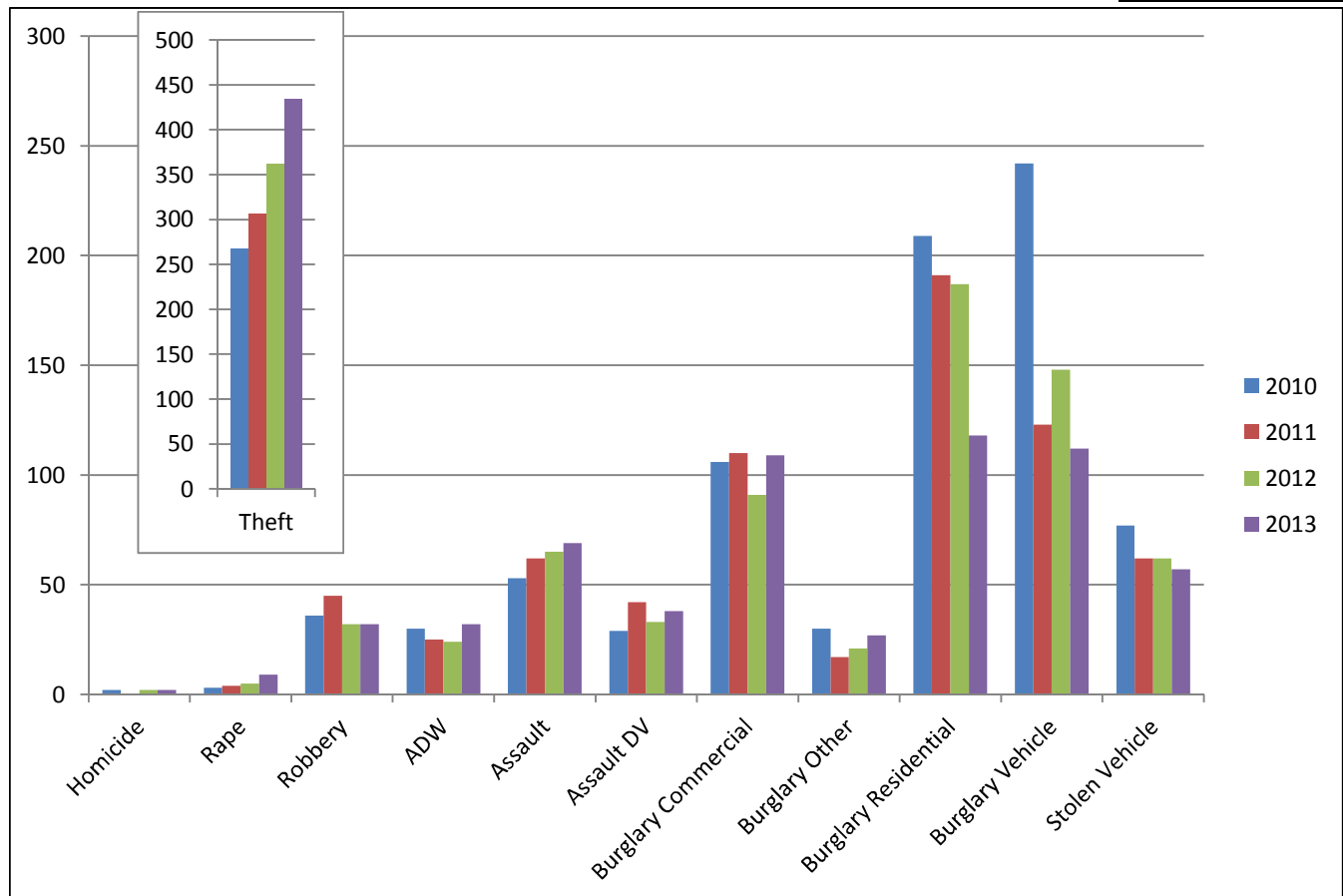


**INFORMATION IS TIME SENSITIVE AND SUBJECT TO CHANGE UPON FURTHER ANALYSIS  
FOR PUBLIC DISTRIBUTION**

# PASADENA POLICE DEPARTMENT

## Year to Date through March

	2011	2012	2013	2014	Change from 2013
Homicide	2		2	2	0%
Rape	3	4	5	9	80%
Robbery	36	45	32	32	0%
ADW	30	25	24	32	33%
Assault	53	62	65	69	6%
Assault DV	29	42	33	38	15%
Burglary Commercial	106	110	91	109	20%
Burglary Other	30	17	21	27	29%
Burglary Residential	209	191	187	118	-37%
Burglary Vehicle	242	123	148	112	-24%
Theft	267	306	362	434	20%
<i>Recovered Vehicles</i>	22	32	14	25	79%
Stolen Vehicle	77	62	62	57	-8%
<b>Total</b>	<b>1084</b>	<b>987</b>	<b>1032</b>	<b>1039</b>	<b>1%</b>



INFORMATION IS TIME SENSITIVE AND SUBJECT TO CHANGE UPON FURTHER ANALYSIS

FOR PUBLIC DISTRIBUTION