



PASADENA POLICE DEPARTMENT

PRELIMINARY - Monthly Statistical Report

April 2014

This Preliminary Monthly Statistical Report is based on Call for Service (CFS) data and is not Uniform Crime Report (UCR) compliant. Select call types are included for incidents closed with a report disposition. Using preliminary information allows for timely information to make immediate deployment decisions.

Offense	Service Area					
	1	2	3	4	5	
Homicide	1					1
Rape	1	1				2
Robbery	1	3	1	2	2	9
ADW	1	5		2	2	10
Assault	2	9	2	1	3	17
Assault DV	2	13	3	3	3	24
Burglary Commercial	7	5	12	9	12	45
Burglary Other	4	2		1	3	10
Burglary Residential	5	7	13	5	3	33
Burglary Vehicle	14	9	12	6	14	55
Theft	39	26	40	15	52	172
<i>Recovered Vehicle</i>	<i>1</i>	<i>2</i>	<i>1</i>			<i>4</i>
Stolen Vehicle	4	2	3		3	12
	81	82	86	44	97	390

Offense	Council Districts							
	1	2	3	4	5	6	7	
Homicide						1		1
Rape					1	1		2
Robbery			1	2	3	1	2	9
ADW	2		3	2	2	1		10
Assault	2	1		1	7	3	3	17
Assault DV	6	3	7	3	2	3		24
Burglary Commercial		8	8	9	4	9	7	45
Burglary Other	3			1		6		10
Burglary Residential	2	4	4	8	4	6	5	33
Burglary Vehicle	6	6	10	7	5	13	8	55
Theft	9	19	30	22	17	48	27	172
<i>Recovered Vehicle</i>			<i>2</i>	<i>1</i>			<i>1</i>	<i>4</i>
Stolen Vehicle	1	1	1		5	3	1	12
	31	42	64	55	50	95	53	390

**Totals do not include recovered vehicles

INFORMATION IS TIME SENSITIVE AND SUBJECT TO CHANGE UPON FURTHER ANALYSIS

FOR PUBLIC DISTRIBUTION

PASADENA POLICE DEPARTMENT

Combined Service Areas and Council District - April 2014																							
Council District	West			Northwest				Central				East		Midtown									
	1	6	7	1	3	5	2	4	5	7	4	1	3	5	6	7							
Homicide		1		1															1				
Rape		1		1			1	1											2				
Robbery		1		1		1	2	3				1	1	2	2			1	1	2	9		
ADW		1		1	2	1	2	5						2	2			2		2	10		
Assault			2	2	2		7	9	1			1	2	1	1				3	3	17		
Assault DV		2		2	5	6	2	13	3				3	3	3	1	1		1	3	24		
Burglary Commercial		6	1	7		3	2	5	8			2	2	12	9	9		5		3	4	12	45
Burglary Other	1	3		4	2			2						1	1				3		3	10	
Burglary Residential		4	1	5	2	3	2	7	4	3	2	4	13	5	5			1		2		3	33
Burglary Vehicle	3	7	4	14	3	3	3	9	6	1	1	4	12	6	6			7	1	6		14	55
Theft		33	6	39	9	11	6	26	19	7	6	8	40	15	15			19	5	15	13	52	172
Recovered Vehicle			1	1		2		2		1			1										4
Stolen Vehicle	1	2	1	4			2	2	1		2		3					1	1	1		3	12
	5	61	15	81	25	28	29	82	42	11	13	20	86	44	44	1	36	8	34	18	97	390	

Combined Service Areas and Council District - 2014 Year to Date April																							
Offense	West			Northwest				Central				East		Midtown									
	1	6	7	1	3	5	2	4	5	7	4	1	3	5	6	7							
Homicide		1		1	2			2															3
Rape	1	2		3			2	2	3				3					2	1			3	11
Robbery	1	3	1	5	1	6	6	13	4		1	2	7	8	8			4	1	2	1	8	41
ADW		6	1	7	12	5	7	24				1	1	3	3			2		4	1	7	42
Assault	1	5	2	8	10	3	13	26	6		2	3	11	8	8			12	3	15	3	33	86
Assault DV		3	2	5	16	12	5	33	7		2		9	7	7	1	3	1	3			8	62
Burglary Commercial	1	23	3	27	1	9	7	17	19	1	2	4	26	40	40	1	28	1	7	7	7	44	154
Burglary Other	1	5		6	3	1		4	5		2	1	8	6	6			3		7	3	13	37
Burglary Residential	1	14	5	20	18	15	14	47	31	8	6	10	55	23	23			1	1	3	1	6	151
Burglary Vehicle	10	25	13	48	6	15	8	29	14	3	5	8	30	24	24			16	3	12	5	36	167
Theft	4	105	36	145	29	37	28	94	55	13	12	33	113	79	79			75	16	40	44	175	606
Recovered Vehicle		4	2	6	7	4	2	13		1		1	2	6	6			2				2	29
Stolen Vehicle	2	13	2	17	6	5	7	18	4		6	5	15	8	8			3	2	4	2	11	69
	22	205	65	292	104	108	97	309	148	25	38	67	278	206	206	2	149	29	97	67	344	1429	

** Totals do not include Recovered Vehicles

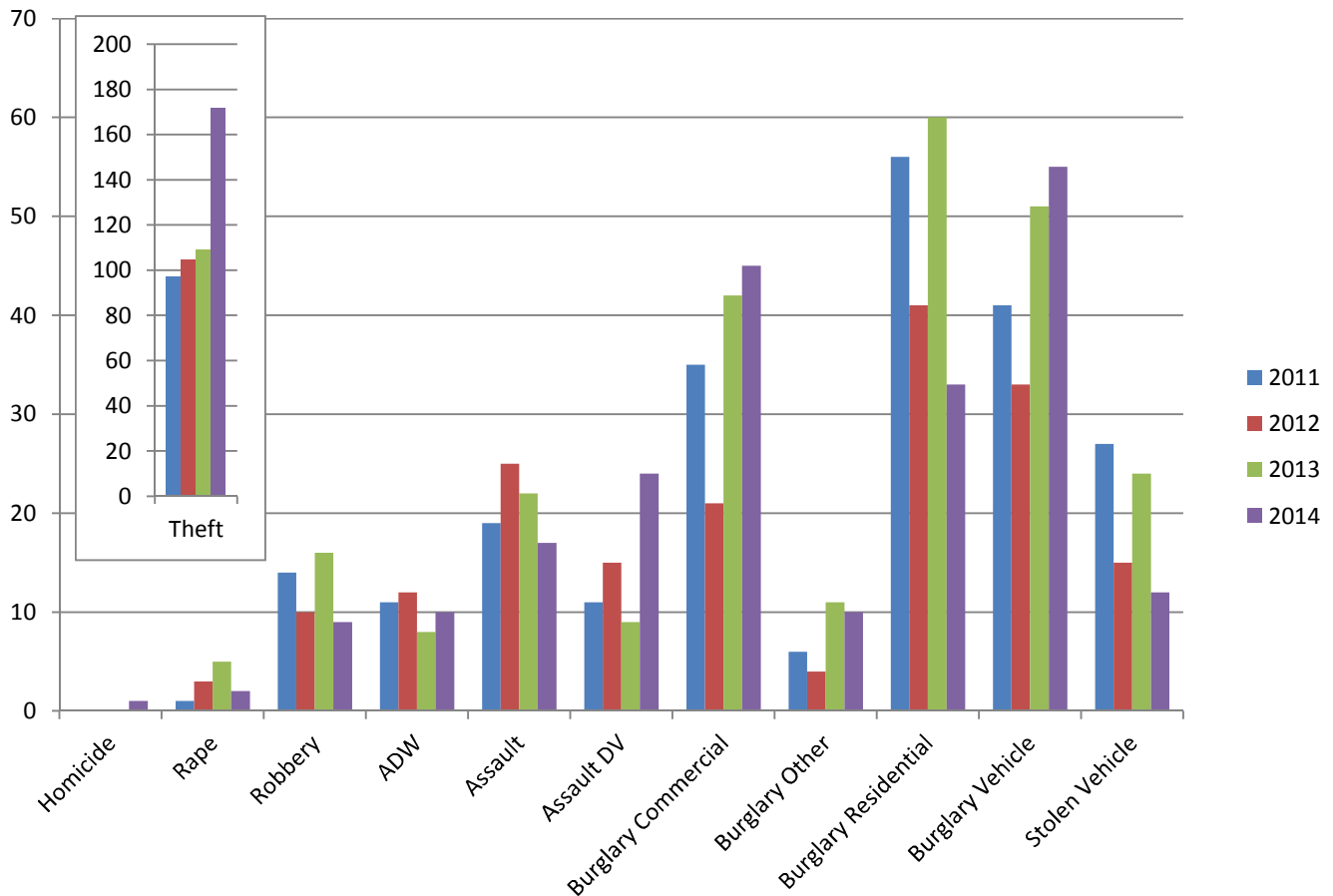
INFORMATION IS TIME SENSITIVE AND SUBJECT TO CHANGE UPON FURTHER ANALYSIS

FOR PUBLIC DISTRIBUTION

PASADENA POLICE DEPARTMENT

April 2011 - April 2014

	2011	2012	2013	2014	Change from 2013
Homicide				1	N/C
Rape	1	3	5	2	-60%
Robbery	14	10	16	9	-44%
ADW	11	12	8	10	25%
Assault	19	25	22	17	-23%
Assault DV	11	15	9	24	167%
Burglary Commercial	35	21	42	45	7%
Burglary Other	6	4	11	10	-9%
Burglary Residential	56	41	60	33	-45%
Burglary Vehicle	41	33	51	55	8%
Theft	97	105	109	172	58%
<i>Recovered Vehicle</i>	6	10	7	4	-43%
Stolen Vehicle	27	15	24	12	-50%
	318	284	357	390	9%

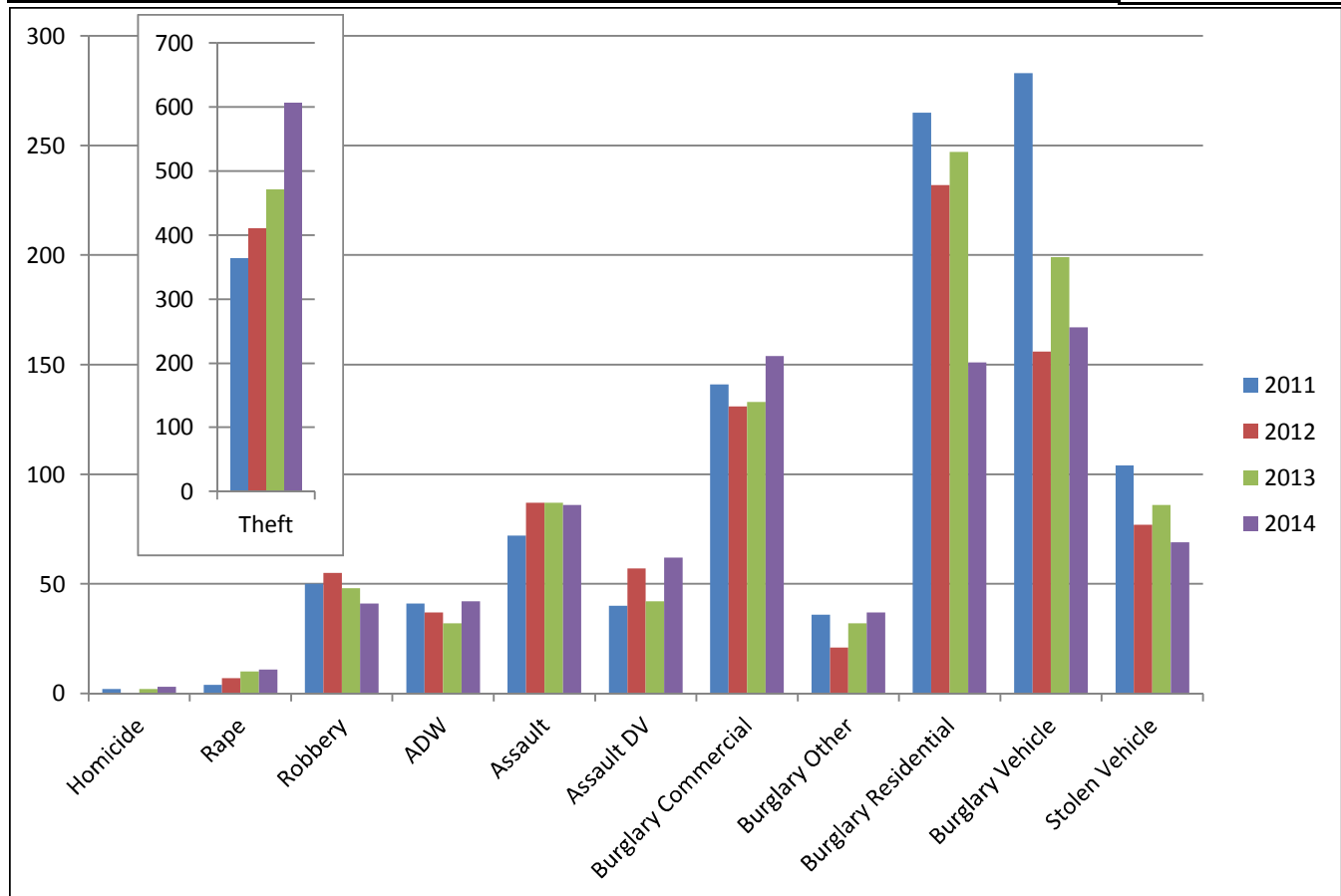


**INFORMATION IS TIME SENSITIVE AND SUBJECT TO CHANGE UPON FURTHER ANALYSIS
FOR PUBLIC DISTRIBUTION**

PASADENA POLICE DEPARTMENT

Year to Date through April

	2011	2012	2013	2014	Change from 2013
Homicide	2	7	2	3	50%
Rape	4	7	10	11	10%
Robbery	50	55	48	41	-15%
ADW	41	37	32	42	31%
Assault	72	87	87	86	-1%
Assault DV	40	57	42	62	48%
Burglary Commercial	141	131	133	154	16%
Burglary Other	36	21	32	37	16%
Burglary Residential	265	232	247	151	-39%
Burglary Vehicle	283	156	199	167	-16%
Theft	364	411	471	606	29%
<i>Recovered Vehicles</i>	<i>28</i>	<i>42</i>	<i>21</i>	<i>29</i>	<i>38%</i>
Stolen Vehicle	104	77	86	69	-20%
Total	1402	1271	1389	1429	3%



INFORMATION IS TIME SENSITIVE AND SUBJECT TO CHANGE UPON FURTHER ANALYSIS

FOR PUBLIC DISTRIBUTION