



PASADENA POLICE DEPARTMENT

PRELIMINARY - Monthly Statistical Report

June 2014

This Preliminary Monthly Statistical Report is based on Call for Service (CFS) data and is not Uniform Crime Report (UCR) compliant. Select call types are included for incidents closed with a report disposition. Using preliminary information allows for timely information to make immediate deployment decisions.

Offense	Service Areas					
	1	2	3	4	5	
Homicide						0
Rape		1			1	2
Robbery		1	1		1	3
ADW	2	8	1	1	3	15
Assault	1	6	4		5	16
Assault DV	1	4	2	1	3	11
Burglary Commercial	8	5	4	7	5	29
Burglary Other	2	1		1	1	5
Burglary Residential	3	7	11	7		28
Burglary Vehicle	10	6	4	3	16	39
Theft	22	21	17	19	32	111
<i>Recovered Vehicle</i>	<i>1</i>	<i>3</i>	<i>3</i>		<i>1</i>	<i>8</i>
Stolen Vehicle	4	8	8	1	7	28
	53	68	52	40	74	287

Offense	Council Districts							
	1	2	3	4	5	6	7	
Homicide								0
Rape	1		1					2
Robbery			1		1		1	3
ADW	8		3	1	2	1		15
Assault	2	3	5		3	2	1	16
Assault DV	1	1	3	1	3	2		11
Burglary Commercial		3	1	7	8	7	3	29
Burglary Other	1			1		2	1	5
Burglary Residential	2	4	2	10	5	2	3	28
Burglary Vehicle	3	3	13	3	3	6	8	39
Theft	7	9	24	22	10	24	15	111
<i>Recovered Vehicle</i>	<i>1</i>	<i>1</i>	<i>1</i>		<i>1</i>	<i>1</i>	<i>3</i>	<i>8</i>
Stolen Vehicle	5	3	7	1	8	1	3	28
	30	26	60	46	43	47	35	287

**Totals do not include recovered vehicles

INFORMATION IS TIME SENSITIVE AND SUBJECT TO CHANGE UPON FURTHER ANALYSIS

FOR PUBLIC DISTRIBUTION

PASADENA POLICE DEPARTMENT

Combined Service Areas and Council Districts - June 2014																				
Council District	West			Northwest				Central				East	Midtown							
	1	6	7	1	3	5	2	4	5	7	4	1	3	5	6	7				
Homicide																				0
Rape					1			1							1					1
Robbery					1			1			1		1						1	1
ADW	2			2	6	1	1	8			1		1	1	1		2		1	3
Assault	1			1	1	3	2	6	3		1		4			2		2	1	5
Assault DV		1		1	1	2	1	4	1		1		2	1	1		1	1	1	3
Burglary Commercial		7	1	8				5	5	3		1		4	7	7		1	2	5
Burglary Other		2		2	1			1						1	1				1	1
Burglary Residential		2	1	3	2	2	3	7	4	3	2	2	11	7	7					28
Burglary Vehicle	2	5	3	10	1	2	3	6	3			1	4	3	3		11		1	4
Theft	1	15	6	22	6	9	6	21	9	3	3	2	17	19	19		15	1	9	7
<i>Recovered Vehicle</i>		1		1	1	1	1	3	1			2	3						1	1
Stolen Vehicle	3	1		4	1	4	3	8	3		5		8	1	1	1	3			3
	9	33	11	53	20	24	24	68	26	6	15	5	52	40	40	1	36	4	14	19
																				74
																				287

Combined Service Areas and Council Districts - 2014 Year to Date June																				
Offense	West			Northwest				Central				East	Midtown							
	1	6	7	1	3	5	2	4	5	7	4	1	3	5	6	7				
Homicide		1		1	2			2												3
Rape	2	2		4	3			5	3				3				3	1		4
Robbery	1	3	2	6	1	7	8	16	5		2	2	9	10	10		5	1	2	3
ADW	2	7	1	10	22	7	10	39			1	1	2	7	7		5		7	1
Assault	2	10	2	14	15	7	17	39	11		3	3	17	9	9		17	4	19	5
Assault DV		4	2	6	19	17	8	44	11		5		16	8	8	1	4	2	5	12
Burglary Commercial	1	31	7	39	2	11	12	25	24	2	4	4	34	54	54	1	34	3	8	10
Burglary Other	1	8	6	15	5	1		6	5	1	2	3	11	9	9		4		7	4
Burglary Residential	1	22	7	30	25	21	18	64	39	11	9	14	73	33	33		1	1	4	3
Burglary Vehicle	12	34	17	63	9	20	16	45	23	3	5	10	41	32	32		30	4	17	15
Theft	12	136	46	194	41	53	50	144	84	20	21	40	165	119	119		102	18	56	63
<i>Recovered Vehicle</i>		6	2	8	11	6	4	21	2	1	2	3	8	7	7		2			1
Stolen Vehicle	6	18	2	26	9	11	13	33	10		14	7	31	11	11	1	8	3	7	6
	40	276	92	408	153	155	154	462	215	37	66	84	402	292	292	3	213	37	132	110
																				495
																				2059

** Totals do not include Recovered Vehicles

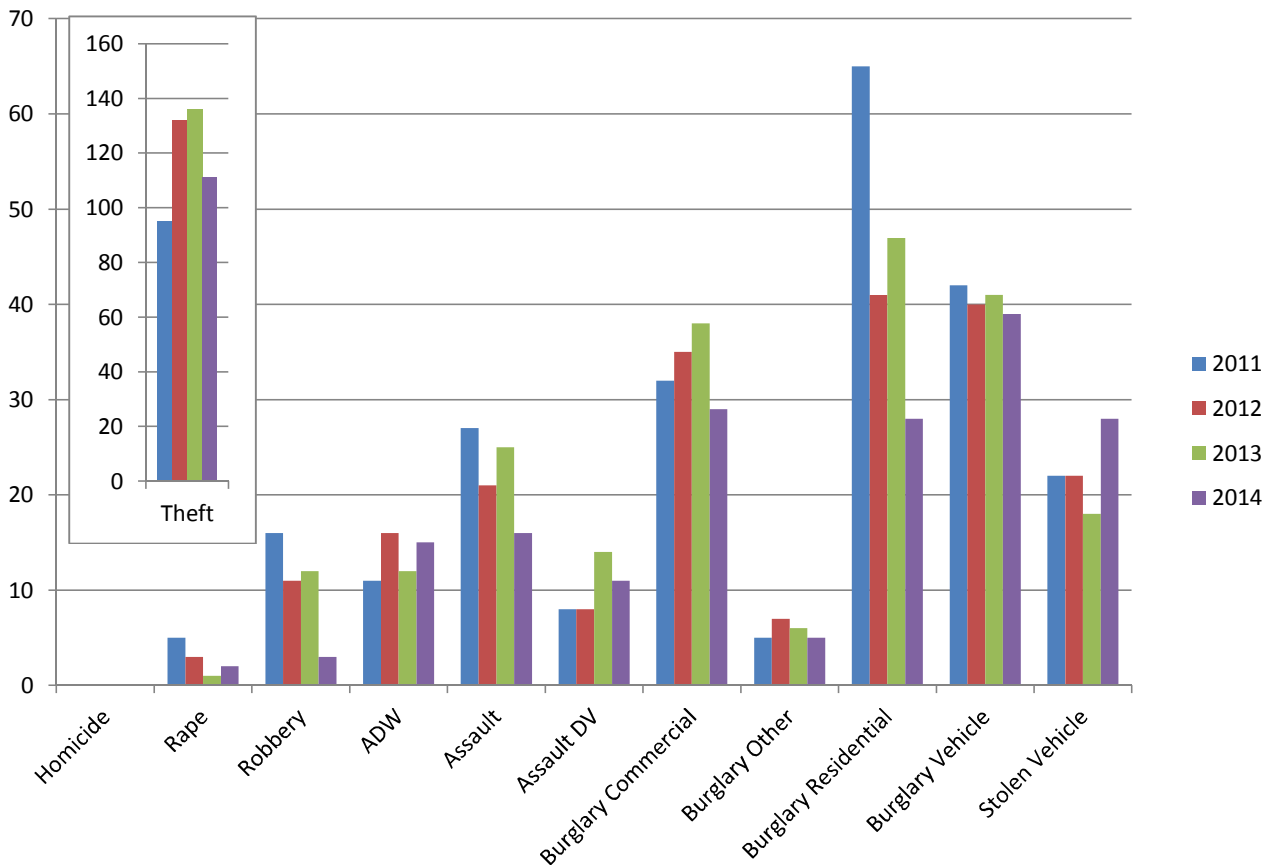
INFORMATION IS TIME SENSITIVE AND SUBJECT TO CHANGE UPON FURTHER ANALYSIS

FOR PUBLIC DISTRIBUTION

PASADENA POLICE DEPARTMENT

June 2011 - June 2014

	2011	2012	2013	2014	Change from 2013
Homicide					
Rape	5	3	1	2	100%
Robbery	16	11	12	3	-75%
ADW	11	16	12	15	25%
Assault	27	21	25	16	-36%
Assault DV	8	8	14	11	-21%
Burglary Commercial	32	35	38	29	-24%
Burglary Other	5	7	6	5	-17%
Burglary Residential	65	41	47	28	-40%
Burglary Vehicle	42	40	41	39	-5%
Theft	95	132	136	111	-18%
Recovered Vehicle	6	8	8	8	0%
Stolen Vehicle	22	22	18	28	56%
	328	336	350	287	-18%

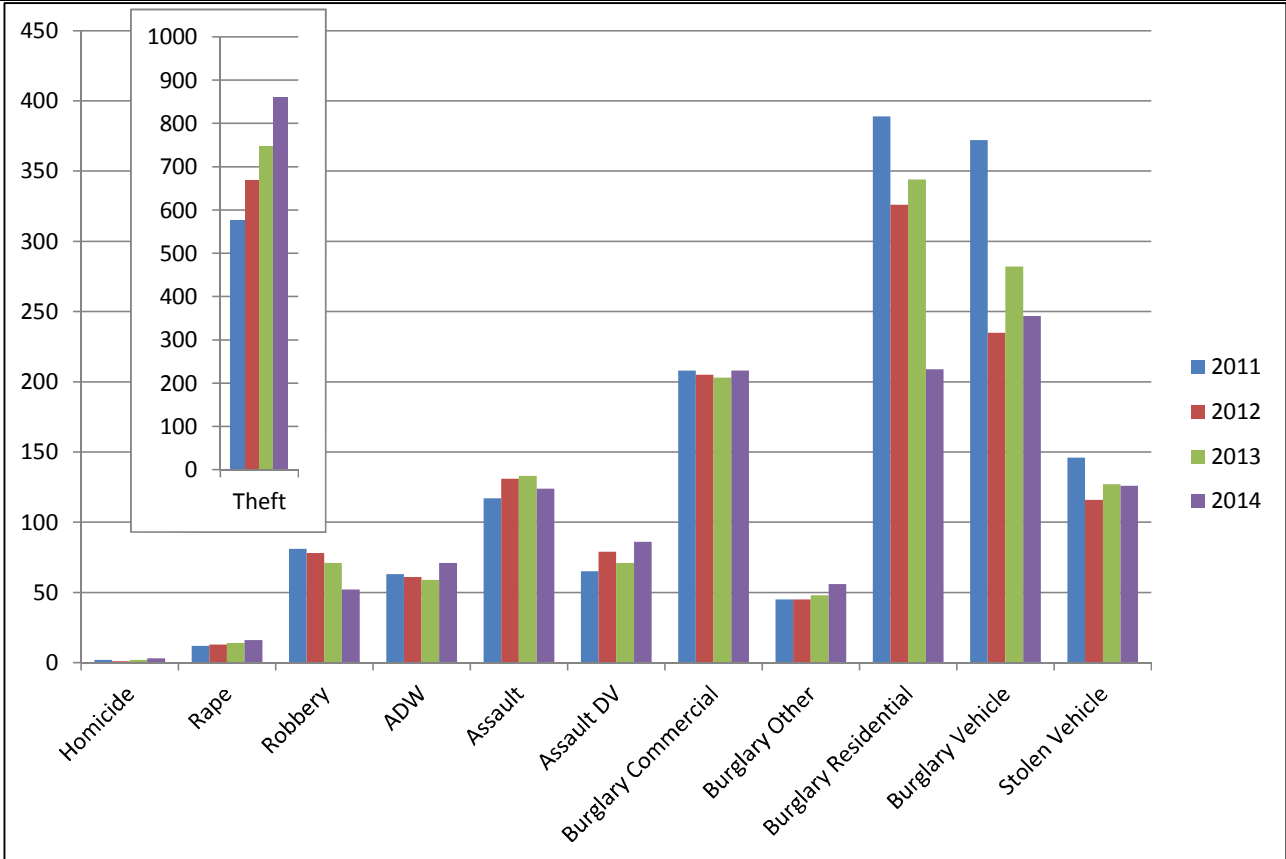


**INFORMATION IS TIME SENSITIVE AND SUBJECT TO CHANGE UPON FURTHER ANALYSIS
FOR PUBLIC DISTRIBUTION**

PASADENA POLICE DEPARTMENT

Year to Date through June

	2011	2012	2013	2014	Change from 2013
Homicide	2	1	2	3	50%
Rape	12	13	14	16	14%
Robbery	81	78	71	52	-27%
ADW	63	61	59	71	20%
Assault	117	131	133	124	-7%
Assault DV	65	79	71	86	21%
Burglary Commercial	208	205	203	208	2%
Burglary Other	45	45	48	56	17%
Burglary Residential	389	326	344	209	-39%
Burglary Vehicle	372	235	282	247	-12%
Theft	576	669	748	861	15%
Recovered Vehicles	40	54	36	47	31%
Stolen Vehicle	146	116	127	126	-1%
Total	2076	1959	2102	2059	-2%



**INFORMATION IS TIME SENSITIVE AND SUBJECT TO CHANGE UPON FURTHER ANALYSIS
FOR PUBLIC DISTRIBUTION**