



PASADENA POLICE DEPARTMENT

PRELIMINARY - Monthly Statistical Report

July 2014

This Preliminary Monthly Statistical Report is based on Call for Service (CFS) data and is not Uniform Crime Report (UCR) compliant. Select call types are included for incidents closed with a report disposition. Using preliminary information allows for timely information to make immediate deployment decisions.

Offense	Service Areas					
	1	2	3	4	5	
Homicide		3				3
Rape						0
Robbery		5		1	3	9
ADW		11			4	15
Assault	6	5	6	4	6	27
Assault DV	1	10	1	1		13
Burglary Commercial	10	1	6	5	20	42
Burglary Other	1	1			3	5
Burglary Residential	13	18	9	8	1	49
Burglary Vehicle	9	9	3	6	7	34
Theft	28	29	14	23	47	141
<i>Recovered Vehicle</i>	2	3	2			7
Stolen Vehicle	6	4	3	1	2	16
	74	96	42	49	93	354

Offense	Council Districts							
	1	2	3	4	5	6	7	
Homicide	3							3
Rape								0
Robbery	3		1	1	1	1	2	9
ADW	4		7		2	1	1	15
Assault	3	3	5	4	4	7	1	27
Assault DV	3	1	2	1	5		1	13
Burglary Commercial	1	5	10	5	1	12	8	42
Burglary Other	1					1	3	5
Burglary Residential	7	5	7	9	7	8	6	49
Burglary Vehicle	11	1	4	7		7	4	34
Theft	15	11	36	23	13	27	16	141
<i>Recovered Vehicle</i>	2			1	2	2		7
Stolen Vehicle	1	1	2	1	3	4	4	16
	52	27	74	51	36	68	46	354

**Totals do not include recovered vehicles

INFORMATION IS TIME SENSITIVE AND SUBJECT TO CHANGE UPON FURTHER ANALYSIS

FOR PUBLIC DISTRIBUTION

PASADENA POLICE DEPARTMENT

Combined Service Areas and Council Districts - July 2014																			
	West			Northwest				Central				East	Midtown						
Council District	1	6	7	1	3	5	2	4	5	7	4	1	3	5	6	7			
Homicide				3			3												3
Rape																			0
Robbery				3	1	1	5					1	1			1	2	3	9
ADW				4	5	2	11							2		1	1	4	15
Assault	1	5		6	2	2	1	5	3		2	1	6	4	4	3	1	2	27
Assault DV			1	1	3	2	5	10	1			1	1	1					13
Burglary Commercial		8	2	10	1			1	5			1	6	5	5	10	1	4	42
Burglary Other			1	1	1			1									1	2	5
Burglary Residential		8	5	13	7	7	4	18	5	1	2	1	9	8	8		1		49
Burglary Vehicle	3	5	1	9	8	1		9	1	1		1	3	6	6	3		2	34
Theft	4	18	6	28	11	6	12	29	11			3	14	23	23	30	1	9	141
<i>Recovered Vehicle</i>		2		2	2		1	3		1	1		2						7
Stolen Vehicle		4	2	6	1	1	2	4	1			2	3	1	1	1	1		16
	8	48	18	74	44	25	27	96	27	2	4	9	42	49	49	0	49	5	354

Combined Service Areas and Council Districts - 2014 Year to Date July																			
	West			Northwest				Central				East	Midtown						
Offense	3	6	7	1	3	5	2	4	5	7	4	1	3	5	6	7			
Homicide		1		1	5			5											6
Rape	2	2		4	3		2	5	3			3				3	1		16
Robbery	1	3	2	6	4	8	9	21	5		2	2	9	11	11	5	1	3	61
ADW	2	7	1	10	26	12	12	50			1	1	2	7	7	7		8	86
Assault	3	15	2	20	17	9	18	44	14		5	4	23	13	13	20	5	21	151
Assault DV		4	3	7	22	19	13	54	12		5		17	9	9	1	4	2	99
Burglary Commercial	1	39	9	49	3	11	12	26	29	2	4	5	40	59	59	1	44	4	250
Burglary Other	1	8	7	16	6	1		7	5	1	2	3	11	9	9	4		8	61
Burglary Residential	1	30	12	43	32	28	22	82	44	12	11	15	82	41	41	1	2	4	258
Burglary Vehicle	15	39	18	72	17	21	16	54	24	4	5	11	44	38	38	33	4	19	281
Theft	16	154	52	222	52	59	62	173	95	20	21	43	179	142	142	132	19	65	1002
<i>Recovered Vehicle</i>		8	2	10	13	6	5	24	2	2	3	3	10	7	7	2		1	54
Stolen Vehicle	6	22	4	32	10	12	15	37	11		14	9	34	12	12	1	9	4	142
	48	324	110	482	197	180	181	558	242	39	70	93	444	341	341	3	262	42	2413

** Totals do not include Recovered Vehicles

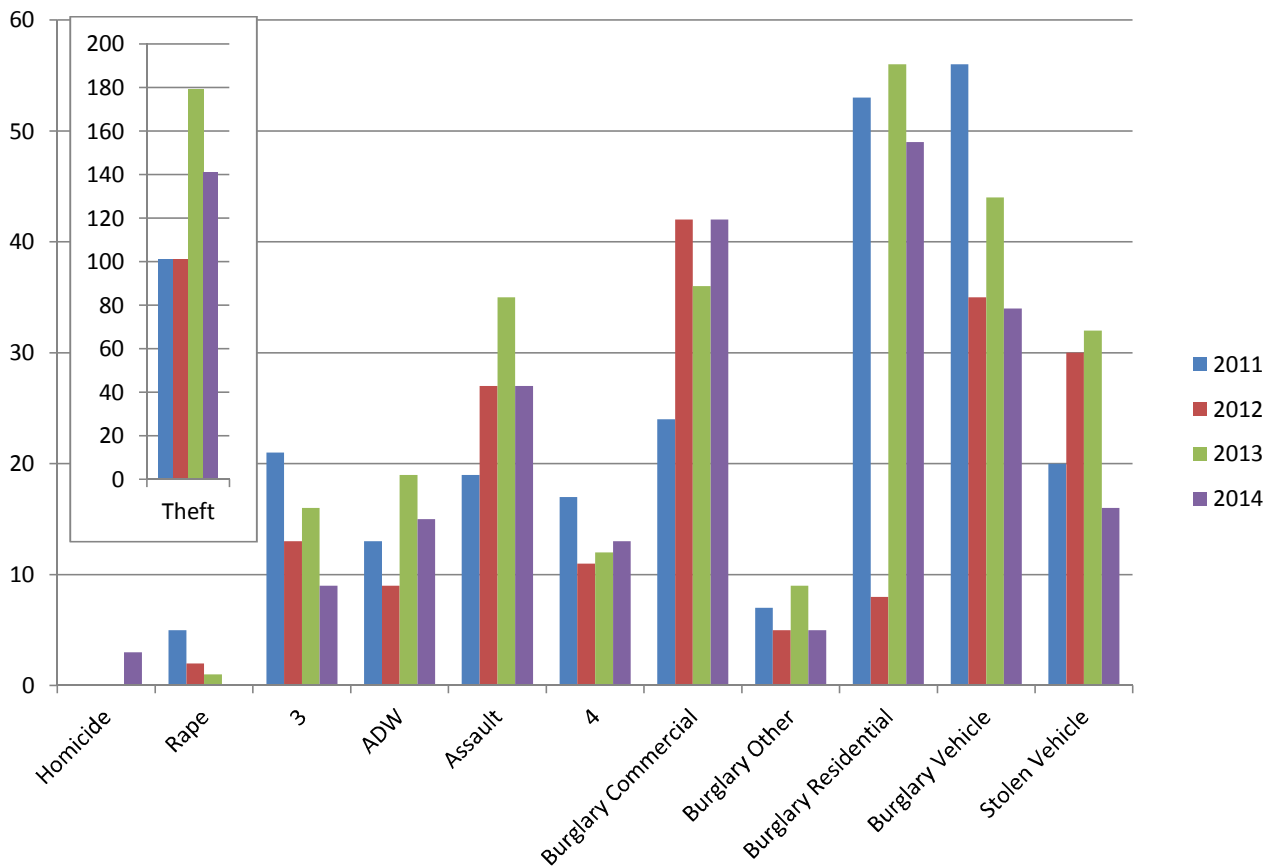
INFORMATION IS TIME SENSITIVE AND SUBJECT TO CHANGE UPON FURTHER ANALYSIS

FOR PUBLIC DISTRIBUTION

PASADENA POLICE DEPARTMENT

July 2011 - July 2014

	2011	2012	2013	2014	Change from 2013
Homicide	0	0	0	3	N/C
Rape	5	2	1	0	-100%
Robbery	21	13	16	9	-44%
ADW	13	9	19	15	-21%
Assault	19	27	35	27	-23%
Assault DV	17	11	12	13	8%
Burglary Commercial	24	42	36	42	17%
Burglary Other	7	5	9	5	-44%
Burglary Residential	53	45	56	49	-13%
Burglary Vehicle	56	35	44	34	-23%
Theft	101	101	179	141	-21%
Recovered Vehicle	6	5	13	7	-46%
Stolen Vehicle	20	30	32	16	-50%
	336	320	439	354	-19%

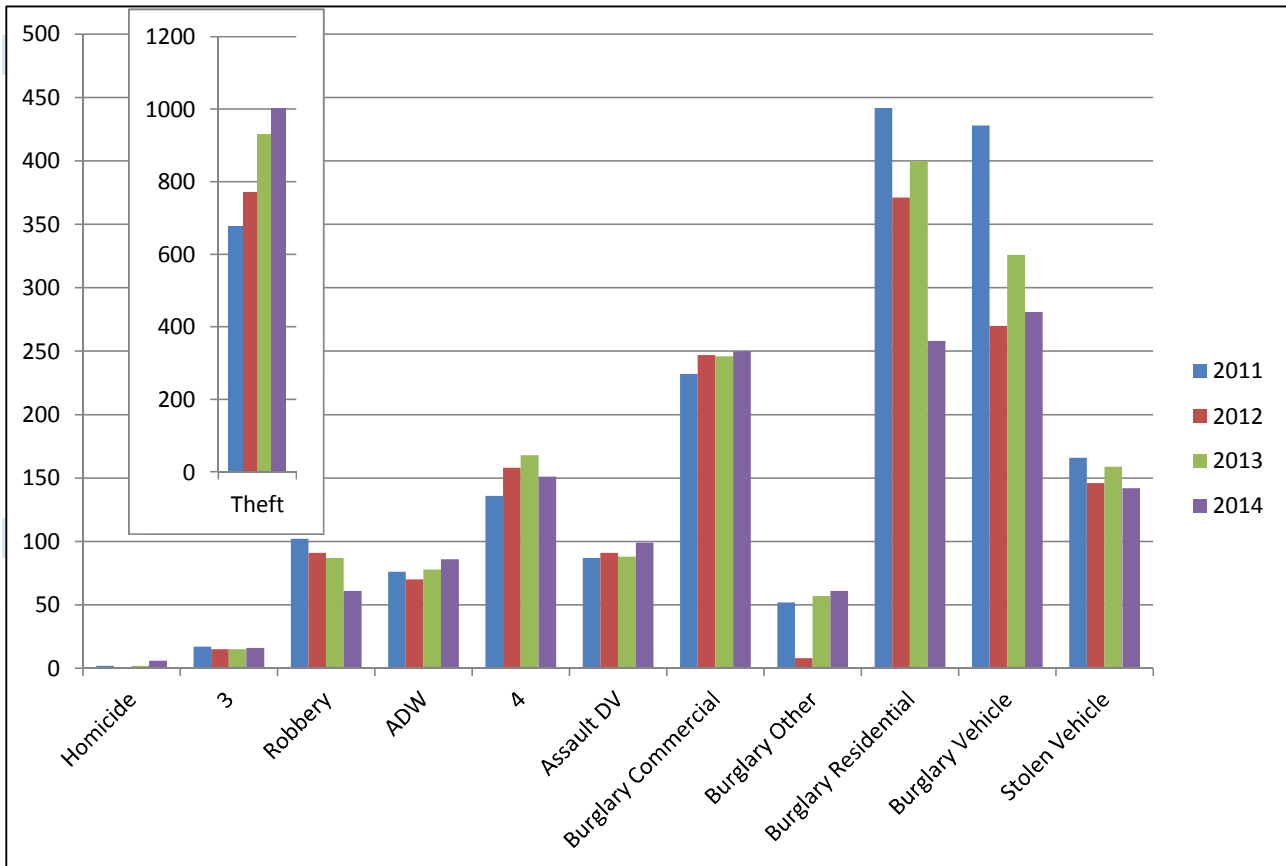


INFORMATION IS TIME SENSITIVE AND SUBJECT TO CHANGE UPON FURTHER ANALYSIS
FOR PUBLIC DISTRIBUTION

PASADENA POLICE DEPARTMENT

Year to Date through July

	2011	2012	2013	2014	Change from 2013
Homicide	2	1	2	6	200%
Rape	17	15	15	16	7%
Robbery	102	91	87	61	-30%
ADW	76	70	78	86	10%
Assault	136	158	168	151	-10%
Assault DV	87	91	88	99	13%
Burglary Commercial	232	247	246	250	2%
Burglary Other	52	50	57	61	7%
Burglary Residential	442	371	400	258	-36%
Burglary Vehicle	428	270	326	281	-14%
Theft	677	770	931	1002	8%
<i>Recovered Vehicles</i>	46	59	49	54	10%
Stolen Vehicle	166	146	159	142	-11%
Total	2417	2280	2557	2413	-6%



**INFORMATION IS TIME SENSITIVE AND SUBJECT TO CHANGE UPON FURTHER ANALYSIS
FOR PUBLIC DISTRIBUTION**